



NOTRE DAME

MEN'S SOCCER

FIGHTING IRISH MEDIA

Assistant Athletics Communications Director

Robby Hamman

rhamman@nd.edu

574-808-9575 (cell)

NOTRE DAME (8-6-2, 3-4-1 ACC)

CLEMSON (ACC FIRST ROUND)

GAME INFORMATION

| | | |
|----|------------------------------|---------------------------|
| | Wednesday, Nov. 2 at 8 PM ET | Riggs Field - Clemson, SC |
| TV | | Live Stats at UND.com |

THE SERIES

| | | |
|-------------------|-----------------|---|
| All-Time vs. CLEM | ND Leads, 6-4-2 | Last: D, 1-1 (Clem advanced on PKs 5-3 - Dec. 10, 2021) |
|-------------------|-----------------|---|

THE COACHES

| | Head Coach | At School (Years) | Overall (Years) |
|------|-------------|-------------------|-------------------|
| ND | Chad Riley | 51-35-11 (5th) | 102-61-25 (10th) |
| CLEM | Mike Noonan | 150-77-36 (13th) | 374-193-77 (34th) |

SCHEDULE/RESULTS

| Date | ND Rank | Opponent | TV | Time/Result |
|-------|---------|--------------------------|-------|-------------|
| 8/25 | #4 | SEATTLE | ACCNX | L, 1-3 |
| 8/29 | #4 | at Michigan State | B1G+ | W, 3-2 |
| 9/6 | #22 | DEPAUL | ACCNX | D, 1-1 |
| 9/10 | #22 | at #24 Syracuse \$ | ACCNX | L, 0-1 |
| 9/16 | | at Virginia \$ | ACCNX | W, 2-1 |
| 9/21 | | CHICAGO STATE | ACCNX | W, 4-0 |
| 9/24 | | UNC \$ | ACCNX | L, 0-1 |
| 9/27 | | KALAMAZOO | ACCNX | W, 8-0 |
| 9/30 | | BOSTON COLLEGE \$ | ACCN | W, 2-1 |
| 10/5 | | at Indiana | B1G+ | L, 0-1 |
| 10/8 | | #11 LOUISVILLE \$ | ACCNX | L, 0-2 |
| 10/14 | | at #3 Duke \$ | ACCN | L, 0-2 |
| 10/18 | | at UIC | ESPN+ | W, 4-2 |
| 10/21 | | VIRGINIA TECH \$ | ACCNX | W, 1-0 |
| 10/25 | | MICHIGAN | ACCN | W, 3-2 |
| 10/28 | | at #23 Pitt \$ | ACCNX | D, 1-1 |
| 11/2 | | at Clemson (ACC 1st Rd) | ACCN | 8 PM |

All times Eastern. Home games in **BOLD CAPS** played at Alumni Stadium in South Bend, Ind.

\$ - ACC Game

NOTRE DAME: BY THE NUMBERS

| | |
|-----|--|
| 102 | Career wins for McFarland Family Head Men's Soccer Coach Chad Riley. Fifty-one wins have come while coaching at Notre Dame while 51 came during his time at Dartmouth. Riley became the fifth Notre Dame men's soccer coach to reach the 100-career win mark. |
| 13 | Wins the Irish have recorded in ACC Tournament play since joining the league in 2013. Notre Dame has an overall record of 13-6-3 in the ACC Tournament. |
| 12 | Matches that have been played between the Irish and Tigers in the all-time series. Notre Dame holds a lead in the series with a mark of 6-4-2. The Irish went 1-0-1 last season, defeating Clemson in the regular season and technically ending in a draw in the College Cup semifinals, but the Tigers advanced on penalties (5-3). |
| 9 | Of Notre Dame's 16 players who have recorded starts this season are either sophomores or freshmen. |
| 8 | The Irish are +8 in goals in first halves this season, outscoring opponents 15-7. |
| 7 | Conference tournament titles the Irish have won in program history (1 ACC, 3 Big East, 3 MCC). |
| 7 | The Irish are 7-0-0 in matches this season when scoring the opening goal. |
| 6 | Goals scored by Daniel Russo to lead the Irish in scoring this season, four of which have come in the last two matches. |
| 3 | Goals scored by Daniel Russo in the come-from-behind 3-2 win over Michigan, marking the junior's first career hat trick. It was the first hat trick scored by an Irish player this season. |
| 3 | The TopDrawerSoccer national ranking for Notre Dame's freshman class which features four players in the top 100. |
| 2 | College Cup appearances in program history, including last season's run to the semifinals. |
| 1 | Notre Dame men's soccer national championship, earned by way of a 2-1 win over Maryland in the final game of the 2013 NCAA College Cup in West Chester, Pennsylvania. |

2022 ACC MEN'S SOCCER CHAMPIONSHIP



**WEDNESDAY
NOVEMBER 2**
Campus Sites
FIRST ROUND

**SUNDAY
NOVEMBER 6**
Campus Sites
QUARTERFINALS

**WEDNESDAY
NOVEMBER 9**
Campus Sites
SEMIFINALS

**SUNDAY
NOVEMBER 13**
WakeMed Soccer Park
FINAL

#9 NOTRE DAME

ACCN MATCH 1
ESPNI 8 pm

#8 CLEMSON

ACCN MATCH 5
ESPNI 8 pm

#1 DUKE

#12 VIRGINIA TECH

ACCN MATCH 2
ESPNI 6 pm

#5 LOUISVILLE

ACCN MATCH 6
ESPNI 2 pm

#4 WAKE FOREST

ACCN MATCH 9
ESPNI 5 or 7 pm

#11 NC STATE

ACCN MATCH 3
ESPNI 7 pm

#6 PITT

ACCN MATCH 7
ESPNI 4 pm

#3 VIRGINIA

ESPN U CHAMPIONSHIP
Noon

ACC CHAMPION

#10 BOSTON COLLEGE

ACCN MATCH 4
ESPNI 6 pm

#7 NORTH CAROLINA

ACCN MATCH 8
ESPNI 6 pm

#2 SYRACUSE

ACCN MATCH 10
ESPNI 5 or 7 pm

FIRST ROUND • CAMPUS SITES • NOVEMBER 2 (6, 7 OR 8 PM)
QUARTERFINALS • CAMPUS SITES • NOVEMBER 6 (2, 4, 6 & 8 PM)
SEMIFINALS • CAMPUS SITES • NOVEMBER 9 (5 & 7 PM)
CHAMPIONSHIP • CARY, N.C. • NOVEMBER 13 (NOON)

2022 NOTRE DAME ROSTER

| No. | Name | Pos. | Yr. | Ht. | Wt. | Hometown/Previous School |
|-----|----------------------|------|-----|------|-----|--|
| 0 | Simone Baravelli | GK | SO | 6-1 | 180 | Verona, Italy / Educandato Statale Agil Angeli |
| 1 | Owen Cornell | GK | FR | 6-0 | 167 | La Grange, IL / Lyons Township |
| 2 | Mitch Ferguson | D | FR | 6-4 | 190 | Glen Carbon, IL / Baker Web Academy |
| 3 | Reese Mayer | D | SR | 6-2 | 175 | Baltimore, MD / McDonogh School |
| 4 | Aaron Hill | D | SR | 6-3 | 190 | Albuquerque, NM / Albuquerque Academy |
| 5 | Kyle Genenbacher | D | SO | 5-10 | 182 | Farmington, MO / Farmington |
| 6 | Michael Pellegrino | M | SR | 6-0 | 175 | Wenonah, NJ / YSC Academy |
| 7 | Ethan O'Brien | M | SR | 5-11 | 145 | Bellevue, WA / Eastside Catholic / New Albany |
| 8 | Matthew Radivojsa | M | JR | 5-10 | 150 | Oakville, ON / Saint Thomas Aquinas |
| 9 | Eno Nto | F | SO | 5-11 | 157 | Derby, England / Repton School |
| 10 | Matthew McLaughlin | M | JR | 6-0 | 160 | Broadview Heights, OH / Saint Ignatius |
| 11 | Daniel Russo | F | JR | 6-0 | 165 | Jackson, NJ / Jackson Memorial |
| 12 | Daniel Boateng | M | FR | 5-6 | 140 | Carpinteria, California & Accra, Ghana / Cate School |
| 13 | Bryce Boneau | M | SO | 5-10 | 160 | Keller, TX / Keller |
| 14 | Mo Williams | D | GS | 6-2 | 190 | West Orange, NJ / West Orange |
| 15 | Paddy Burns | D | JR | 6-0 | 175 | Crumlin, Northern Ireland / St. Malachy's College |
| 16 | KK Baffour | M | FR | 5-8 | 145 | Southport, Connecticut & Kumasi, Ghana / The Taft School |
| 17 | Mateo Acosta | D | SO | 6-0 | 165 | Skokie, IL / Niles West |
| 18 | Josh Ramsey | D | SO | 6-0 | 190 | Plano, TX / Texas Connections Academy |
| 19 | Michael Rossi | F | SO | 6-5 | 225 | Glen Ellyn, IL / Glenbard West |
| 21 | Matthew Rouu | F | SO | 5-10 | 155 | Germantown, WI / Laurel Springs |
| 22 | PJ Bujouves | M | SR | 5-8 | 155 | Toronto, ON / Upper Canada College |
| 23 | Alex Salvino | F | JR | 6-3 | 190 | Western Springs, IL / Lyons Township |
| 24 | Sebastian Green | M | FR | 5-9 | 155 | Monterey, California / Northwood School (NY) |
| 26 | Ben Giacobello | M | GS | 5-9 | 145 | San Clemente, CA / San Clemente |
| 27 | Wyatt Borso | F | FR | 6-1 | 180 | Aurora, Illinois |
| 28 | Nicholas Legendre | F | FR | 5-9 | 150 | Rio Rancho, New Mexico / Cleveland |
| 29 | Cleveland Sellers IV | D | SO | 6-2 | 170 | Charlotte, NC / Northwest School of the Arts |
| 30 | Liam Egan | GK | SO | 6-5 | 165 | Louisville, KY / Bridgton Academy |
| 31 | Bryan Dowd | GK | JR | 6-3 | 175 | Willow Springs, IL / Fenwick |

| | | | |
|-----------|-----------------|-----|----------------|
| HC | Chad Riley | 5th | Notre Dame '04 |
| AC | Mike Graczyk | 3rd | New Mexico '07 |
| AC | Jeff Rowland | 2nd | New Mexico '06 |
| AC | Jamison Edwards | 2nd | Louisville '19 |

| | |
|--------------------|-----------------|
| Bujouves | boo-jew-vis |
| Egan | EE-gan |
| Genenbacher | gen-en-BOCK-er |
| Giacobello | JACK-uh-bell-oh |
| Graczyk | GRAY-zack |
| Legendre | le-jen-DREE |
| Eno Nto | EN-oh IN-toe |
| Radivojsa | rad-ih-VOY-suh |
| Rouu | rue |

IRISH FACTS & FIGURES



ATLANTIC REGION

| | ACC | Overall |
|----------------|-------|---------|
| Syracuse | 5-1-2 | 12-2-3 |
| Wake Forest | 5-3 | 13-4 |
| Louisville | 4-3-1 | 9-4-3 |
| Clemson | 3-4-1 | 10-5-1 |
| Boston College | 1-4-3 | 4-6-5 |
| NC State | 1-5-2 | 6-6-5 |

COASTAL REGION

| | ACC | Overall |
|-------------------|--------------|--------------|
| Duke | 5-0-3 | 11-0-4 |
| Virginia | 5-1-2 | 9-4-3 |
| Pitt | 3-2-3 | 7-3-5 |
| North Carolina | 2-2-4 | 7-4-5 |
| Notre Dame | 3-4-1 | 8-6-2 |
| Virginia Tech | 0-8 | 2-13-1 |

ACC Preseason Coaches Poll

Atlantic Division

1. Clemson (9), 64
2. Wake Forest (3), 55
3. Louisville, 47
4. Syracuse, 33
5. Boston College, 28
6. NC State, 19

Coastal Division

1. Pitt (6), 57
2. North Carolina (5), 52
- 3. Notre Dame (1), 44**
4. Duke, 38
5. Virginia Tech, 34
6. Virginia, 21

ACC PRESEASON WATCH LIST

- Victor Souza, Sr., D, Boston College
- Mohamed Seye, Sr., F, Clemson
- Peter Stroud, Jr., M, Duke
- Eric Danquah, Jr., M, Louisville
- Sebastian Schacht, Gr., M, North Carolina
- Luke Hille, So., F, NC State
- Bryan Dowd, Jr., GK, Notre Dame**
- Jackson Walti, Gr., M, Pitt
- Amferny Sinclair, Sr., M, Syracuse
- Andreas Ueland, Sr., D, Virginia
- Mayola Kinyua, Sr., M, Virginia Tech
- Omar Hernandez, Sr., M, Wake Forest

SETTING THE STAGE

- The Irish open postseason play at Clemson in a pivotal 8-9 matchup at 8 p.m. ET on Wednesday, Nov. 2 at Riggs Field. The match will air on ACCN.

IRISH IN THE ACC TOURNEY

- Notre Dame has an overall ACC Tournament record of 13-6-3 and has reached at least the quarterfinal round in all nine seasons in the league.
- The Irish are the defending ACC champs, winning the 2021 title for the first time in program history. Notre Dame didn't allow a goal over four matches and defeated Duke by a score of 2-0 in the final.
- Notre Dame has reached the semifinal round or beyond in the ACC Championship in six of its nine seasons as a conference member.
- The Irish have made two appearances in the conference tournament finals.
- The Irish have won at least one match in all nine ACC Championship appearances.
- Prior to joining the ACC, Notre Dame won three Big East Tournament titles and three MCC (Midwestern Collegiate Conference) titles.

THE CLEMSON SERIES

- The Irish and Tigers will meet on the pitch for the 13th time on Wednesday.
- Notre Dame holds a lead in the all-time series with a record of 6-4-2.
- The Irish and Tigers played twice last season with Notre Dame holding a record of 1-0-1.
- In the regular season matchup, the Irish defeated Clemson 2-0 at Riggs Field. Both of Notre Dame's goals came in the second half, as Daniel Russo and Matthew Roou both scored.
- The Tigers advanced past the Irish in the College Cup semifinals on penalties in the second meeting, winning the shootout 5-3.

DAN THE MAN

- Daniel Russo is in the best form of his life at the moment, scoring four goals over the last two matches.
- Russo leads the team this season with six goals, setting a career high for goals in a season.
- The junior scored the first hat trick of his career in the comeback win over Michigan, all coming in the second half.

FIRST HALF DOMINANCE

- The Irish are outscoring the opposition 15-7 over the opening 45 minutes of play this season.
- Notre Dame has given up just five goals from open play in the first half of matches this season, the other two goals coming from penalties.
- The Irish are currently 5-0-0 when holding a lead at the half.

NUMBERS TO KNOW

- Notre Dame has won every match in which it has scored multiple goals, going 7-0-0 when putting two or more goals on the scoreboard in 2022.
- The Irish are a perfect 7-0-0 when scoring first in matches this season.
- Twelve different Notre Dame players have scored a goal this season.
- Eight players have recorded multiple assists through 16 games, with Daniel Russo leading the Irish with four assists on the season.
- Of the 16 Notre Dame players that have recorded starts this season, nine have been either freshmen or sophomores.

100 CLUB

- With a win over UIC, McFarland Family Head Men's Soccer Coach Chad Riley recorded the 100th victory of his head coaching career.
- Riley is the fifth head coach in program history to reach the 100-win mark for their career.
- Fifty-one of Riley's wins have come at Notre Dame while 51 came in his five-year stint at Dartmouth.

#3 RANKED FRESHMAN CLASS IN THE COUNTRY

- The Irish welcome a seven-man freshman class to South Bend which was ranked as the No. 3 class in the country by TopDrawerSoccer.
- The class features four players ranked in IMG's top 200 rankings, each ranking in the top 100.
- The seven players come from a combined five states and one foreign country (Ghana).
- Kelvin Baffour (M), Daniel Boateng (M), Wyatt Borso (F), Owen Cornell (GK), Mitchell Ferguson (D), Sebastian Green (M) and Nicholas Legendre (F) make up the class.
- Notre Dame also welcomes Mo Williams to the team, a grad transfer defender from Seton Hall.

Notre Dame Record in 2022 Season

| | |
|-------------------------------|-------|
| Home..... | 5-3-1 |
| Away | 3-3-1 |
| Neutral | 0-0-0 |
| Vs. Ranked teams..... | 0-3-1 |
| Scoring first..... | 7-0-0 |
| Opponent scores first..... | 1-6-2 |
| Leading at halftime | 5-0-0 |
| Trailing at halftime | 1-4-1 |
| Tied at halftime | 2-2-1 |
| In overtime..... | 0-0-0 |
| Scoring 1 goal | 1-1-2 |
| Scoring 2 goals | 2-0-0 |
| Scoring 3 or more goals | 5-0-0 |
| Allowing 1 goal..... | 2-3-2 |
| Allowing 2 goals..... | 3-2-0 |
| Allowing 3 or more goals..... | 0-1-0 |
| One-goal games | 5-3-0 |
| Two-goal games..... | 1-3-0 |
| Three-plus goal games..... | 2-0-0 |
| Wins more corners | 4-4-1 |
| Opp. wins more corners | 4-1-0 |
| Corners are equal..... | 0-0-1 |
| More shots than opp. | 5-4-1 |
| Opp. has more shots..... | 1-2-1 |
| Shots are the same..... | 2-0-0 |
| More saves than opp..... | 2-2-0 |
| Opp. has more saves..... | 6-3-1 |
| Saves are the same..... | 0-1-1 |
| In August | 1-1-0 |
| In September..... | 4-2-1 |
| In October | 3-3-1 |
| In November..... | 0-0-0 |
| Day Games | 1-2-0 |
| Night Games..... | 7-4-2 |

CHAD RILEY - MCFARLAND FAMILY MEN'S HEAD SOCCER COACH



CHAD RILEY

McFarland Family Men's
Head Soccer Coach

5th Season

Notre Dame '04

CHAD RILEY
PROFILE

- **Hire Date:** Jan. 4, 2018
- **Career Record:** 102-61-25 (.609)
- **ND Record:** 51-35-11 (.582)
- **NCAA Tournament Appearances:** 7
(3, Notre Dame head coach, 4 Dartmouth head coach)
- **Hometown:** Houston, Texas
- **Education:** Theology
- **Marital Status:** Wife - Caitlin
- **Children:** Georgina, Prescott, Bernadette

COACHING
EXPERIENCE

| | |
|--------------|---|
| 2004 | Assistant Coach Oberlin College |
| 2005 | Assistant Coach St. John's University |
| 2006-11 | Assistant Coach University of Notre Dame |
| 2012 | Assistant Coach Dartmouth College |
| 2013-2017 | Head Coach Dartmouth College |
| 2018-present | Head Coach University of Notre Dame |

PLAYING
EXPERIENCE

| | |
|---------|---|
| 2000-03 | University of Notre Dame BIG EAST Conference 3-Time All-BIG EAST 2003 Notre Dame Captain |
|---------|---|

Year-By-Year Collegiately With Chad Riley

| Year | School | Record | Postseason/Honors/Final Rankings |
|--|------------------------|------------------------|--|
| 2004 | Oberlin (assistant) | 9-8-3 | |
| Totals Oberlin Assistant | | 9-8-3 (.525) | 1 season |
| 2005 | St. John's (assistant) | 11-6-5 | NCAA Round of 16 |
| Totals St. John's Assistant | | 11-6-5 (.614) | 1 season |
| 2006 | Notre Dame (assistant) | 15-6-2 | NCAA Quarterfinals #6 NSCAA |
| 2007 | Notre Dame (assistant) | 14-5-5 | NCAA Quarterfinals #6 NSCAA |
| 2008 | Notre Dame (assistant) | 12-7-2 | NCAA Second Round #16 NSCAA |
| 2009 | Notre Dame (assistant) | 11-8-4 | NCAA Second Round |
| 2010 | Notre Dame (assistant) | 10-6-4 | NCAA Second Round #21 NSCAA |
| 2011 | Notre Dame (assistant) | 9-5-4 | |
| Totals Notre Dame Assistant | | 71-37-21 (.632) | 6 seasons |
| 2012 | Dartmouth (assistant) | 9-7-0 | |
| Totals Dartmouth Assistant | | 9-7-0 (.632) | 1 season |
| 2013 | Dartmouth | 6-7-4 | |
| 2014 | Dartmouth | 12-5-2 | Ivy League Champion NCAA Second Round #25 NSCAA |
| 2015 | Dartmouth | 12-6-1 | Ivy League Coach of the Year Ivy League Champion NCAA Second Round Ivy League Coach of the Year |
| 2016 | Dartmouth | 9-5-5 | Ivy League Champion NCAA Second Round Ivy League Champion |
| 2017 | Dartmouth | 12-3-2 | NCAA Second Round #23 United Soccer Coaches Ivy League Coach of the Year |
| Totals Dartmouth Head Coach | | 51-26-14 (.637) | 5 seasons |
| 2018 | Notre Dame | 11-7-3 (.595) | NCAA Quarterfinal #8 United Soccer Coaches |
| 2019 | Notre Dame | 10-8-1 (.553) | NCAA First Round |
| 2020-21 | Notre Dame | 8-9-0 (.471) | |
| 2021 | Notre Dame | 14-5-5 (.688) | NCAA College Cup ACC Champion |
| 2022 | Notre Dame | 8-6-2 (.563) | |
| Totals McFarland Family Men's Head Soccer Coach | | 51-35-11 (.582) | 5 seasons |

2022 NCAA TEAM STAT RANKINGS

| Statistic | National Rank | Conference Rank | Value | National Leader | Value | Conference Leader | Value |
|---|---------------|-----------------|-------|--------------------------|-------|-------------------|-------|
| Assists Per Game (203 ranked) | 51 | 6 | 1.69 | Charlotte | 3.50 | Wake Forest | 3.29 |
| Corner Kicks Per Game (203 ranked) | 89 | 8 | 5.00 | New Hampshire | 8.33 | Clemson | 7.06 |
| Fouls Per Game (203 ranked) | 36 | 2 | 10.12 | Missouri St. | 7.29 | NC State | 9.19 |
| Goal Differential (203 ranked) | 48 | 7 | 10 | Washington | 31 | Wake Forest | 26 |
| Penalty Kicks (159 ranked) | 132 | 12 | 0.500 | 87 teams tied | 1.000 | 7 teams tied | 1.000 |
| Points Per Game (203 ranked) | 42 | 6 | 5.44 | Charlotte | 9.36 | Wake Forest | 8.12 |
| Red Cards (81 ranked) | | | | Houston Christian Temple | 6 | Boston College | 3 |
| Save Pct (203 ranked) | 140 | 8 | 0.701 | Duke | 0.904 | Duke | 0.904 |
| Saves Per Game (203 ranked) | 158 | 6 | 2.94 | Hartford | 7.38 | Virginia Tech | 4.38 |
| Scoring Offense (203 ranked) | 38 | 4 | 1.88 | Charlotte | 2.93 | Wake Forest | 2.41 |
| Shot Accuracy (203 ranked) | 159 | 11 | 0.391 | Memphis | 0.580 | Louisville | 0.467 |
| Shots Per Game (203 ranked) | 41 | 6 | 14.06 | Dayton | 22.13 | Syracuse | 17.59 |
| Shots on Goal Per Game (203 ranked) | 69 | 8 | 5.50 | Dayton | 8.60 | Syracuse | 7.24 |
| Shutout Percentage (200 ranked) | 146 | 10 | 0.188 | Duke | 0.733 | Duke | 0.733 |
| Team Goals Against Average (203 ranked) | 93 | 10 | 1.250 | Duke | 0.333 | Duke | 0.333 |
| Total Assists (202 ranked) | 50 | 6 | 27 | Wake Forest | 56 | Wake Forest | 56 |
| Total Goals (203 ranked) | 38 | 3 | 30 | Quinnipiac | 46 | Wake Forest | 41 |
| Total Points (203 ranked) | 39 | 5 | 87 | Quinnipiac | 141 | Wake Forest | 138 |
| Won-Lost-Tied Percentage (203 ranked) | 85 | 9 | 0.562 | Washington | 0.906 | Duke | 0.867 |
| Yellow Cards (203 ranked) | 169 | 11 | 23 | FGCU | 51 | Virginia | 42 |

2022 NCAA INDIVIDUAL STAT RANKINGS

| Statistic | Player | National Rank | Conference Rank | Value | National Leader | Value | Conference Leader | Value |
|-------------------------------------|--|------------------|-----------------|-------------------------|---|----------------|--|--------------------|
| Assists Per Game (142 ranked) | | | | | Tom Cooklin, George Washington | 0.81 | Filip Mirkovic, Pittsburgh | 0.77 |
| Game-Winning Goals (17 ranked) | | | | | Emil Jaaskelainen, LIU | 6 | Shakur Mohammed, Duke | 5 |
| Goalie Minutes Played (147 ranked) | Bryan Dowd | 37 | 4 | 1395:00 | Tetsuya Kadono, Cal St. Fullerton | 1637:32 | Holden Brown, Virginia Russell Shealy, Syracuse | 1440:00 1440:00 |
| Goals Against Average (150 ranked) | Bryan Dowd | 109 | 10 | 1.290 | Eliot Hamill, Duke | 0.333 | Eliot Hamill, Duke | 0.333 |
| Goals Per Game (144 ranked) | Daniel Russo | 131 | 11 | 0.38 | Lucca Dourado, UCF | 0.92 | Stefan Sigurdarson, Boston College | 0.80 |
| Penalty Kicks (248 ranked) | Daniel Russo Paddy Burns Reese Mayer | 1 218 248 | 1 19 21 | 1.000 0.500 0.000 | 204 players tied | 1.000 | 18 players tied | 1.000 |
| Points Per Game (144 ranked) | Daniel Russo | 107 | 10 | 1.00 | Ryan Becher, UMBC | 2.25 | Stefan Sigurdarson, Boston College | 1.67 |
| Red Cards (12 ranked) | | | | | 11 players tied | 2 | Jeorgio Kocovski, Syracuse | 2 |
| Save Pct (150 ranked) | | | | | Eliot Hamill, Duke | 0.900 | Eliot Hamill, Duke | 0.900 |
| Saves Per Game (150 ranked) | | | | | Rotem Fadida, Hartford | 6.36 | Joe van der Sar, Pittsburgh | 3.73 |
| Shot Accuracy (149 ranked) | Daniel Russo Matthew Rooou | 129 135 | 9 10 | 0.441 0.429 | Alexander Levensgood, William & Mary | 0.676 | Stefan Sigurdarson, Boston College | 0.576 |
| Shots Per Game (150 ranked) | Matthew Rooou | 144 | 12 | 2.19 | Emil Jaaskelainen, LIU | 4.54 | Leo Afonso, Virginia | 3.62 |
| Shots on Goal Per Game (147 ranked) | | | | | MD Myers, Rutgers | 2.06 | Leo Afonso, Virginia | 1.50 |
| Shutouts (38 ranked) | | | | | Eliot Hamill, Duke | 11 | Eliot Hamill, Duke | 11 |
| Total Assists (109 ranked) | | | | | Tom Cooklin, George Washington | 13 | Filip Mirkovic, Pittsburgh | 10 |
| Total Goals (145 ranked) | Daniel Russo Paddy Burns | 92 145 | 7 12 | 6 5 | Eliot Goldthorp, Hofstra | 14 | Stefan Sigurdarson, Boston College | 12 |
| Total Points (133 ranked) | Daniel Russo | 84 | 6 | 16 | Ryan Becher, UMBC | 36 | Stefan Sigurdarson, Boston College | 25 |
| Total Saves (150 ranked) | Bryan Dowd | 112 | 6 | 41 | William Howard, Canisius Ethan Russell, Mount St. Mary's Chad Smith, Eastern Ill. | 83 83 83 | Joe van der Sar, Pittsburgh | 56 |
| Yellow Cards (434 ranked) | KK Baffour Josh Ramsey Reese Mayer | 11 169 434 | 1 10 21 | 6 4 3 | Eduardo Perez, UIW | 94 | 94 players tied | 6 |

2022 TEAM STATISTICS

| Date | Opponent | Score | Att. |
|--------------|-----------------|-------|------|
| 08/25/2022 | Seattle U | L 1-3 | 437 |
| 08/29/2022 | at Michigan St. | W 3-2 | 1684 |
| 09/06/2022 | DePaul | T 1-1 | 337 |
| * 09/10/2022 | at Syracuse | L 0-1 | 1872 |
| * 09/16/2022 | at Virginia | W 2-1 | 2255 |
| 09/21/2022 | Chicago St. | W 4-0 | 417 |
| * 09/24/2022 | North Carolina | L 0-1 | 818 |
| 09/27/2022 | Kalamazoo | W 8-0 | 123 |
| * 09/30/2022 | Boston College | W 2-1 | 754 |
| 10/05/2022 | at Indiana | L 0-1 | 2311 |
| * 10/08/2022 | Louisville | L 0-2 | 419 |
| * 10/14/2022 | at Duke | L 0-2 | 1643 |
| 10/18/2022 | at UIC | W 4-2 | 588 |
| * 10/21/2022 | Virginia Tech | W 1-0 | 1279 |
| 10/25/2022 | Michigan | W 3-2 | 359 |
| * 10/28/2022 | at Pittsburgh | T 1-1 | 903 |

| Record | Overall | Home | Away | Neutral |
|----------------|---------|-------|-------|---------|
| All Games | 8-6-2 | 5-3-1 | 3-3-1 | 0-0-0 |
| Conference | 3-4-1 | 2-2-0 | 1-2-1 | 0-0-0 |
| Non-Conference | 5-2-1 | 3-1-1 | 2-1-0 | 0-0-0 |

| # | Player | GP | G | A | PTS | SH | SH% | SOG | SOG% | GWG | PK-ATT |
|------------------|-----------------------|-----------|-----------|-----------|-----------|------------|-------------|-----------|-------------|----------|------------|
| 11 | Russo, Daniel | 16 | 6 | 4 | 16 | 34 | .176 | 15 | .441 | 1 | 1-1 |
| 21 | Roou, Matthew | 16 | 4 | 4 | 12 | 35 | .114 | 15 | .429 | 1 | 0-0 |
| 15 | Burns, Paddy | 16 | 5 | 0 | 10 | 27 | .185 | 9 | .333 | 2 | 1-2 |
| 16 | Baffour, KK | 15 | 2 | 3 | 7 | 18 | .111 | 6 | .333 | 1 | 0-0 |
| 9 | Nto, Eno | 16 | 2 | 3 | 7 | 12 | .167 | 8 | .667 | 1 | 0-0 |
| 5 | Genenbacher, Kyle | 16 | 2 | 3 | 7 | 9 | .222 | 4 | .444 | 0 | 0-0 |
| 27 | Borso, Wyatt | 16 | 2 | 1 | 5 | 23 | .087 | 9 | .391 | 1 | 0-0 |
| 2 | Ferguson, Mitch | 16 | 1 | 2 | 4 | 9 | .111 | 3 | .333 | 0 | 0-0 |
| 28 | Legendre, Nicholas | 7 | 1 | 1 | 3 | 2 | .500 | 2 | 1.000 | 0 | 0-0 |
| 13 | Boneau, Bryce | 16 | 0 | 3 | 3 | 15 | .000 | 3 | .200 | 0 | 0-0 |
| 26 | Giacobello, Ben | 13 | 1 | 0 | 2 | 10 | .100 | 4 | .400 | 0 | 0-0 |
| 24 | Green, Sebastian | 16 | 1 | 0 | 2 | 4 | .250 | 2 | .500 | 0 | 0-0 |
| 4 | Hill, Aaron | 1 | 1 | 0 | 2 | 1 | 1.000 | 1 | 1.000 | 0 | 0-0 |
| 8 | Radivojsa, Matthew | 15 | 0 | 2 | 2 | 5 | .000 | 1 | .200 | 0 | 0-0 |
| 31 | Dowd, Bryan | 16 | 0 | 1 | 1 | 0 | .000 | 0 | .000 | 0 | 0-0 |
| 3 | Mayer, Reese | 16 | 0 | 0 | 0 | 10 | .000 | 3 | .300 | 0 | 0-1 |
| 14 | Williams, Maurice | 14 | 0 | 0 | 0 | 6 | .000 | 2 | .333 | 0 | 0-0 |
| 22 | Bujouves, PJ | 2 | 0 | 0 | 0 | 2 | .000 | 0 | .000 | 0 | 0-0 |
| 18 | Ramsey, Josh | 16 | 0 | 0 | 0 | 1 | .000 | 0 | .000 | 0 | 0-0 |
| 10 | McLaughlin, Matthew | 1 | 0 | 0 | 0 | 1 | .000 | 0 | .000 | 0 | 0-0 |
| 17 | Acosta, Mateo | 1 | 0 | 0 | 0 | 1 | .000 | 1 | 1.000 | 0 | 0-0 |
| 12 | Boateng, Daniel | 1 | 0 | 0 | 0 | 0 | .000 | 0 | .000 | 0 | 0-0 |
| 19 | Rossi, Michael | 4 | 0 | 0 | 0 | 0 | .000 | 0 | .000 | 0 | 0-0 |
| 23 | Salvino, Alex | 1 | 0 | 0 | 0 | 0 | .000 | 0 | .000 | 0 | 0-0 |
| 29 | Sellers IV, Cleveland | 1 | 0 | 0 | 0 | 0 | .000 | 0 | .000 | 0 | 0-0 |
| 30 | Egan, Liam | 1 | 0 | 0 | 0 | 0 | .000 | 0 | .000 | 0 | 0-0 |
| Total | | 16 | 30 | 27 | 87 | 225 | .133 | 88 | .391 | - | 2-4 |
| Opponents | | 16 | 20 | 15 | 55 | 168 | .119 | 67 | .399 | - | 4-4 |

Team statistics

| | ND | OPP |
|------------------------|------------|------------|
| SHOT STATISTICS | | |
| Goals-Shot attempts | 30-225 | 20-168 |
| Goals scored per game | 1.88 | 1.25 |
| Shot pct. | .133 | .119 |
| Shots on goal-Attempts | 88-225 | 67-168 |
| SOG pct. | .391 | .399 |
| Shots/Game | 14.1 | 10.5 |
| Assists | 27 | 15 |
| GOAL BREAKDOWN | | |
| Total Goals | 30 | 20 |
| Penalty | 2 | 4 |
| Unassisted | - | - |
| Overtime | 0 | 0 |
| Goals scored average | 1.88 | 1.25 |
| CORNER KICKS | 80 | 58 |
| PENALTY KICKS | 2-4 | 4-4 |
| OFFSIDES | 42 | 22 |
| PENALTIES | | |
| Fouls | 162 | 193 |
| Yellow cards | 23 | 42 |
| Red cards | 0 | 2 |
| ATTENDANCE | | |
| Total | 4943 | 11256 |
| Dates/Avg Per Date | 9/549 | 7/1608 |
| Neutral Site #/Avg | 0/0 | - |

| # | Goalie | GP | MIN. | GA | GA AVG | SAVES | PCT | W-L-T | SHO/CBO |
|------------------|-------------|-----------|----------------|-----------|-------------|-----------|-------------|--------------|----------|
| 31 | Dowd, Bryan | 16 | 1395:00 | 20 | 1.29 | 41 | .672 | 8-6-2 | 2/1 |
| 30 | Egan, Liam | 1 | 45:00 | 0 | 0.00 | 1 | 1.000 | 0-0-0 | 0/1 |
| TM | TEAM | - | 00:00 | 0 | 0.00 | 5 | 1.000 | 0-0-0 | 1/0 |
| Total | | 16 | 1440:00 | 20 | 1.25 | 47 | .701 | 8-6-2 | 3 |
| Opponents | | 16 | 1440:00 | 30 | 1.88 | 60 | .667 | 6-8-2 | 5 |

Goals by Periods

| Team | 1st | 2nd | OT1 | OT2 | TOTAL |
|-----------|-----|-----|-----|-----|-------|
| ND | 15 | 15 | 0 | 0 | 30 |
| Opponents | 7 | 13 | 0 | 0 | 20 |

Shots by Periods

| Team | 1st | 2nd | OT1 | OT2 | TOTAL |
|-----------|-----|-----|-----|-----|-------|
| ND | 87 | 138 | 0 | 0 | 225 |
| Opponents | 80 | 88 | 0 | 0 | 168 |

Saves by Periods

| Team | 1st | 2nd | OT1 | OT2 | TOTAL |
|-----------|-----|-----|-----|-----|-------|
| ND | 21 | 26 | 0 | 0 | 47 |
| Opponents | 22 | 38 | 0 | 0 | 60 |

Corners by Periods

| Team | 1st | 2nd | OT1 | OT2 | TOTAL |
|-----------|-----|-----|-----|-----|-------|
| ND | 32 | 48 | 0 | 0 | 80 |
| Opponents | 22 | 36 | 0 | 0 | 58 |

Fouls by Periods

| Team | 1st | 2nd | OT1 | OT2 | TOTAL |
|-----------|-----|-----|-----|-----|-------|
| ND | 74 | 88 | 0 | 0 | 162 |
| Opponents | 95 | 98 | 0 | 0 | 193 |



2022 INDIVIDUAL SEASON STATISTICS



2022-23 Notre Dame Men's Soccer
Extended Individual Statistics
All games

Page 1/2
as of Oct 31, 2022

Game Records

| Overall | Conference | Home | Away | Neutral |
|-----------|------------|-----------|-----------|-----------|
| 8 - 6 - 2 | 3 - 4 - 1 | 5 - 3 - 1 | 3 - 3 - 1 | 0 - 0 - 0 |

Team Box Score Extended

| No. | Player | GP-GS | G | GPG | A | APG | PTS | PPG | SH | SPG | SH% | SOG | SOG/G | SOG% | YC | RC | GWG | PK-ATT |
|------------------|-----------------------|-----------|-----------|-------------|-----------|-------------|-----------|-------------|------------|--------------|-------------|-----------|-------------|-------------|-----------|----------|----------|------------|
| 11 | Russo, Daniel | 16-10 | 6 | 0.38 | 4 | 0.25 | 16 | 1.00 | 34 | 2.13 | .176 | 15 | 0.94 | .441 | 0 | 0 | 1 | 1-1 |
| 21 | Roou, Matthew | 16-15 | 4 | 0.25 | 4 | 0.25 | 12 | 0.75 | 35 | 2.19 | .114 | 15 | 0.94 | .429 | 0 | 0 | 1 | 0-0 |
| 15 | Burns, Paddy | 16-16 | 5 | 0.31 | 0 | 0.00 | 10 | 0.63 | 27 | 1.69 | .185 | 9 | 0.56 | .333 | 2 | 0 | 2 | 1-2 |
| 16 | Baffour, KK | 15-8 | 2 | 0.13 | 3 | 0.20 | 7 | 0.47 | 18 | 1.20 | .111 | 6 | 0.40 | .333 | 6 | 0 | 1 | 0-0 |
| 9 | Nto, Eno | 16-5 | 2 | 0.13 | 3 | 0.19 | 7 | 0.44 | 12 | 0.75 | .167 | 8 | 0.50 | .667 | 0 | 0 | 1 | 0-0 |
| 5 | Genenbacher, Kyle | 16-12 | 2 | 0.13 | 3 | 0.19 | 7 | 0.44 | 9 | 0.56 | .222 | 4 | 0.25 | .444 | 2 | 0 | 0 | 0-0 |
| 27 | Borso, Wyatt | 16-11 | 2 | 0.13 | 1 | 0.06 | 5 | 0.31 | 23 | 1.44 | .087 | 9 | 0.56 | .391 | 0 | 0 | 1 | 0-0 |
| 2 | Ferguson, Mitch | 16-4 | 1 | 0.06 | 2 | 0.13 | 4 | 0.25 | 9 | 0.56 | .111 | 3 | 0.19 | .333 | 1 | 0 | 0 | 0-0 |
| 28 | Legendre, Nicholas | 7-0 | 1 | 0.14 | 1 | 0.14 | 3 | 0.43 | 2 | 0.29 | .500 | 2 | 0.29 | 1.000 | 1 | 0 | 0 | 0-0 |
| 13 | Boneau, Bryce | 16-16 | 0 | 0.00 | 3 | 0.19 | 3 | 0.19 | 15 | 0.94 | .000 | 3 | 0.19 | .200 | 0 | 0 | 0 | 0-0 |
| 26 | Giacobello, Ben | 13-13 | 1 | 0.08 | 0 | 0.00 | 2 | 0.15 | 10 | 0.77 | .100 | 4 | 0.31 | .400 | 0 | 0 | 0 | 0-0 |
| 24 | Green, Sebastian | 16-5 | 1 | 0.06 | 0 | 0.00 | 2 | 0.13 | 4 | 0.25 | .250 | 2 | 0.13 | .500 | 1 | 0 | 0 | 0-0 |
| 4 | Hill, Aaron | 1-0 | 1 | 1.00 | 0 | 0.00 | 2 | 2.00 | 1 | 1.00 | 1.000 | 1 | 1.00 | 1.000 | 0 | 0 | 0 | 0-0 |
| 8 | Radivojsa, Matthew | 15-1 | 0 | 0.00 | 2 | 0.13 | 2 | 0.13 | 5 | 0.33 | .000 | 1 | 0.07 | .200 | 1 | 0 | 0 | 0-0 |
| 31 | Dowd, Bryan | 16-16 | 0 | 0.00 | 1 | 0.06 | 1 | 0.06 | 0 | 0.00 | .000 | 0 | 0.00 | .000 | 0 | 0 | 0 | 0-0 |
| 3 | Mayer, Reese | 16-14 | 0 | 0.00 | 0 | 0.00 | 0 | 0.00 | 10 | 0.63 | .000 | 3 | 0.19 | .300 | 3 | 0 | 0 | 0-1 |
| 14 | Williams, Maurice | 14-14 | 0 | 0.00 | 0 | 0.00 | 0 | 0.00 | 6 | 0.43 | .000 | 2 | 0.14 | .333 | 0 | 0 | 0 | 0-0 |
| 22 | Bujouves, PJ | 2-0 | 0 | 0.00 | 0 | 0.00 | 0 | 0.00 | 2 | 1.00 | .000 | 0 | 0.00 | .000 | 0 | 0 | 0 | 0-0 |
| 18 | Ramsey, Josh | 16-16 | 0 | 0.00 | 0 | 0.00 | 0 | 0.00 | 1 | 0.06 | .000 | 0 | 0.00 | .000 | 4 | 0 | 0 | 0-0 |
| 10 | McLaughlin, Matthew | 1-0 | 0 | 0.00 | 0 | 0.00 | 0 | 0.00 | 1 | 1.00 | .000 | 0 | 0.00 | .000 | 0 | 0 | 0 | 0-0 |
| 17 | Acosta, Mateo | 1-0 | 0 | 0.00 | 0 | 0.00 | 0 | 0.00 | 1 | 1.00 | .000 | 1 | 1.00 | 1.000 | 0 | 0 | 0 | 0-0 |
| 12 | Boateng, Daniel | 1-0 | 0 | 0.00 | 0 | 0.00 | 0 | 0.00 | 0 | 0.00 | .000 | 0 | 0.00 | .000 | 0 | 0 | 0 | 0-0 |
| 19 | Rossi, Michael | 4-0 | 0 | 0.00 | 0 | 0.00 | 0 | 0.00 | 0 | 0.00 | .000 | 0 | 0.00 | .000 | 1 | 0 | 0 | 0-0 |
| 23 | Salvino, Alex | 1-0 | 0 | 0.00 | 0 | 0.00 | 0 | 0.00 | 0 | 0.00 | .000 | 0 | 0.00 | .000 | 0 | 0 | 0 | 0-0 |
| 29 | Sellers IV, Cleveland | 1-0 | 0 | 0.00 | 0 | 0.00 | 0 | 0.00 | 0 | 0.00 | .000 | 0 | 0.00 | .000 | 0 | 0 | 0 | 0-0 |
| 30 | Egan, Liam | 1-0 | 0 | 0.00 | 0 | 0.00 | 0 | 0.00 | 0 | 0.00 | .000 | 0 | 0.00 | .000 | 0 | 0 | 0 | 0-0 |
| Total | | 16 | 30 | 1.88 | 27 | 1.69 | 87 | 5.44 | 225 | 14.06 | .133 | 88 | 5.50 | .391 | 23 | 0 | - | 2-4 |
| Opponents | | 16 | 20 | 1.25 | 15 | 0.94 | 55 | 3.44 | 168 | 10.50 | .119 | 67 | 4.19 | .399 | 42 | 2 | - | 4-4 |

| ## | Player | GP-GS | MINUTES | GA | GA AVG | SAVES | SAVES/G | SAVES% | W | L | T | SHO/CBO |
|------------------|-------------|-----------|----------------|-----------|-------------|-----------|-------------|-------------|----------|----------|----------|----------|
| 31 | Dowd, Bryan | 16-16 | 1395:00 | 20 | 1.29 | 41 | 2.56 | .672 | 8 | 6 | 2 | 2/1 |
| 30 | Egan, Liam | 1-0 | 45:00 | 0 | 0.00 | 1 | 1.00 | 1.000 | 0 | 0 | 0 | 0/1 |
| TM | TEAM | - | 00:00 | 0 | 0.00 | 5 | 0.31 | 1.000 | 0 | 0 | 0 | 1/0 |
| Total | | 16 | 1440:00 | 20 | 1.25 | 47 | 2.94 | .701 | 8 | 6 | 2 | 3 |
| Opponents | | 16 | 1440:00 | 30 | 1.88 | 60 | 3.75 | .667 | 6 | 8 | 2 | 5 |

Goals by Periods

| Team | 1st | 2nd | OT1 | OT2 | TOTAL |
|-----------|-----|-----|-----|-----|-------|
| ND | 15 | 15 | 0 | 0 | 30 |
| Opponents | 7 | 13 | 0 | 0 | 20 |

Corners by Periods

| Team | 1st | 2nd | OT1 | OT2 | TOTAL |
|-----------|-----|-----|-----|-----|-------|
| ND | 32 | 48 | 0 | 0 | 80 |
| Opponents | 22 | 36 | 0 | 0 | 58 |

Shots by Periods

| Team | 1st | 2nd | OT1 | OT2 | TOTAL |
|-----------|-----|-----|-----|-----|-------|
| ND | 87 | 138 | 0 | 0 | 225 |
| Opponents | 80 | 88 | 0 | 0 | 168 |

Fouls by Periods

| Team | 1st | 2nd | OT1 | OT2 | TOTAL |
|-----------|-----|-----|-----|-----|-------|
| ND | 74 | 88 | 0 | 0 | 162 |
| Opponents | 95 | 98 | 0 | 0 | 193 |

2022 GAME-BY-GAME COMPARISON



2022-23 Notre Dame Men's Soccer
Team Game-by-Game Comparison
All games

Page 1/1
as of Oct 31, 2022

| Date | Opponent | Score | Goals | Assists | Shots | On Goal | Corners | Fouls | YC | RC | Offsides |
|---------------|----------------|--------------|--------------|--------------|----------------|--------------|--------------|----------------|--------------|------------|--------------|
| 08/25/2022 | Seattle U | 1-3 | 1/3 | 2/2 | 19/10 | 4/4 | 10/5 | 9/15 | 2/4 | 0/0 | 2/2 |
| 08/29/2022 | Michigan St. | 3-2 | 3/2 | 3/2 | 22/15 | 6/5 | 6/8 | 15/12 | 2/1 | 0/0 | 1/1 |
| 09/06/2022 | DePaul | 1-1 | 1/1 | 1/1 | 16/6 | 5/2 | 9/1 | 12/9 | 1/5 | 0/1 | 5/0 |
| 09/10/2022 | Syracuse | 0-1 | 0/1 | 0/1 | 3/22 | 1/9 | 1/6 | 14/19 | 0/0 | 0/0 | 2/0 |
| 09/16/2022 | Virginia | 2-1 | 2/1 | 1/0 | 8/20 | 3/8 | 3/9 | 13/13 | 4/4 | 0/0 | 0/0 |
| 09/21/2022 | Chicago St. | 4-0 | 4/0 | 4/0 | 17/2 | 4/0 | 8/0 | 9/12 | 0/4 | 0/0 | 5/0 |
| 09/24/2022 | North Carolina | 0-1 | 0/1 | 0/0 | 10/6 | 2/2 | 4/2 | 11/12 | 1/1 | 0/0 | 3/2 |
| 09/27/2022 | Kalamazoo | 8-0 | 8/0 | 6/0 | 20/1 | 13/1 | 5/1 | 10/13 | 0/4 | 0/0 | 0/1 |
| 09/30/2022 | Boston College | 2-1 | 2/1 | 3/0 | 12/12 | 4/5 | 7/2 | 8/12 | 1/4 | 0/0 | 2/2 |
| 10/05/2022 | Indiana | 0-1 | 0/1 | 0/0 | 9/12 | 1/5 | 1/3 | 12/15 | 2/0 | 0/0 | 9/4 |
| 10/08/2022 | Louisville | 0-2 | 0/2 | 0/3 | 15/5 | 3/4 | 8/2 | 8/12 | 0/2 | 0/0 | 4/3 |
| 10/14/2022 | Duke | 0-2 | 0/2 | 0/2 | 8/4 | 4/4 | 6/3 | 11/11 | 3/2 | 0/0 | 1/0 |
| 10/18/2022 | UIC | 4-2 | 4/2 | 3/1 | 14/14 | 12/4 | 6/4 | 7/13 | 3/4 | 0/0 | 5/0 |
| 10/21/2022 | Virginia Tech | 1-0 | 1/0 | 0/0 | 15/12 | 7/0 | 2/5 | 9/11 | 0/4 | 0/0 | 1/2 |
| 10/25/2022 | Michigan | 3-2 | 3/2 | 3/2 | 19/6 | 9/4 | 0/3 | 5/10 | 1/1 | 0/0 | 1/1 |
| 10/28/2022 | Pittsburgh | 1-1 | 1/1 | 1/1 | 18/21 | 10/10 | 4/4 | 9/4 | 3/2 | 0/1 | 1/4 |
| Totals | | 30-20 | 30/20 | 27/15 | 225/168 | 88/67 | 80/58 | 162/193 | 23/42 | 0/2 | 42/22 |

Note: Game totals are displayed in the format TEAM/OPPONENT for each category

2021 GAME-BY-GAME COMPARISON



2021-22 Notre Dame Men's Soccer
Team Game-by-Game Comparison
All games

Page 1/1
as of Aug 22, 2022

| Date | Opponent | Score | Goals | Assists | Shots | On Goal | Corners | Fouls | YC | RC | Offsides |
|---------------|-------------------|--------------|--------------|--------------|----------------|---------------|----------------|----------------|--------------|------------|--------------|
| 08/27/2021 | Indiana | 2-3 | 2/3 | 0/0 | 16/10 | 6/4 | 8/1 | 14/7 | 2/0 | 0/0 | 2/0 |
| 08/30/2021 | NIU | 2-0 | 2/0 | 2/0 | 18/12 | 7/5 | 8/4 | 16/9 | 3/3 | 0/0 | 4/2 |
| 09/03/2021 | Kentucky | 0-1 | 0/1 | 0/2 | 6/13 | 0/5 | 6/1 | 18/14 | 2/3 | 0/0 | 2/1 |
| 09/10/2021 | Boston College | 1-1 | 1/1 | 1/1 | 7/13 | 4/3 | 4/9 | 10/15 | 0/2 | 1/0 | 1/3 |
| 09/14/2021 | Michigan St. | 3-4 | 3/4 | 3/5 | 11/10 | 5/5 | 4/6 | 12/12 | 1/0 | 0/0 | 3/0 |
| 09/17/2021 | NC State | 1-0 | 1/0 | 1/0 | 10/9 | 2/1 | 5/6 | 14/9 | 1/0 | 0/0 | 2/2 |
| 09/21/2021 | Michigan | 3-1 | 3/1 | 3/1 | 14/12 | 6/3 | 7/6 | 21/14 | 3/0 | 0/0 | 4/2 |
| 09/24/2021 | Virginia Tech | 1-2 | 1/2 | 0/3 | 10/11 | 2/4 | 7/7 | 14/12 | 1/2 | 0/0 | 1/3 |
| 09/28/2021 | Trine | 13-0 | 13/0 | 15/0 | 36/2 | 20/0 | 8/2 | 8/10 | 1/0 | 0/0 | 6/1 |
| 10/01/2021 | Virginia | 2-1 | 2/1 | 2/1 | 16/4 | 8/1 | 9/2 | 10/14 | 5/1 | 0/0 | 1/0 |
| 10/05/2021 | Purdue Fort Wayne | 4-0 | 4/0 | 5/0 | 19/7 | 7/2 | 3/2 | 10/14 | 0/0 | 0/0 | 0/0 |
| 10/09/2021 | Clemson | 2-0 | 2/0 | 2/0 | 8/14 | 3/2 | 6/8 | 16/12 | 4/1 | 0/0 | 1/1 |
| 10/16/2021 | Pittsburgh | 1-0 | 1/0 | 0/0 | 14/5 | 5/1 | 6/3 | 10/11 | 1/1 | 0/0 | 7/3 |
| 10/19/2021 | UIC | 3-0 | 3/0 | 2/0 | 14/12 | 5/5 | 3/6 | 13/15 | 3/1 | 0/0 | 1/0 |
| 10/22/2021 | Duke | 1-1 | 1/1 | 1/2 | 11/7 | 5/3 | 5/5 | 13/17 | 1/3 | 0/0 | 3/2 |
| 10/29/2021 | North Carolina | 1-3 | 1/3 | 0/4 | 3/11 | 2/7 | 2/5 | 10/12 | 1/1 | 0/0 | 2/0 |
| 11/03/2021 | NC State | 1-0 | 1/0 | 0/0 | 11/6 | 3/3 | 5/2 | 7/11 | 2/0 | 0/0 | 1/0 |
| 11/07/2021 | Louisville | 0-0 | 0/0 | 0/0 | 13/8 | 5/1 | 5/5 | 10/18 | 0/2 | 0/0 | 4/0 |
| 11/10/2021 | Pittsburgh | 2-0 | 2/0 | 2/0 | 10/17 | 4/3 | 3/17 | 14/12 | 3/1 | 0/0 | 3/0 |
| 11/14/2021 | Duke | 2-0 | 2/0 | 0/0 | 11/13 | 7/1 | 4/8 | 13/14 | 1/2 | 0/0 | 2/0 |
| 11/21/2021 | Villanova | 3-0 | 3/0 | 1/0 | 15/9 | 8/3 | 11/6 | 10/11 | 2/2 | 0/1 | 0/0 |
| 11/28/2021 | Wake Forest | 2-0 | 2/0 | 3/0 | 12/12 | 4/1 | 2/6 | 12/10 | 1/2 | 0/0 | 3/0 |
| 12/04/2021 | Pittsburgh | 1-1 | 1/1 | 1/1 | 16/13 | 5/6 | 5/3 | 11/14 | 2/1 | 0/0 | 4/0 |
| 12/10/2021 | Clemson | 1-1 | 1/1 | 0/0 | 14/7 | 4/3 | 4/3 | 21/14 | 1/1 | 0/0 | 1/1 |
| Totals | | 52-19 | 52/19 | 44/20 | 315/237 | 127/72 | 130/123 | 307/301 | 41/29 | 1/1 | 58/21 |



CAREER STATISTICS



Notre Dame Men's Soccer
Individual Career Summaries
All games

Page 1/11
as of Oct 31, 2022

ACOSTA, Mateo

| SEASON | TEAM | GP-GS | Min. | G | A | Pts | Shot | Shot% | SOG | SOG% | GW | PK-Att |
|--------------|------|--------------|--------------|----------|----------|----------|----------|-------------|----------|--------------|----------|--------------|
| 2022-23 | ND | 1 - 0 | 61:33 | 0 | 0 | 0 | 1 | .000 | 1 | 1.000 | 0 | 0 - 0 |
| TOTAL | | 1 - 0 | 61:33 | 0 | 0 | 0 | 1 | .000 | 1 | 1.000 | 0 | 0 - 0 |

Single Game Highs

| Statistic | Value |
|-----------|-------------------------|
| Shots | 1 vs Kalamazoo 09/27/22 |

BAFFOUR, Kk

| SEASON | TEAM | GP-GS | Min. | G | A | Pts | Shot | Shot% | SOG | SOG% | GW | PK-Att |
|--------------|------|---------------|---------------|----------|----------|----------|-----------|-------------|----------|-------------|----------|--------------|
| 2022-23 | ND | 15 - 8 | 679:16 | 2 | 3 | 7 | 18 | .111 | 6 | .333 | 1 | 0 - 0 |
| TOTAL | | 15 - 8 | 679:16 | 2 | 3 | 7 | 18 | .111 | 6 | .333 | 1 | 0 - 0 |

Single Game Highs

| Statistic | Value |
|-----------|---|
| Points | 4 vs Kalamazoo 09/27/22 |
| Goals | 1 at Virginia 09/16/22, vs Kalamazoo 09/27/22 |
| Assists | 2 vs Kalamazoo 09/27/22 |
| Shots | 4 vs Boston College 09/30/22 |

BOATENG, Daniel

| SEASON | TEAM | GP-GS | Min. | G | A | Pts | Shot | Shot% | SOG | SOG% | GW | PK-Att |
|--------------|------|--------------|--------------|----------|----------|----------|----------|-------------|----------|-------------|----------|--------------|
| 2022-23 | ND | 1 - 0 | 45:00 | 0 | 0 | 0 | 0 | .000 | 0 | .000 | 0 | 0 - 0 |
| TOTAL | | 1 - 0 | 45:00 | 0 | 0 | 0 | 0 | .000 | 0 | .000 | 0 | 0 - 0 |

CAREER STATISTICS

BONEAU, Bryce

| SEASON | TEAM | GP-GS | Min. | G | A | Pts | Shot | Shot% | SOG | SOG% | GW | PK-Att |
|--------------|------|----------------|----------------|----------|----------|----------|-----------|-------------|----------|-------------|----------|--------------|
| 2022-23 | ND | 16 - 16 | 1163:03 | 0 | 3 | 3 | 15 | .000 | 3 | .200 | 0 | 0 - 0 |
| TOTAL | | 16 - 16 | 1163:03 | 0 | 3 | 3 | 15 | .000 | 3 | .200 | 0 | 0 - 0 |

Single Game Highs

| Statistic | Value | |
|-----------|-------|--------------------------|
| Points | 2 | at Michigan St. 08/29/22 |
| Assists | 2 | at Michigan St. 08/29/22 |
| Shots | 3 | at Michigan St. 08/29/22 |

BORSO, Wyatt

| SEASON | TEAM | GP-GS | Min. | G | A | Pts | Shot | Shot% | SOG | SOG% | GW | PK-Att |
|--------------|------|----------------|---------------|----------|----------|----------|-----------|-------------|----------|-------------|----------|--------------|
| 2022-23 | ND | 16 - 11 | 860:34 | 2 | 1 | 5 | 23 | .087 | 9 | .391 | 1 | 0 - 0 |
| TOTAL | | 16 - 11 | 860:34 | 2 | 1 | 5 | 23 | .087 | 9 | .391 | 1 | 0 - 0 |

Single Game Highs

| Statistic | Value | |
|-----------|-------|---|
| Points | 2 | vs Boston College 09/30/22, vs Kalamazoo 09/27/22 |
| Goals | 1 | vs Boston College 09/30/22, vs Kalamazoo 09/27/22 |
| Assists | 1 | vs Michigan 10/25/22 |
| Shots | 3 | 4 times |

BUJOUVES, Pj

| SEASON | TEAM | GP-GS | Min. | G | A | Pts | Shot | Shot% | SOG | SOG% | GW | PK-Att |
|--------------|------|--------------|--------------|----------|----------|----------|----------|-------------|----------|-------------|----------|--------------|
| 2021-22 | ND | 1 - 0 | 32:45 | 1 | 1 | 3 | 4 | .250 | 2 | .500 | 0 | 0 - 0 |
| 2022-23 | ND | 2 - 0 | 48:07 | 0 | 0 | 0 | 2 | .000 | 0 | .000 | 0 | 0 - 0 |
| TOTAL | | 3 - 0 | 80:52 | 1 | 1 | 3 | 6 | .167 | 2 | .333 | 0 | 0 - 0 |

Single Game Highs

| Statistic | Value | |
|-----------|-------|-------------------|
| Points | 3 | vs Trine 09/28/21 |
| Goals | 1 | vs Trine 09/28/21 |
| Assists | 1 | vs Trine 09/28/21 |
| Shots | 4 | vs Trine 09/28/21 |

CAREER STATISTICS

BURNS, Paddy

| SEASON | TEAM | GP-GS | Min. | G | A | Pts | Shot | Shot% | SOG | SOG% | GW | PK-Att |
|--------------|------|----------------|----------------|----------|----------|-----------|-----------|-------------|-----------|-------------|----------|--------------|
| 2020-21 | ND | 17 - 13 | 1221:41 | 0 | 1 | 1 | 6 | .000 | 0 | .000 | 0 | 0 - 0 |
| 2021-22 | ND | 24 - 24 | 2173:58 | 3 | 5 | 11 | 17 | .176 | 8 | .471 | 0 | 0 - 0 |
| 2022-23 | ND | 16 - 16 | 1326:27 | 5 | 0 | 10 | 27 | .185 | 9 | .333 | 2 | 1 - 2 |
| TOTAL | | 57 - 53 | 4722:06 | 8 | 6 | 22 | 50 | .160 | 17 | .340 | 2 | 1 - 2 |

Single Game Highs

| Statistic | Value | |
|-----------|-------|-------------------------|
| Points | 4 | vs Chicago St. 09/21/22 |
| Goals | 2 | vs Chicago St. 09/21/22 |
| Assists | 2 | vs Trine 09/28/21 |
| Shots | 5 | vs Chicago St. 09/21/22 |

DOWD, Bryan

| SEASON | TEAM | GP-GS | Min. | G | A | Pts | Shot | Shot% | SOG | SOG% | GW | PK-Att |
|--------------|------|----------------|----------------|----------|----------|----------|----------|-------------|----------|-------------|----------|--------------|
| 2020-21 | ND | 4 - 3 | 314:31 | 0 | 0 | 0 | 0 | .000 | 0 | .000 | 0 | 0 - 0 |
| 2021-22 | ND | 21 - 21 | 2015:35 | 0 | 0 | 0 | 0 | .000 | 0 | .000 | 0 | 0 - 0 |
| 2022-23 | ND | 16 - 16 | 1395:00 | 0 | 1 | 1 | 0 | .000 | 0 | .000 | 0 | 0 - 0 |
| TOTAL | | 41 - 40 | 3725:06 | 0 | 1 | 1 | 0 | .000 | 0 | .000 | 0 | 0 - 0 |

| SEASON | TEAM | GP-GS | Minutes | GA | GAAvg | Saves | Save% | W | L | T | SHO/CBO |
|--------------|------|----------------|----------------|-----------|-------------|-----------|-------------|-----------|-----------|----------|-------------|
| 2020-21 | ND | 4 - 3 | 314:31 | 4 | 1.15 | 11 | .733 | 1 | 2 | 0 | 1/0 |
| 2021-22 | ND | 21 - 21 | 2015:35 | 19 | 0.85 | 46 | .708 | 11 | 5 | 5 | 10/0 |
| 2022-23 | ND | 16 - 16 | 1395:00 | 20 | 1.3 | 41 | .672 | 8 | 6 | 2 | 2/1 |
| TOTAL | | 41 - 40 | 3725:06 | 43 | 1.04 | 98 | .695 | 20 | 13 | 7 | 13/1 |

Single Game Highs

| Statistic | Value | |
|-----------|-------|--|
| Points | 1 | vs Boston College 09/30/22 |
| Assists | 1 | vs Boston College 09/30/22 |
| Saves | 7 | at Syracuse 09/10/22, at Virginia 09/16/22, at Pittsburgh 10/28/22 |

EGAN, Liam

| SEASON | TEAM | GP-GS | Min. | G | A | Pts | Shot | Shot% | SOG | SOG% | GW | PK-Att |
|--------------|------|--------------|--------------|----------|----------|----------|----------|-------------|----------|-------------|----------|--------------|
| 2022-23 | ND | 1 - 0 | 45:00 | 0 | 0 | 0 | 0 | .000 | 0 | .000 | 0 | 0 - 0 |
| TOTAL | | 1 - 0 | 45:00 | 0 | 0 | 0 | 0 | .000 | 0 | .000 | 0 | 0 - 0 |

| SEASON | TEAM | GP-GS | Minutes | GA | GAAvg | Saves | Save% | W | L | T | SHO/CBO |
|---------|------|-------|---------|----|-------|-------|-------|---|---|---|---------|
| 2022-23 | ND | 1 - 0 | 45:00 | 0 | 0 | 1 | 1.000 | 0 | 0 | 0 | 0/1 |



CAREER STATISTICS

FERGUSON, Mitch

| SEASON | TEAM | GP-GS | Min. | G | A | Pts | Shot | Shot% | SOG | SOG% | GW | PK-Att |
|--------------|------|---------------|---------------|----------|----------|----------|----------|-------------|----------|-------------|----------|--------------|
| 2022-23 | ND | 16 - 4 | 842:08 | 1 | 2 | 4 | 9 | .111 | 3 | .333 | 0 | 0 - 0 |
| TOTAL | | 16 - 4 | 842:08 | 1 | 2 | 4 | 9 | .111 | 3 | .333 | 0 | 0 - 0 |

Single Game Highs

| Statistic | Value | |
|-----------|-------|---|
| Points | 3 | at UIC 10/18/22 |
| Goals | 1 | at UIC 10/18/22 |
| Assists | 1 | at UIC 10/18/22, vs Kalamazoo 09/27/22 |
| Shots | 3 | at Michigan St. 08/29/22, at UIC 10/18/22 |

GENENBACHER, Kyle

| SEASON | TEAM | GP-GS | Min. | G | A | Pts | Shot | Shot% | SOG | SOG% | GW | PK-Att |
|--------------|------|----------------|----------------|----------|----------|----------|-----------|-------------|----------|-------------|----------|--------------|
| 2021-22 | ND | 23 - 2 | 803:34 | 0 | 1 | 1 | 4 | .000 | 2 | .500 | 0 | 0 - 0 |
| 2022-23 | ND | 16 - 12 | 1010:25 | 2 | 3 | 7 | 9 | .222 | 4 | .444 | 0 | 0 - 0 |
| TOTAL | | 39 - 14 | 1813:59 | 2 | 4 | 8 | 13 | .154 | 6 | .462 | 0 | 0 - 0 |

Single Game Highs

| Statistic | Value | |
|-----------|-------|---|
| Points | 2 | vs Seattle U 08/25/22, at UIC 10/18/22 |
| Goals | 1 | vs Seattle U 08/25/22, at UIC 10/18/22 |
| Assists | 1 | 4 times |
| Shots | 2 | at Michigan St. 08/29/22, at UIC 10/18/22 |

GIACOBELLO, Ben

| SEASON | TEAM | GP-GS | Min. | G | A | Pts | Shot | Shot% | SOG | SOG% | GW | PK-Att |
|--------------|------|----------------|----------------|----------|----------|-----------|-----------|-------------|-----------|-------------|----------|--------------|
| 2019-20 | ND | 19 - 1 | 451:40 | 2 | 1 | 5 | 6 | .333 | 4 | .667 | 0 | 0 - 0 |
| 2020-21 | ND | 12 - 9 | 710:01 | 1 | 2 | 4 | 8 | .125 | 3 | .375 | 0 | 0 - 0 |
| 2021-22 | ND | 24 - 22 | 2072:45 | 1 | 3 | 5 | 10 | .100 | 1 | .100 | 0 | 0 - 0 |
| 2022-23 | ND | 13 - 13 | 987:40 | 1 | 0 | 2 | 10 | .100 | 4 | .400 | 0 | 0 - 0 |
| TOTAL | | 68 - 45 | 4222:06 | 5 | 6 | 16 | 34 | .147 | 12 | .353 | 0 | 0 - 0 |

Single Game Highs

| Statistic | Value | |
|-----------|-------|------------------------|
| Points | 4 | vs Louisville 11/06/20 |
| Goals | 1 | 5 times |
| Assists | 2 | vs Louisville 11/06/20 |
| Shots | 3 | at Pittsburgh 10/28/22 |

CAREER STATISTICS

GREEN, Sebastian

| SEASON | TEAM | GP-GS | Min. | G | A | Pts | Shot | Shot% | SOG | SOG% | GW | PK-Att |
|--------------|------|---------------|---------------|----------|----------|----------|----------|-------------|----------|-------------|----------|--------------|
| 2022-23 | ND | 16 - 5 | 661:45 | 1 | 0 | 2 | 4 | .250 | 2 | .500 | 0 | 0 - 0 |
| TOTAL | | 16 - 5 | 661:45 | 1 | 0 | 2 | 4 | .250 | 2 | .500 | 0 | 0 - 0 |

Single Game Highs

| Statistic | Value | |
|-----------|-------|--------------------------|
| Points | 2 | at Michigan St. 08/29/22 |
| Goals | 1 | at Michigan St. 08/29/22 |
| Shots | 1 | 4 times |

HILL, Aaron

| SEASON | TEAM | GP-GS | Min. | G | A | Pts | Shot | Shot% | SOG | SOG% | GW | PK-Att |
|--------------|------|--------------|--------------|----------|----------|----------|----------|-------------|----------|-------------|----------|--------------|
| 2021-22 | ND | 1 - 0 | 37:18 | 0 | 0 | 0 | 2 | .000 | 0 | .000 | 0 | 0 - 0 |
| 2022-23 | ND | 1 - 0 | 45:00 | 1 | 0 | 2 | 1 | 1.000 | 1 | 1.000 | 0 | 0 - 0 |
| TOTAL | | 2 - 0 | 82:18 | 1 | 0 | 2 | 3 | .333 | 1 | .333 | 0 | 0 - 0 |

Single Game Highs

| Statistic | Value | |
|-----------|-------|-----------------------|
| Points | 2 | vs Kalamazoo 09/27/22 |
| Goals | 1 | vs Kalamazoo 09/27/22 |
| Shots | 2 | vs Trine 09/28/21 |

LEGENDRE, Nicholas

| SEASON | TEAM | GP-GS | Min. | G | A | Pts | Shot | Shot% | SOG | SOG% | GW | PK-Att |
|--------------|------|--------------|---------------|----------|----------|----------|----------|-------------|----------|--------------|----------|--------------|
| 2022-23 | ND | 7 - 0 | 105:50 | 1 | 1 | 3 | 2 | .500 | 2 | 1.000 | 0 | 0 - 0 |
| TOTAL | | 7 - 0 | 105:50 | 1 | 1 | 3 | 2 | .500 | 2 | 1.000 | 0 | 0 - 0 |

Single Game Highs

| Statistic | Value | |
|-----------|-------|-----------------------|
| Points | 3 | vs Kalamazoo 09/27/22 |
| Goals | 1 | vs Kalamazoo 09/27/22 |
| Assists | 1 | vs Kalamazoo 09/27/22 |
| Shots | 2 | vs Kalamazoo 09/27/22 |

CAREER STATISTICS

MAYER, Reese

| SEASON | TEAM | GP-GS | Min. | G | A | Pts | Shot | Shot% | SOG | SOG% | GW | PK-Att |
|--------------|------|----------------|----------------|----------|----------|----------|-----------|-------------|----------|-------------|----------|--------------|
| 2020-21 | ND | 15 - 3 | 538:52 | 1 | 1 | 3 | 2 | .500 | 1 | .500 | 0 | 0 - 0 |
| 2021-22 | ND | 24 - 3 | 1273:45 | 1 | 2 | 4 | 6 | .167 | 1 | .167 | 1 | 0 - 0 |
| 2022-23 | ND | 16 - 14 | 981:30 | 0 | 0 | 0 | 10 | .000 | 3 | .300 | 0 | 0 - 1 |
| TOTAL | | 55 - 20 | 2794:07 | 2 | 3 | 7 | 18 | .111 | 5 | .278 | 1 | 0 - 1 |

Single Game Highs

| Statistic | Value | |
|-----------|-------|---|
| Points | 2 | vs North Carolina 03/27/21, vs UIC 10/19/21 |
| Goals | 1 | vs North Carolina 03/27/21, vs UIC 10/19/21 |
| Assists | 1 | vs Wake Forest 03/20/21, vs Trine 09/28/21, vs Purdue Fort Wayne 10/05/21 |
| Shots | 2 | vs Seattle U 08/25/22, at Michigan St. 08/29/22, vs DePaul 09/06/22 |

MCLAUGHLIN, Matthew

| SEASON | TEAM | GP-GS | Min. | G | A | Pts | Shot | Shot% | SOG | SOG% | GW | PK-Att |
|--------------|------|--------------|---------------|----------|----------|----------|----------|-------------|----------|-------------|----------|--------------|
| 2020-21 | ND | 4 - 0 | 50:14 | 0 | 0 | 0 | 0 | .000 | 0 | .000 | 0 | 0 - 0 |
| 2021-22 | ND | 2 - 0 | 41:08 | 0 | 3 | 3 | 2 | .000 | 1 | .500 | 0 | 0 - 0 |
| 2022-23 | ND | 1 - 0 | 58:18 | 0 | 0 | 0 | 1 | .000 | 0 | .000 | 0 | 0 - 0 |
| TOTAL | | 7 - 0 | 149:40 | 0 | 3 | 3 | 3 | .000 | 1 | .333 | 0 | 0 - 0 |

Single Game Highs

| Statistic | Value | |
|-----------|-------|---|
| Points | 3 | vs Trine 09/28/21 |
| Assists | 3 | vs Trine 09/28/21 |
| Shots | 1 | vs Trine 09/28/21, vs Purdue Fort Wayne 10/05/21, vs Kalamazoo 09/27/22 |

NTO, Eno

| SEASON | TEAM | GP-GS | Min. | G | A | Pts | Shot | Shot% | SOG | SOG% | GW | PK-Att |
|--------------|------|----------------|----------------|----------|----------|-----------|-----------|-------------|-----------|-------------|----------|--------------|
| 2021-22 | ND | 19 - 12 | 660:44 | 5 | 0 | 10 | 13 | .385 | 7 | .538 | 1 | 0 - 0 |
| 2022-23 | ND | 16 - 5 | 597:46 | 2 | 3 | 7 | 12 | .167 | 8 | .667 | 1 | 0 - 0 |
| TOTAL | | 35 - 17 | 1258:30 | 7 | 3 | 17 | 25 | .280 | 15 | .600 | 2 | 0 - 0 |

Single Game Highs

| Statistic | Value | |
|-----------|-------|--|
| Points | 6 | vs Trine 09/28/21 |
| Goals | 3 | vs Trine 09/28/21 |
| Assists | 1 | vs Seattle U 08/25/22, vs Chicago St. 09/21/22, at Pittsburgh 10/28/22 |
| Shots | 3 | vs Trine 09/28/21 |

CAREER STATISTICS

O'BRIEN, Ethan

| SEASON | TEAM | GP-GS | Min. | G | A | Pts | Shot | Shot% | SOG | SOG% | GW | PK-Att |
|--------------|------|----------------|----------------|----------|----------|----------|-----------|-------------|----------|-------------|----------|--------------|
| 2020-21 | ND | 11 - 8 | 645:39 | 0 | 0 | 0 | 1 | .000 | 0 | .000 | 0 | 0 - 0 |
| 2021-22 | ND | 20 - 12 | 1082:43 | 2 | 5 | 9 | 13 | .154 | 2 | .154 | 0 | 0 - 0 |
| TOTAL | | 31 - 20 | 1728:22 | 2 | 5 | 9 | 14 | .143 | 2 | .143 | 0 | 0 - 0 |

Single Game Highs

| Statistic | Value | |
|-----------|-------|---|
| Points | 2 | vs Trine 09/28/21, at North Carolina 10/29/21 |
| Goals | 1 | vs Trine 09/28/21, at North Carolina 10/29/21 |
| Assists | 1 | 5 times |
| Shots | 2 | vs Trine 09/28/21, vs Virginia 10/01/21, vs Pittsburgh 12/04/21 |

PELLEGRINO, Michael

| SEASON | TEAM | GP-GS | Min. | G | A | Pts | Shot | Shot% | SOG | SOG% | GW | PK-Att |
|--------------|------|----------------|----------------|----------|----------|----------|-----------|-------------|----------|-------------|----------|--------------|
| 2019-20 | ND | 19 - 10 | 1082:48 | 1 | 0 | 2 | 12 | .083 | 3 | .250 | 1 | 0 - 0 |
| 2020-21 | ND | 16 - 14 | 1185:35 | 1 | 0 | 2 | 15 | .067 | 3 | .200 | 0 | 0 - 0 |
| 2021-22 | ND | 14 - 9 | 536:25 | 0 | 1 | 1 | 4 | .000 | 1 | .250 | 0 | 0 - 0 |
| TOTAL | | 49 - 33 | 2804:49 | 2 | 1 | 5 | 31 | .065 | 7 | .226 | 1 | 0 - 0 |

Single Game Highs

| Statistic | Value | |
|-----------|-------|--|
| Points | 2 | at Michigan St. 09/24/19, vs Pittsburgh 09/26/20 |
| Goals | 1 | at Michigan St. 09/24/19, vs Pittsburgh 09/26/20 |
| Assists | 1 | vs Virginia 10/01/21 |
| Shots | 4 | vs Virginia Tech 04/09/21 |

RADIVOJSA, Matthew

| SEASON | TEAM | GP-GS | Min. | G | A | Pts | Shot | Shot% | SOG | SOG% | GW | PK-Att |
|--------------|------|---------------|----------------|----------|----------|----------|-----------|-------------|----------|-------------|----------|--------------|
| 2020-21 | ND | 17 - 8 | 900:19 | 1 | 0 | 2 | 17 | .059 | 5 | .294 | 1 | 0 - 0 |
| 2022-23 | ND | 15 - 1 | 338:19 | 0 | 2 | 2 | 5 | .000 | 1 | .200 | 0 | 0 - 0 |
| TOTAL | | 32 - 9 | 1238:38 | 1 | 2 | 4 | 22 | .045 | 6 | .273 | 1 | 0 - 0 |

Single Game Highs

| Statistic | Value | |
|-----------|-------|--|
| Points | 2 | at Butler 02/27/21 |
| Goals | 1 | at Butler 02/27/21 |
| Assists | 1 | vs Chicago St. 09/21/22, vs Kalamazoo 09/27/22 |
| Shots | 4 | vs Kentucky 09/17/20 |

CAREER STATISTICS

RAMSEY, Josh

| SEASON | TEAM | GP-GS | Min. | G | A | Pts | Shot | Shot% | SOG | SOG% | GW | PK-Att |
|--------------|------|----------------|----------------|----------|----------|----------|----------|-------------|----------|-------------|----------|--------------|
| 2021-22 | ND | 24 - 23 | 2058:43 | 0 | 1 | 1 | 0 | .000 | 0 | .000 | 0 | 0 - 0 |
| 2022-23 | ND | 16 - 16 | 1370:47 | 0 | 0 | 0 | 1 | .000 | 0 | .000 | 0 | 0 - 0 |
| TOTAL | | 40 - 39 | 3429:30 | 0 | 1 | 1 | 1 | .000 | 0 | .000 | 0 | 0 - 0 |

Single Game Highs

| Statistic | Value | |
|-----------|-------|----------------------------|
| Points | 1 | at Boston College 09/10/21 |
| Assists | 1 | at Boston College 09/10/21 |
| Shots | 1 | vs Louisville 10/08/22 |

ROOU, Matthew

| SEASON | TEAM | GP-GS | Min. | G | A | Pts | Shot | Shot% | SOG | SOG% | GW | PK-Att |
|--------------|------|----------------|----------------|-----------|----------|-----------|-----------|-------------|-----------|-------------|----------|--------------|
| 2021-22 | ND | 24 - 13 | 1453:33 | 7 | 3 | 17 | 31 | .226 | 18 | .581 | 0 | 0 - 0 |
| 2022-23 | ND | 16 - 15 | 1097:59 | 4 | 4 | 12 | 35 | .114 | 15 | .429 | 1 | 0 - 0 |
| TOTAL | | 40 - 28 | 2551:32 | 11 | 7 | 29 | 66 | .167 | 33 | .500 | 1 | 0 - 0 |

Single Game Highs

| Statistic | Value | |
|-----------|-------|---|
| Points | 4 | vs Trine 09/28/21, at UIC 10/18/22 |
| Goals | 2 | at UIC 10/18/22 |
| Assists | 2 | vs Trine 09/28/21, vs Michigan 10/25/22 |
| Shots | 6 | vs Michigan 10/25/22 |

ROSSI, Michael

| SEASON | TEAM | GP-GS | Min. | G | A | Pts | Shot | Shot% | SOG | SOG% | GW | PK-Att |
|--------------|------|---------------|---------------|----------|----------|----------|----------|-------------|----------|-------------|----------|--------------|
| 2021-22 | ND | 7 - 0 | 83:54 | 2 | 2 | 6 | 4 | .500 | 3 | .750 | 0 | 0 - 0 |
| 2022-23 | ND | 4 - 0 | 42:19 | 0 | 0 | 0 | 0 | .000 | 0 | .000 | 0 | 0 - 0 |
| TOTAL | | 11 - 0 | 126:13 | 2 | 2 | 6 | 4 | .500 | 3 | .750 | 0 | 0 - 0 |

Single Game Highs

| Statistic | Value | |
|-----------|-------|-------------------|
| Points | 6 | vs Trine 09/28/21 |
| Goals | 2 | vs Trine 09/28/21 |
| Assists | 2 | vs Trine 09/28/21 |
| Shots | 4 | vs Trine 09/28/21 |

CAREER STATISTICS

RUSSO, Daniel

| SEASON | TEAM | GP-GS | Min. | G | A | Pts | Shot | Shot% | SOG | SOG% | GW | PK-Att |
|--------------|------|----------------|----------------|-----------|----------|-----------|-----------|-------------|-----------|-------------|----------|--------------|
| 2020-21 | ND | 13 - 5 | 525:00 | 1 | 1 | 3 | 4 | .250 | 2 | .500 | 1 | 0 - 0 |
| 2021-22 | ND | 24 - 11 | 1253:26 | 3 | 4 | 10 | 28 | .107 | 10 | .357 | 2 | 0 - 0 |
| 2022-23 | ND | 16 - 10 | 835:01 | 6 | 4 | 16 | 34 | .176 | 15 | .441 | 1 | 1 - 1 |
| TOTAL | | 53 - 26 | 2613:27 | 10 | 9 | 29 | 66 | .152 | 27 | .409 | 4 | 1 - 1 |

Single Game Highs

| Statistic | Value | |
|-----------|-------|--|
| Points | 6 | vs Michigan 10/25/22 |
| Goals | 3 | vs Michigan 10/25/22 |
| Assists | 2 | at Michigan 09/21/21 |
| Shots | 6 | at Michigan St. 08/29/22, vs Michigan 10/25/22 |

SALVINO, Alex

| SEASON | TEAM | GP-GS | Min. | G | A | Pts | Shot | Shot% | SOG | SOG% | GW | PK-Att |
|--------------|------|--------------|--------------|----------|----------|----------|----------|-------------|----------|-------------|----------|--------------|
| 2021-22 | ND | 1 - 0 | 32:45 | 1 | 1 | 3 | 3 | .333 | 1 | .333 | 0 | 0 - 0 |
| 2022-23 | ND | 1 - 0 | 45:00 | 0 | 0 | 0 | 0 | .000 | 0 | .000 | 0 | 0 - 0 |
| TOTAL | | 2 - 0 | 77:45 | 1 | 1 | 3 | 3 | .333 | 1 | .333 | 0 | 0 - 0 |

Single Game Highs

| Statistic | Value | |
|-----------|-------|-------------------|
| Points | 3 | vs Trine 09/28/21 |
| Goals | 1 | vs Trine 09/28/21 |
| Assists | 1 | vs Trine 09/28/21 |
| Shots | 3 | vs Trine 09/28/21 |

SELLERS IV, Cleveland

| SEASON | TEAM | GP-GS | Min. | G | A | Pts | Shot | Shot% | SOG | SOG% | GW | PK-Att |
|--------------|------|--------------|--------------|----------|----------|----------|----------|-------------|----------|-------------|----------|--------------|
| 2022-23 | ND | 1 - 0 | 45:00 | 0 | 0 | 0 | 0 | .000 | 0 | .000 | 0 | 0 - 0 |
| TOTAL | | 1 - 0 | 45:00 | 0 | 0 | 0 | 0 | .000 | 0 | .000 | 0 | 0 - 0 |

CAREER STATISTICS

WILLIAMS, Maurice

| SEASON | TEAM | GP-GS | Min. | G | A | Pts | Shot | Shot% | SOG | SOG% | GW | PK-Att |
|---------------------|------|----------------|----------------|----------|----------|-----------|-----------|-------------|-----------|-------------|----------|--------------|
| 2019-20 | UC | 16 - 15 | 1318:24 | 0 | 0 | 0 | 7 | .000 | 4 | .571 | 0 | 0 - 0 |
| 2020-21 | SHU | 15 - 14 | 1288:22 | 4 | 1 | 9 | 9 | .444 | 6 | .667 | 2 | 0 - 0 |
| 2021-22 | SHU | 17 - 13 | 1210:30 | 0 | 2 | 2 | 10 | .000 | 1 | .100 | 0 | 0 - 0 |
| 2022-23 | ND | 14 - 14 | 1139:13 | 0 | 0 | 0 | 6 | .000 | 2 | .333 | 0 | 0 - 0 |
| TOTAL FOR ND | | 14 - 14 | 1139:13 | 0 | 0 | 0 | 6 | .000 | 2 | .333 | 0 | 0 - 0 |
| TOTAL | | 62 - 56 | 4956:29 | 4 | 3 | 11 | 32 | .125 | 13 | .406 | 2 | 0 - 0 |

Single Game Highs

| Statistic | Value | |
|-----------|-------|--|
| Points | 4 | vs Marquette 04/15/21 |
| Goals | 2 | vs Marquette 04/15/21 |
| Assists | 2 | vs Virginia Tech 09/06/21 |
| Shots | 3 | vs Cleveland St. 10/09/19, vs Marquette 09/24/21 |

2022 INDIVIDUAL GAME-BY-GAME

#2 FERGUSON, Mitch

| Date | Opponent | SCORE | GP | GS | G | A | PTS | SH | SH% | SOG | SOG% | GW | PK-ATT | YC | RC | MIN |
|---------------|-----------------|--------------|-----------|----------|----------|----------|----------|----------|-------------|----------|-------------|----------|------------|----------|----------|------------|
| 08/25/2022 | Seattle U | 1-3 | * | | 0 | 0 | 0 | 0 | .000 | 0 | .000 | 0 | 0-0 | 1 | 0 | 27 |
| 08/29/2022 | at Michigan St. | 3-2 | * | | 0 | 0 | 0 | 3 | .000 | 0 | .000 | 0 | 0-0 | 0 | 0 | 53 |
| 09/06/2022 | DePaul | 1-1 | * | | 0 | 0 | 0 | 0 | .000 | 0 | .000 | 0 | 0-0 | 0 | 0 | 44 |
| 09/10/2022 | at Syracuse | 0-1 | * | | 0 | 0 | 0 | 0 | .000 | 0 | .000 | 0 | 0-0 | 0 | 0 | 54 |
| 09/16/2022 | at Virginia | 2-1 | * | | 0 | 0 | 0 | 0 | .000 | 0 | .000 | 0 | 0-0 | 0 | 0 | 51 |
| 09/21/2022 | Chicago St. | 4-0 | * | | 0 | 0 | 0 | 1 | .000 | 0 | .000 | 0 | 0-0 | 0 | 0 | 55 |
| 09/24/2022 | North Carolina | 0-1 | * | | 0 | 0 | 0 | 1 | .000 | 0 | .000 | 0 | 0-0 | 0 | 0 | 34 |
| 09/27/2022 | Kalamazoo | 8-0 | * | | 0 | 1 | 1 | 0 | .000 | 0 | .000 | 0 | 0-0 | 0 | 0 | 40 |
| 09/30/2022 | Boston College | 2-1 | * | | 0 | 0 | 0 | 0 | .000 | 0 | .000 | 0 | 0-0 | 0 | 0 | 43 |
| 10/05/2022 | at Indiana | 0-1 | * | | 0 | 0 | 0 | 0 | .000 | 0 | .000 | 0 | 0-0 | 0 | 0 | 34 |
| 10/08/2022 | Louisville | 0-2 | * | | 0 | 0 | 0 | 0 | .000 | 0 | .000 | 0 | 0-0 | 0 | 0 | 29 |
| 10/14/2022 | at Duke | 0-2 | * | | 0 | 0 | 0 | 1 | .000 | 0 | .000 | 0 | 0-0 | 0 | 0 | 49 |
| 10/18/2022 | at UIC | 4-2 | * | * | 1 | 1 | 3 | 3 | .111 | 3 | .333 | 0 | 0-0 | 0 | 0 | 65 |
| 10/21/2022 | Virginia Tech | 1-0 | * | * | 0 | 0 | 0 | 0 | .111 | 0 | .333 | 0 | 0-0 | 0 | 0 | 90 |
| 10/25/2022 | Michigan | 3-2 | * | * | 0 | 0 | 0 | 0 | .111 | 0 | .333 | 0 | 0-0 | 0 | 0 | 90 |
| 10/28/2022 | at Pittsburgh | 1-1 | * | * | 0 | 0 | 0 | 0 | .111 | 0 | .333 | 0 | 0-0 | 0 | 0 | 90 |
| Totals | | 30-20 | 16 | 4 | 1 | 2 | 4 | 9 | .111 | 3 | .333 | 0 | 0-0 | 1 | 0 | 843 |

Player Averages

| Games Played | Shots per game | Assists per game | Goals per game | Points per game |
|--------------|----------------|------------------|----------------|-----------------|
| 16 | 0.56 | 0.13 | 0.06 | 0.25 |

2022 INDIVIDUAL GAME-BY-GAME

#3 MAYER, Reese

| Date | Opponent | SCORE | GP | GS | G | A | PTS | SH | SH% | SOG | SOG% | GW | PK-ATT | YC | RC | MIN |
|---------------|-----------------|--------------|-----------|-----------|----------|----------|----------|-----------|-------------|----------|-------------|----------|------------|----------|----------|------------|
| 08/25/2022 | Seattle U | 1-3 | * | * | 0 | 0 | 0 | 2 | .000 | 0 | .000 | 0 | 0-0 | 0 | 0 | 76 |
| 08/29/2022 | at Michigan St. | 3-2 | * | * | 0 | 0 | 0 | 2 | .000 | 1 | .250 | 0 | 0-0 | 1 | 0 | 56 |
| 09/06/2022 | DePaul | 1-1 | * | * | 0 | 0 | 0 | 2 | .000 | 0 | .167 | 0 | 0-0 | 0 | 0 | 71 |
| 09/10/2022 | at Syracuse | 0-1 | * | * | 0 | 0 | 0 | 0 | .000 | 0 | .167 | 0 | 0-0 | 0 | 0 | 66 |
| 09/16/2022 | at Virginia | 2-1 | * | * | 0 | 0 | 0 | 1 | .000 | 1 | .286 | 0 | 0-0 | 1 | 0 | 65 |
| 09/21/2022 | Chicago St. | 4-0 | * | * | 0 | 0 | 0 | 1 | .000 | 0 | .250 | 0 | 0-0 | 0 | 0 | 63 |
| 09/24/2022 | North Carolina | 0-1 | * | * | 0 | 0 | 0 | 0 | .000 | 0 | .250 | 0 | 0-0 | 0 | 0 | 70 |
| 09/27/2022 | Kalamazoo | 8-0 | * | * | 0 | 0 | 0 | 0 | .000 | 0 | .250 | 0 | 0-0 | 0 | 0 | 25 |
| 09/30/2022 | Boston College | 2-1 | * | * | 0 | 0 | 0 | 0 | .000 | 0 | .250 | 0 | 0-0 | 0 | 0 | 64 |
| 10/05/2022 | at Indiana | 0-1 | * | * | 0 | 0 | 0 | 0 | .000 | 0 | .250 | 0 | 0-0 | 0 | 0 | 72 |
| 10/08/2022 | Louisville | 0-2 | * | * | 0 | 0 | 0 | 1 | .000 | 0 | .222 | 0 | 0-0 | 0 | 0 | 69 |
| 10/14/2022 | at Duke | 0-2 | * | * | 0 | 0 | 0 | 0 | .000 | 0 | .222 | 0 | 0-0 | 0 | 0 | 65 |
| 10/18/2022 | at UIC | 4-2 | * | | 0 | 0 | 0 | 0 | .000 | 0 | .222 | 0 | 0-0 | 0 | 0 | 44 |
| 10/21/2022 | Virginia Tech | 1-0 | * | | 0 | 0 | 0 | 1 | .000 | 1 | .300 | 0 | 0-1 | 0 | 0 | 68 |
| 10/25/2022 | Michigan | 3-2 | * | * | 0 | 0 | 0 | 0 | .000 | 0 | .300 | 0 | 0-0 | 1 | 0 | 62 |
| 10/28/2022 | at Pittsburgh | 1-1 | * | * | 0 | 0 | 0 | 0 | .000 | 0 | .300 | 0 | 0-0 | 0 | 0 | 53 |
| Totals | | 30-20 | 16 | 14 | 0 | 0 | 0 | 10 | .000 | 3 | .300 | 0 | 0-1 | 3 | 0 | 982 |

Player Averages

| Games Played | Shots per game | Assists per game | Goals per game | Points per game |
|--------------|----------------|------------------|----------------|-----------------|
| 16 | 0.63 | 0.00 | 0.00 | 0.00 |

2022 INDIVIDUAL GAME-BY-GAME

#5 GENENBACHER, Kyle

| Date | Opponent | SCORE | GP | GS | G | A | PTS | SH | SH% | SOG | SOG% | GW | PK-ATT | YC | RC | MIN |
|---------------|-----------------|--------------|-----------|-----------|----------|----------|----------|----------|-------------|----------|-------------|----------|------------|----------|----------|-------------|
| 08/25/2022 | Seattle U | 1-3 | * | * | 1 | 0 | 2 | 1 | 1.000 | 1 | 1.000 | 0 | 0-0 | 0 | 0 | 90 |
| 08/29/2022 | at Michigan St. | 3-2 | * | * | 0 | 1 | 1 | 2 | .333 | 1 | .667 | 0 | 0-0 | 0 | 0 | 90 |
| 09/06/2022 | DePaul | 1-1 | * | * | 0 | 0 | 0 | 1 | .250 | 0 | .500 | 0 | 0-0 | 0 | 0 | 90 |
| 09/10/2022 | at Syracuse | 0-1 | * | * | 0 | 0 | 0 | 0 | .250 | 0 | .500 | 0 | 0-0 | 0 | 0 | 90 |
| 09/16/2022 | at Virginia | 2-1 | * | * | 0 | 0 | 0 | 0 | .250 | 0 | .500 | 0 | 0-0 | 0 | 0 | 78 |
| 09/21/2022 | Chicago St. | 4-0 | * | * | 0 | 0 | 0 | 1 | .200 | 0 | .400 | 0 | 0-0 | 0 | 0 | 55 |
| 09/24/2022 | North Carolina | 0-1 | * | * | 0 | 0 | 0 | 0 | .200 | 0 | .400 | 0 | 0-0 | 0 | 0 | 64 |
| 09/27/2022 | Kalamazoo | 8-0 | * | * | 0 | 1 | 1 | 1 | .167 | 0 | .333 | 0 | 0-0 | 0 | 0 | 25 |
| 09/30/2022 | Boston College | 2-1 | * | * | 0 | 1 | 1 | 0 | .167 | 0 | .333 | 0 | 0-0 | 0 | 0 | 66 |
| 10/05/2022 | at Indiana | 0-1 | * | * | 0 | 0 | 0 | 0 | .167 | 0 | .333 | 0 | 0-0 | 0 | 0 | 73 |
| 10/08/2022 | Louisville | 0-2 | * | * | 0 | 0 | 0 | 1 | .143 | 0 | .286 | 0 | 0-0 | 0 | 0 | 61 |
| 10/14/2022 | at Duke | 0-2 | * | * | 0 | 0 | 0 | 0 | .143 | 0 | .286 | 0 | 0-0 | 0 | 0 | 45 |
| 10/18/2022 | at UIC | 4-2 | * | | 1 | 0 | 2 | 2 | .222 | 2 | .444 | 0 | 0-0 | 1 | 0 | 55 |
| 10/21/2022 | Virginia Tech | 1-0 | * | | 0 | 0 | 0 | 0 | .222 | 0 | .444 | 0 | 0-0 | 0 | 0 | 43 |
| 10/25/2022 | Michigan | 3-2 | * | | 0 | 0 | 0 | 0 | .222 | 0 | .444 | 0 | 0-0 | 0 | 0 | 41 |
| 10/28/2022 | at Pittsburgh | 1-1 | * | | 0 | 0 | 0 | 0 | .222 | 0 | .444 | 0 | 0-0 | 1 | 0 | 51 |
| Totals | | 30-20 | 16 | 12 | 2 | 3 | 7 | 9 | .222 | 4 | .444 | 0 | 0-0 | 2 | 0 | 1011 |

Player Averages

| Games Played | Shots per game | Assists per game | Goals per game | Points per game |
|--------------|----------------|------------------|----------------|-----------------|
| 16 | 0.56 | 0.19 | 0.13 | 0.44 |

2022 INDIVIDUAL GAME-BY-GAME

#8 RADIVOJSA, Matthew

| Date | Opponent | SCORE | GP | GS | G | A | PTS | SH | SH% | SOG | SOG% | GW | PK-ATT | YC | RC | MIN |
|---------------|-----------------|--------------|-----------|----------|----------|----------|----------|----------|-------------|----------|-------------|----------|------------|----------|----------|------------|
| 08/25/2022 | Seattle U | 1-3 | * | | 0 | 0 | 0 | 2 | .000 | 0 | .000 | 0 | 0-0 | 0 | 0 | 36 |
| 08/29/2022 | at Michigan St. | 3-2 | * | | 0 | 0 | 0 | 0 | .000 | 0 | .000 | 0 | 0-0 | 0 | 0 | 38 |
| 09/06/2022 | DePaul | 1-1 | * | * | 0 | 0 | 0 | 0 | .000 | 0 | .000 | 0 | 0-0 | 0 | 0 | 43 |
| 09/10/2022 | at Syracuse | 0-1 | * | | 0 | 0 | 0 | 0 | .000 | 0 | .000 | 0 | 0-0 | 0 | 0 | 14 |
| 09/16/2022 | at Virginia | 2-1 | * | | 0 | 0 | 0 | 0 | .000 | 0 | .000 | 0 | 0-0 | 0 | 0 | 27 |
| 09/21/2022 | Chicago St. | 4-0 | * | | 0 | 1 | 1 | 1 | .000 | 0 | .000 | 0 | 0-0 | 0 | 0 | 29 |
| 09/24/2022 | North Carolina | 0-1 | * | | 0 | 0 | 0 | 1 | .000 | 0 | .000 | 0 | 0-0 | 0 | 0 | 29 |
| 09/27/2022 | Kalamazoo | 8-0 | * | | 0 | 1 | 1 | 0 | .000 | 0 | .000 | 0 | 0-0 | 0 | 0 | 43 |
| 09/30/2022 | Boston College | 2-1 | * | | 0 | 0 | 0 | 0 | .000 | 0 | .000 | 0 | 0-0 | 0 | 0 | 18 |
| 10/05/2022 | at Indiana | 0-1 | * | | 0 | 0 | 0 | 0 | .000 | 0 | .000 | 0 | 0-0 | 0 | 0 | 8 |
| 10/08/2022 | Louisville | 0-2 | * | | 0 | 0 | 0 | 0 | .000 | 0 | .000 | 0 | 0-0 | 0 | 0 | 2 |
| 10/14/2022 | at Duke | 0-2 | * | | 0 | 0 | 0 | 0 | .000 | 0 | .000 | 0 | 0-0 | 0 | 0 | 17 |
| 10/21/2022 | Virginia Tech | 1-0 | * | | 0 | 0 | 0 | 0 | .000 | 0 | .000 | 0 | 0-0 | 0 | 0 | 10 |
| 10/25/2022 | Michigan | 3-2 | * | | 0 | 0 | 0 | 0 | .000 | 0 | .000 | 0 | 0-0 | 0 | 0 | 6 |
| 10/28/2022 | at Pittsburgh | 1-1 | * | | 0 | 0 | 0 | 1 | .000 | 1 | .200 | 0 | 0-0 | 1 | 0 | 26 |
| Totals | | 26-18 | 15 | 1 | 0 | 2 | 2 | 5 | .000 | 1 | .200 | 0 | 0-0 | 1 | 0 | 339 |

Player Averages

| Games Played | Shots per game | Assists per game | Goals per game | Points per game |
|--------------|----------------|------------------|----------------|-----------------|
| 15 | 0.33 | 0.13 | 0.00 | 0.13 |

2022 INDIVIDUAL GAME-BY-GAME

#9 NTO, Eno

| Date | Opponent | SCORE | GP | GS | G | A | PTS | SH | SH% | SOG | SOG% | GW | PK-ATT | YC | RC | MIN |
|---------------|-----------------|--------------|-----------|----------|----------|----------|----------|-----------|-------------|----------|-------------|----------|------------|----------|----------|------------|
| 08/25/2022 | Seattle U | 1-3 | * | * | 0 | 1 | 1 | 0 | .000 | 0 | .000 | 0 | 0-0 | 0 | 0 | 64 |
| 08/29/2022 | at Michigan St. | 3-2 | * | * | 0 | 0 | 0 | 0 | .000 | 0 | .000 | 0 | 0-0 | 0 | 0 | 64 |
| 09/06/2022 | DePaul | 1-1 | * | * | 0 | 0 | 0 | 1 | .000 | 1 | 1.000 | 0 | 0-0 | 0 | 0 | 48 |
| 09/10/2022 | at Syracuse | 0-1 | * | * | 0 | 0 | 0 | 1 | .000 | 0 | .500 | 0 | 0-0 | 0 | 0 | 67 |
| 09/16/2022 | at Virginia | 2-1 | * | | 0 | 0 | 0 | 0 | .000 | 0 | .500 | 0 | 0-0 | 0 | 0 | 22 |
| 09/21/2022 | Chicago St. | 4-0 | * | | 0 | 1 | 1 | 0 | .000 | 0 | .500 | 0 | 0-0 | 0 | 0 | 28 |
| 09/24/2022 | North Carolina | 0-1 | * | | 0 | 0 | 0 | 1 | .000 | 0 | .333 | 0 | 0-0 | 0 | 0 | 26 |
| 09/27/2022 | Kalamazoo | 8-0 | * | | 1 | 0 | 2 | 2 | .200 | 2 | .600 | 0 | 0-0 | 0 | 0 | 40 |
| 09/30/2022 | Boston College | 2-1 | * | | 1 | 0 | 2 | 1 | .333 | 1 | .667 | 1 | 0-0 | 0 | 0 | 28 |
| 10/05/2022 | at Indiana | 0-1 | * | | 0 | 0 | 0 | 1 | .286 | 0 | .571 | 0 | 0-0 | 0 | 0 | 40 |
| 10/08/2022 | Louisville | 0-2 | * | * | 0 | 0 | 0 | 0 | .286 | 0 | .571 | 0 | 0-0 | 0 | 0 | 29 |
| 10/14/2022 | at Duke | 0-2 | * | | 0 | 0 | 0 | 1 | .250 | 0 | .500 | 0 | 0-0 | 0 | 0 | 25 |
| 10/18/2022 | at UIC | 4-2 | * | | 0 | 0 | 0 | 1 | .222 | 1 | .556 | 0 | 0-0 | 0 | 0 | 29 |
| 10/21/2022 | Virginia Tech | 1-0 | * | | 0 | 0 | 0 | 1 | .200 | 1 | .600 | 0 | 0-0 | 0 | 0 | 33 |
| 10/25/2022 | Michigan | 3-2 | * | | 0 | 0 | 0 | 0 | .200 | 0 | .600 | 0 | 0-0 | 0 | 0 | 23 |
| 10/28/2022 | at Pittsburgh | 1-1 | * | | 0 | 1 | 1 | 2 | .167 | 2 | .667 | 0 | 0-0 | 0 | 0 | 38 |
| Totals | | 30-20 | 16 | 5 | 2 | 3 | 7 | 12 | .167 | 8 | .667 | 1 | 0-0 | 0 | 0 | 598 |

Player Averages

| Games Played | Shots per game | Assists per game | Goals per game | Points per game |
|--------------|----------------|------------------|----------------|-----------------|
| 16 | 0.75 | 0.19 | 0.13 | 0.44 |

2022 INDIVIDUAL GAME-BY-GAME

#11 RUSSO, Daniel

| Date | Opponent | SCORE | GP | GS | G | A | PTS | SH | SH% | SOG | SOG% | GW | PK-ATT | YC | RC | MIN |
|---------------|-----------------|--------------|-----------|-----------|----------|----------|-----------|-----------|-------------|-----------|-------------|----------|------------|----------|----------|------------|
| 08/25/2022 | Seattle U | 1-3 | * | * | 0 | 1 | 1 | 2 | .000 | 0 | .000 | 0 | 0-0 | 0 | 0 | 82 |
| 08/29/2022 | at Michigan St. | 3-2 | * | * | 0 | 0 | 0 | 6 | .000 | 1 | .125 | 0 | 0-0 | 0 | 0 | 71 |
| 09/06/2022 | DePaul | 1-1 | * | * | 0 | 0 | 0 | 1 | .000 | 0 | .111 | 0 | 0-0 | 0 | 0 | 43 |
| 09/10/2022 | at Syracuse | 0-1 | * | * | 0 | 0 | 0 | 0 | .000 | 0 | .111 | 0 | 0-0 | 0 | 0 | 44 |
| 09/16/2022 | at Virginia | 2-1 | * | * | 0 | 0 | 0 | 2 | .000 | 0 | .091 | 0 | 0-0 | 0 | 0 | 50 |
| 09/21/2022 | Chicago St. | 4-0 | * | | 1 | 1 | 3 | 3 | .071 | 1 | .143 | 0 | 0-0 | 0 | 0 | 46 |
| 09/24/2022 | North Carolina | 0-1 | * | | 0 | 0 | 0 | 2 | .063 | 0 | .125 | 0 | 0-0 | 0 | 0 | 47 |
| 09/27/2022 | Kalamazoo | 8-0 | * | | 1 | 0 | 2 | 1 | .118 | 1 | .176 | 0 | 1-1 | 0 | 0 | 21 |
| 09/30/2022 | Boston College | 2-1 | * | | 0 | 1 | 1 | 1 | .111 | 0 | .167 | 0 | 0-0 | 0 | 0 | 33 |
| 10/05/2022 | at Indiana | 0-1 | * | | 0 | 0 | 0 | 0 | .111 | 0 | .167 | 0 | 0-0 | 0 | 0 | 18 |
| 10/08/2022 | Louisville | 0-2 | * | | 0 | 0 | 0 | 2 | .100 | 2 | .250 | 0 | 0-0 | 0 | 0 | 45 |
| 10/14/2022 | at Duke | 0-2 | * | * | 0 | 0 | 0 | 1 | .095 | 1 | .286 | 0 | 0-0 | 0 | 0 | 64 |
| 10/18/2022 | at UIC | 4-2 | * | * | 0 | 1 | 1 | 1 | .091 | 1 | .318 | 0 | 0-0 | 0 | 0 | 78 |
| 10/21/2022 | Virginia Tech | 1-0 | * | * | 0 | 0 | 0 | 2 | .083 | 1 | .333 | 0 | 0-0 | 0 | 0 | 62 |
| 10/25/2022 | Michigan | 3-2 | * | * | 3 | 0 | 6 | 6 | .167 | 4 | .400 | 1 | 0-0 | 0 | 0 | 72 |
| 10/28/2022 | at Pittsburgh | 1-1 | * | * | 1 | 0 | 2 | 4 | .176 | 3 | .441 | 0 | 0-0 | 0 | 0 | 66 |
| Totals | | 30-20 | 16 | 10 | 6 | 4 | 16 | 34 | .176 | 15 | .441 | 1 | 1-1 | 0 | 0 | 836 |

Player Averages

| Games Played | Shots per game | Assists per game | Goals per game | Points per game |
|--------------|----------------|------------------|----------------|-----------------|
| 16 | 2.13 | 0.25 | 0.38 | 1.00 |

2022 INDIVIDUAL GAME-BY-GAME

#13 BONEAU, Bryce

| Date | Opponent | SCORE | GP | GS | G | A | PTS | SH | SH% | SOG | SOG% | GW | PK-ATT | YC | RC | MIN |
|---------------|-----------------|--------------|-----------|-----------|----------|----------|----------|-----------|-------------|----------|-------------|----------|------------|----------|----------|-------------|
| 08/25/2022 | Seattle U | 1-3 | * | * | 0 | 0 | 0 | 0 | .000 | 0 | .000 | 0 | 0-0 | 0 | 0 | 79 |
| 08/29/2022 | at Michigan St. | 3-2 | * | * | 0 | 2 | 2 | 3 | .000 | 0 | .000 | 0 | 0-0 | 0 | 0 | 63 |
| 09/06/2022 | DePaul | 1-1 | * | * | 0 | 0 | 0 | 1 | .000 | 0 | .000 | 0 | 0-0 | 0 | 0 | 71 |
| 09/10/2022 | at Syracuse | 0-1 | * | * | 0 | 0 | 0 | 0 | .000 | 0 | .000 | 0 | 0-0 | 0 | 0 | 67 |
| 09/16/2022 | at Virginia | 2-1 | * | * | 0 | 0 | 0 | 1 | .000 | 1 | .200 | 0 | 0-0 | 0 | 0 | 65 |
| 09/21/2022 | Chicago St. | 4-0 | * | * | 0 | 0 | 0 | 1 | .000 | 0 | .167 | 0 | 0-0 | 0 | 0 | 63 |
| 09/24/2022 | North Carolina | 0-1 | * | * | 0 | 0 | 0 | 0 | .000 | 0 | .167 | 0 | 0-0 | 0 | 0 | 78 |
| 09/27/2022 | Kalamazoo | 8-0 | * | * | 0 | 0 | 0 | 0 | .000 | 0 | .167 | 0 | 0-0 | 0 | 0 | 32 |
| 09/30/2022 | Boston College | 2-1 | * | * | 0 | 0 | 0 | 0 | .000 | 0 | .167 | 0 | 0-0 | 0 | 0 | 75 |
| 10/05/2022 | at Indiana | 0-1 | * | * | 0 | 0 | 0 | 2 | .000 | 0 | .125 | 0 | 0-0 | 0 | 0 | 85 |
| 10/08/2022 | Louisville | 0-2 | * | * | 0 | 0 | 0 | 2 | .000 | 0 | .100 | 0 | 0-0 | 0 | 0 | 74 |
| 10/14/2022 | at Duke | 0-2 | * | * | 0 | 0 | 0 | 0 | .000 | 0 | .100 | 0 | 0-0 | 0 | 0 | 82 |
| 10/18/2022 | at UIC | 4-2 | * | * | 0 | 1 | 1 | 0 | .000 | 0 | .100 | 0 | 0-0 | 0 | 0 | 86 |
| 10/21/2022 | Virginia Tech | 1-0 | * | * | 0 | 0 | 0 | 2 | .000 | 0 | .083 | 0 | 0-0 | 0 | 0 | 90 |
| 10/25/2022 | Michigan | 3-2 | * | * | 0 | 0 | 0 | 2 | .000 | 1 | .143 | 0 | 0-0 | 0 | 0 | 90 |
| 10/28/2022 | at Pittsburgh | 1-1 | * | * | 0 | 0 | 0 | 1 | .000 | 1 | .200 | 0 | 0-0 | 0 | 0 | 69 |
| Totals | | 30-20 | 16 | 16 | 0 | 3 | 3 | 15 | .000 | 3 | .200 | 0 | 0-0 | 0 | 0 | 1164 |

Player Averages

| Games Played | Shots per game | Assists per game | Goals per game | Points per game |
|--------------|----------------|------------------|----------------|-----------------|
| 16 | 0.94 | 0.19 | 0.00 | 0.19 |

2022 INDIVIDUAL GAME-BY-GAME

#14 WILLIAMS, Maurice

| Date | Opponent | SCORE | GP | GS | G | A | PTS | SH | SH% | SOG | SOG% | GW | PK-ATT | YC | RC | MIN |
|---------------|-----------------|--------------|-----------|-----------|----------|----------|----------|----------|-------------|----------|-------------|----------|------------|----------|----------|-------------|
| 08/25/2022 | Seattle U | 1-3 | * | * | 0 | 0 | 0 | 1 | .000 | 0 | .000 | 0 | 0-0 | 0 | 0 | 90 |
| 08/29/2022 | at Michigan St. | 3-2 | * | * | 0 | 0 | 0 | 0 | .000 | 0 | .000 | 0 | 0-0 | 0 | 0 | 90 |
| 09/06/2022 | DePaul | 1-1 | * | * | 0 | 0 | 0 | 1 | .000 | 0 | .000 | 0 | 0-0 | 0 | 0 | 83 |
| 09/10/2022 | at Syracuse | 0-1 | * | * | 0 | 0 | 0 | 0 | .000 | 0 | .000 | 0 | 0-0 | 0 | 0 | 90 |
| 09/16/2022 | at Virginia | 2-1 | * | * | 0 | 0 | 0 | 0 | .000 | 0 | .000 | 0 | 0-0 | 0 | 0 | 90 |
| 09/21/2022 | Chicago St. | 4-0 | * | * | 0 | 0 | 0 | 0 | .000 | 0 | .000 | 0 | 0-0 | 0 | 0 | 90 |
| 09/24/2022 | North Carolina | 0-1 | * | * | 0 | 0 | 0 | 0 | .000 | 0 | .000 | 0 | 0-0 | 0 | 0 | 90 |
| 09/27/2022 | Kalamazoo | 8-0 | * | * | 0 | 0 | 0 | 1 | .000 | 0 | .000 | 0 | 0-0 | 0 | 0 | 45 |
| 09/30/2022 | Boston College | 2-1 | * | * | 0 | 0 | 0 | 0 | .000 | 0 | .000 | 0 | 0-0 | 0 | 0 | 90 |
| 10/05/2022 | at Indiana | 0-1 | * | * | 0 | 0 | 0 | 1 | .000 | 0 | .000 | 0 | 0-0 | 0 | 0 | 90 |
| 10/08/2022 | Louisville | 0-2 | * | * | 0 | 0 | 0 | 0 | .000 | 0 | .000 | 0 | 0-0 | 0 | 0 | 90 |
| 10/14/2022 | at Duke | 0-2 | * | * | 0 | 0 | 0 | 1 | .000 | 1 | .200 | 0 | 0-0 | 0 | 0 | 90 |
| 10/18/2022 | at UIC | 4-2 | * | * | 0 | 0 | 0 | 1 | .000 | 1 | .333 | 0 | 0-0 | 0 | 0 | 90 |
| 10/21/2022 | Virginia Tech | 1-0 | * | * | 0 | 0 | 0 | 0 | .000 | 0 | .333 | 0 | 0-0 | 0 | 0 | 23 |
| Totals | | 26-17 | 14 | 14 | 0 | 0 | 0 | 6 | .000 | 2 | .333 | 0 | 0-0 | 0 | 0 | 1140 |

Player Averages

| Games Played | Shots per game | Assists per game | Goals per game | Points per game |
|--------------|----------------|------------------|----------------|-----------------|
| 14 | 0.43 | 0.00 | 0.00 | 0.00 |

2022 INDIVIDUAL GAME-BY-GAME

#15 BURNS, Paddy

| Date | Opponent | SCORE | GP | GS | G | A | PTS | SH | SH% | SOG | SOG% | GW | PK-ATT | YC | RC | MIN |
|---------------|-----------------|--------------|-----------|-----------|----------|----------|-----------|-----------|-------------|----------|-------------|----------|------------|----------|----------|-------------|
| 08/25/2022 | Seattle U | 1-3 | * | * | 0 | 0 | 0 | 4 | .000 | 0 | .000 | 0 | 0-0 | 0 | 0 | 90 |
| 08/29/2022 | at Michigan St. | 3-2 | * | * | 1 | 0 | 2 | 1 | .200 | 1 | .200 | 0 | 0-0 | 0 | 0 | 59 |
| 09/06/2022 | DePaul | 1-1 | * | * | 0 | 0 | 0 | 3 | .125 | 1 | .250 | 0 | 0-1 | 0 | 0 | 90 |
| 09/10/2022 | at Syracuse | 0-1 | * | * | 0 | 0 | 0 | 0 | .125 | 0 | .250 | 0 | 0-0 | 0 | 0 | 90 |
| 09/16/2022 | at Virginia | 2-1 | * | * | 0 | 0 | 0 | 1 | .111 | 0 | .222 | 0 | 0-0 | 0 | 0 | 90 |
| 09/21/2022 | Chicago St. | 4-0 | * | * | 2 | 0 | 4 | 5 | .214 | 2 | .286 | 1 | 0-0 | 0 | 0 | 84 |
| 09/24/2022 | North Carolina | 0-1 | * | * | 0 | 0 | 0 | 2 | .188 | 2 | .375 | 0 | 0-0 | 0 | 0 | 90 |
| 09/27/2022 | Kalamazoo | 8-0 | * | * | 1 | 0 | 2 | 2 | .222 | 1 | .389 | 0 | 0-0 | 0 | 0 | 29 |
| 09/30/2022 | Boston College | 2-1 | * | * | 0 | 0 | 0 | 1 | .211 | 0 | .368 | 0 | 0-0 | 0 | 0 | 90 |
| 10/05/2022 | at Indiana | 0-1 | * | * | 0 | 0 | 0 | 3 | .182 | 1 | .364 | 0 | 0-0 | 1 | 0 | 90 |
| 10/08/2022 | Louisville | 0-2 | * | * | 0 | 0 | 0 | 0 | .182 | 0 | .364 | 0 | 0-0 | 0 | 0 | 90 |
| 10/14/2022 | at Duke | 0-2 | * | * | 0 | 0 | 0 | 1 | .174 | 0 | .348 | 0 | 0-0 | 0 | 0 | 90 |
| 10/18/2022 | at UIC | 4-2 | * | * | 0 | 0 | 0 | 1 | .167 | 0 | .333 | 0 | 0-0 | 1 | 0 | 76 |
| 10/21/2022 | Virginia Tech | 1-0 | * | * | 1 | 0 | 2 | 1 | .200 | 1 | .360 | 1 | 1-1 | 0 | 0 | 90 |
| 10/25/2022 | Michigan | 3-2 | * | * | 0 | 0 | 0 | 1 | .192 | 0 | .346 | 0 | 0-0 | 0 | 0 | 90 |
| 10/28/2022 | at Pittsburgh | 1-1 | * | * | 0 | 0 | 0 | 1 | .185 | 0 | .333 | 0 | 0-0 | 0 | 0 | 90 |
| Totals | | 30-20 | 16 | 16 | 5 | 0 | 10 | 27 | .185 | 9 | .333 | 2 | 1-2 | 2 | 0 | 1327 |

Player Averages

| Games Played | Shots per game | Assists per game | Goals per game | Points per game |
|--------------|----------------|------------------|----------------|-----------------|
| 16 | 1.69 | 0.00 | 0.31 | 0.63 |

2022 INDIVIDUAL GAME-BY-GAME

#16 BAFFOUR, Kk

| Date | Opponent | SCORE | GP | GS | G | A | PTS | SH | SH% | SOG | SOG% | GW | PK-ATT | YC | RC | MIN |
|---------------|-----------------|--------------|-----------|----------|----------|----------|----------|-----------|-------------|----------|-------------|----------|------------|----------|----------|------------|
| 08/25/2022 | Seattle U | 1-3 | * | | 0 | 0 | 0 | 0 | .000 | 0 | .000 | 0 | 0-0 | 0 | 0 | 11 |
| 08/29/2022 | at Michigan St. | 3-2 | * | | 0 | 0 | 0 | 1 | .000 | 0 | .000 | 0 | 0-0 | 0 | 0 | 24 |
| 09/06/2022 | DePaul | 1-1 | * | | 0 | 1 | 1 | 1 | .000 | 1 | .500 | 0 | 0-0 | 1 | 0 | 48 |
| 09/10/2022 | at Syracuse | 0-1 | * | | 0 | 0 | 0 | 1 | .000 | 0 | .333 | 0 | 0-0 | 0 | 0 | 52 |
| 09/16/2022 | at Virginia | 2-1 | * | | 1 | 0 | 2 | 2 | .200 | 1 | .400 | 1 | 0-0 | 1 | 0 | 40 |
| 09/21/2022 | Chicago St. | 4-0 | * | * | 0 | 0 | 0 | 1 | .167 | 0 | .333 | 0 | 0-0 | 0 | 0 | 52 |
| 09/24/2022 | North Carolina | 0-1 | * | * | 0 | 0 | 0 | 1 | .143 | 0 | .286 | 0 | 0-0 | 1 | 0 | 48 |
| 09/27/2022 | Kalamazoo | 8-0 | * | * | 1 | 2 | 4 | 1 | .250 | 1 | .375 | 0 | 0-0 | 0 | 0 | 25 |
| 09/30/2022 | Boston College | 2-1 | * | * | 0 | 0 | 0 | 4 | .167 | 1 | .333 | 0 | 0-0 | 1 | 0 | 56 |
| 10/05/2022 | at Indiana | 0-1 | * | * | 0 | 0 | 0 | 0 | .167 | 0 | .333 | 0 | 0-0 | 0 | 0 | 66 |
| 10/08/2022 | Louisville | 0-2 | * | | 0 | 0 | 0 | 0 | .167 | 0 | .333 | 0 | 0-0 | 0 | 0 | 36 |
| 10/14/2022 | at Duke | 0-2 | * | | 0 | 0 | 0 | 1 | .154 | 0 | .308 | 0 | 0-0 | 1 | 0 | 38 |
| 10/21/2022 | Virginia Tech | 1-0 | * | * | 0 | 0 | 0 | 2 | .133 | 1 | .333 | 0 | 0-0 | 0 | 0 | 70 |
| 10/25/2022 | Michigan | 3-2 | * | * | 0 | 0 | 0 | 2 | .118 | 1 | .353 | 0 | 0-0 | 0 | 0 | 75 |
| 10/28/2022 | at Pittsburgh | 1-1 | * | * | 0 | 0 | 0 | 1 | .111 | 0 | .333 | 0 | 0-0 | 1 | 0 | 46 |
| Totals | | 26-18 | 15 | 8 | 2 | 3 | 7 | 18 | .111 | 6 | .333 | 1 | 0-0 | 6 | 0 | 680 |

Player Averages

| Games Played | Shots per game | Assists per game | Goals per game | Points per game |
|--------------|----------------|------------------|----------------|-----------------|
| 15 | 1.20 | 0.20 | 0.13 | 0.47 |

2022 INDIVIDUAL GAME-BY-GAME

#18 RAMSEY, Josh

| Date | Opponent | SCORE | GP | GS | G | A | PTS | SH | SH% | SOG | SOG% | GW | PK-ATT | YC | RC | MIN |
|---------------|-----------------|--------------|-----------|-----------|----------|----------|----------|----------|-------------|----------|-------------|----------|------------|----------|----------|-------------|
| 08/25/2022 | Seattle U | 1-3 | * | * | 0 | 0 | 0 | 0 | .000 | 0 | .000 | 0 | 0-0 | 0 | 0 | 90 |
| 08/29/2022 | at Michigan St. | 3-2 | * | * | 0 | 0 | 0 | 0 | .000 | 0 | .000 | 0 | 0-0 | 0 | 0 | 90 |
| 09/06/2022 | DePaul | 1-1 | * | * | 0 | 0 | 0 | 0 | .000 | 0 | .000 | 0 | 0-0 | 0 | 0 | 90 |
| 09/10/2022 | at Syracuse | 0-1 | * | * | 0 | 0 | 0 | 0 | .000 | 0 | .000 | 0 | 0-0 | 0 | 0 | 90 |
| 09/16/2022 | at Virginia | 2-1 | * | * | 0 | 0 | 0 | 0 | .000 | 0 | .000 | 0 | 0-0 | 1 | 0 | 90 |
| 09/21/2022 | Chicago St. | 4-0 | * | * | 0 | 0 | 0 | 0 | .000 | 0 | .000 | 0 | 0-0 | 0 | 0 | 90 |
| 09/24/2022 | North Carolina | 0-1 | * | * | 0 | 0 | 0 | 0 | .000 | 0 | .000 | 0 | 0-0 | 0 | 0 | 90 |
| 09/27/2022 | Kalamazoo | 8-0 | * | * | 0 | 0 | 0 | 0 | .000 | 0 | .000 | 0 | 0-0 | 0 | 0 | 45 |
| 09/30/2022 | Boston College | 2-1 | * | * | 0 | 0 | 0 | 0 | .000 | 0 | .000 | 0 | 0-0 | 0 | 0 | 90 |
| 10/05/2022 | at Indiana | 0-1 | * | * | 0 | 0 | 0 | 0 | .000 | 0 | .000 | 0 | 0-0 | 1 | 0 | 80 |
| 10/08/2022 | Louisville | 0-2 | * | * | 0 | 0 | 0 | 1 | .000 | 0 | .000 | 0 | 0-0 | 0 | 0 | 90 |
| 10/14/2022 | at Duke | 0-2 | * | * | 0 | 0 | 0 | 0 | .000 | 0 | .000 | 0 | 0-0 | 1 | 0 | 76 |
| 10/18/2022 | at UIC | 4-2 | * | * | 0 | 0 | 0 | 0 | .000 | 0 | .000 | 0 | 0-0 | 1 | 0 | 90 |
| 10/21/2022 | Virginia Tech | 1-0 | * | * | 0 | 0 | 0 | 0 | .000 | 0 | .000 | 0 | 0-0 | 0 | 0 | 90 |
| 10/25/2022 | Michigan | 3-2 | * | * | 0 | 0 | 0 | 0 | .000 | 0 | .000 | 0 | 0-0 | 0 | 0 | 90 |
| 10/28/2022 | at Pittsburgh | 1-1 | * | * | 0 | 0 | 0 | 0 | .000 | 0 | .000 | 0 | 0-0 | 0 | 0 | 90 |
| Totals | | 30-20 | 16 | 16 | 0 | 0 | 0 | 1 | .000 | 0 | .000 | 0 | 0-0 | 4 | 0 | 1371 |

Player Averages

| Games Played | Shots per game | Assists per game | Goals per game | Points per game |
|--------------|----------------|------------------|----------------|-----------------|
| 16 | 0.06 | 0.00 | 0.00 | 0.00 |

2022 INDIVIDUAL GAME-BY-GAME

#21 ROOU, Matthew

| Date | Opponent | SCORE | GP | GS | G | A | PTS | SH | SH% | SOG | SOG% | GW | PK-ATT | YC | RC | MIN |
|---------------|-----------------|--------------|-----------|-----------|----------|----------|-----------|-----------|-------------|-----------|-------------|----------|------------|----------|----------|-------------|
| 08/25/2022 | Seattle U | 1-3 | * | * | 0 | 0 | 0 | 5 | .000 | 1 | .200 | 0 | 0-0 | 0 | 0 | 80 |
| 08/29/2022 | at Michigan St. | 3-2 | * | * | 0 | 0 | 0 | 2 | .000 | 1 | .286 | 0 | 0-0 | 0 | 0 | 70 |
| 09/06/2022 | DePaul | 1-1 | * | * | 1 | 0 | 2 | 3 | .100 | 1 | .300 | 0 | 0-0 | 0 | 0 | 79 |
| 09/10/2022 | at Syracuse | 0-1 | * | | 0 | 0 | 0 | 1 | .091 | 1 | .364 | 0 | 0-0 | 0 | 0 | 71 |
| 09/16/2022 | at Virginia | 2-1 | * | * | 0 | 1 | 1 | 0 | .091 | 0 | .364 | 0 | 0-0 | 0 | 0 | 60 |
| 09/21/2022 | Chicago St. | 4-0 | * | * | 0 | 1 | 1 | 1 | .083 | 0 | .333 | 0 | 0-0 | 0 | 0 | 55 |
| 09/24/2022 | North Carolina | 0-1 | * | * | 0 | 0 | 0 | 0 | .083 | 0 | .333 | 0 | 0-0 | 0 | 0 | 70 |
| 09/27/2022 | Kalamazoo | 8-0 | * | * | 1 | 0 | 2 | 1 | .154 | 1 | .385 | 0 | 0-0 | 0 | 0 | 25 |
| 09/30/2022 | Boston College | 2-1 | * | * | 0 | 0 | 0 | 1 | .143 | 0 | .357 | 0 | 0-0 | 0 | 0 | 65 |
| 10/05/2022 | at Indiana | 0-1 | * | * | 0 | 0 | 0 | 0 | .143 | 0 | .357 | 0 | 0-0 | 0 | 0 | 73 |
| 10/08/2022 | Louisville | 0-2 | * | * | 0 | 0 | 0 | 4 | .111 | 1 | .333 | 0 | 0-0 | 0 | 0 | 72 |
| 10/14/2022 | at Duke | 0-2 | * | * | 0 | 0 | 0 | 1 | .105 | 1 | .368 | 0 | 0-0 | 0 | 0 | 76 |
| 10/18/2022 | at UIC | 4-2 | * | * | 2 | 0 | 4 | 4 | .174 | 4 | .478 | 1 | 0-0 | 0 | 0 | 78 |
| 10/21/2022 | Virginia Tech | 1-0 | * | * | 0 | 0 | 0 | 4 | .148 | 0 | .407 | 0 | 0-0 | 0 | 0 | 69 |
| 10/25/2022 | Michigan | 3-2 | * | * | 0 | 2 | 2 | 6 | .121 | 3 | .424 | 0 | 0-0 | 0 | 0 | 76 |
| 10/28/2022 | at Pittsburgh | 1-1 | * | * | 0 | 0 | 0 | 2 | .114 | 1 | .429 | 0 | 0-0 | 0 | 0 | 87 |
| Totals | | 30-20 | 16 | 15 | 4 | 4 | 12 | 35 | .114 | 15 | .429 | 1 | 0-0 | 0 | 0 | 1098 |

Player Averages

| Games Played | Shots per game | Assists per game | Goals per game | Points per game |
|--------------|----------------|------------------|----------------|-----------------|
| 16 | 2.19 | 0.25 | 0.25 | 0.75 |

2022 INDIVIDUAL GAME-BY-GAME

#24 GREEN, Sebastian

| Date | Opponent | SCORE | GP | GS | G | A | PTS | SH | SH% | SOG | SOG% | GW | PK-ATT | YC | RC | MIN |
|---------------|-----------------|--------------|-----------|----------|----------|----------|----------|----------|-------------|----------|-------------|----------|------------|----------|----------|------------|
| 08/25/2022 | Seattle U | 1-3 | * | | 0 | 0 | 0 | 1 | .000 | 1 | 1.000 | 0 | 0-0 | 0 | 0 | 38 |
| 08/29/2022 | at Michigan St. | 3-2 | * | * | 1 | 0 | 2 | 1 | .500 | 1 | 1.000 | 0 | 0-0 | 0 | 0 | 76 |
| 09/06/2022 | DePaul | 1-1 | * | | 0 | 0 | 0 | 0 | .500 | 0 | 1.000 | 0 | 0-0 | 0 | 0 | 48 |
| 09/10/2022 | at Syracuse | 0-1 | * | | 0 | 0 | 0 | 0 | .500 | 0 | 1.000 | 0 | 0-0 | 0 | 0 | 54 |
| 09/16/2022 | at Virginia | 2-1 | * | * | 0 | 0 | 0 | 0 | .500 | 0 | 1.000 | 0 | 0-0 | 0 | 0 | 64 |
| 09/21/2022 | Chicago St. | 4-0 | * | * | 0 | 0 | 0 | 0 | .500 | 0 | 1.000 | 0 | 0-0 | 0 | 0 | 62 |
| 09/24/2022 | North Carolina | 0-1 | * | * | 0 | 0 | 0 | 0 | .500 | 0 | 1.000 | 0 | 0-0 | 0 | 0 | 39 |
| 09/27/2022 | Kalamazoo | 8-0 | * | | 0 | 0 | 0 | 1 | .333 | 0 | .667 | 0 | 0-0 | 0 | 0 | 49 |
| 09/30/2022 | Boston College | 2-1 | * | | 0 | 0 | 0 | 0 | .333 | 0 | .667 | 0 | 0-0 | 0 | 0 | 53 |
| 10/05/2022 | at Indiana | 0-1 | * | | 0 | 0 | 0 | 0 | .333 | 0 | .667 | 0 | 0-0 | 0 | 0 | 31 |
| 10/08/2022 | Louisville | 0-2 | * | | 0 | 0 | 0 | 1 | .250 | 0 | .500 | 0 | 0-0 | 0 | 0 | 46 |
| 10/14/2022 | at Duke | 0-2 | * | | 0 | 0 | 0 | 0 | .250 | 0 | .500 | 0 | 0-0 | 1 | 0 | 32 |
| 10/18/2022 | at UIC | 4-2 | * | * | 0 | 0 | 0 | 0 | .250 | 0 | .500 | 0 | 0-0 | 0 | 0 | 34 |
| 10/21/2022 | Virginia Tech | 1-0 | * | | 0 | 0 | 0 | 0 | .250 | 0 | .500 | 0 | 0-0 | 0 | 0 | 6 |
| 10/25/2022 | Michigan | 3-2 | * | | 0 | 0 | 0 | 0 | .250 | 0 | .500 | 0 | 0-0 | 0 | 0 | 8 |
| 10/28/2022 | at Pittsburgh | 1-1 | * | | 0 | 0 | 0 | 0 | .250 | 0 | .500 | 0 | 0-0 | 0 | 0 | 31 |
| Totals | | 30-20 | 16 | 5 | 1 | 0 | 2 | 4 | .250 | 2 | .500 | 0 | 0-0 | 1 | 0 | 662 |

Player Averages

| Games Played | Shots per game | Assists per game | Goals per game | Points per game |
|--------------|----------------|------------------|----------------|-----------------|
| 16 | 0.25 | 0.00 | 0.06 | 0.13 |

2022 INDIVIDUAL GAME-BY-GAME

#26 GIACOBELLO, Ben

| Date | Opponent | SCORE | GP | GS | G | A | PTS | SH | SH% | SOG | SOG% | GW | PK-ATT | YC | RC | MIN |
|---------------|----------------|--------------|-----------|-----------|----------|----------|----------|-----------|-------------|----------|-------------|----------|------------|----------|----------|------------|
| 09/10/2022 | at Syracuse | 0-1 | * | * | 0 | 0 | 0 | 0 | .000 | 0 | .000 | 0 | 0-0 | 0 | 0 | 15 |
| 09/16/2022 | at Virginia | 2-1 | * | * | 0 | 0 | 0 | 0 | .000 | 0 | .000 | 0 | 0-0 | 0 | 0 | 61 |
| 09/21/2022 | Chicago St. | 4-0 | * | * | 1 | 0 | 2 | 2 | .500 | 1 | .500 | 0 | 0-0 | 0 | 0 | 79 |
| 09/24/2022 | North Carolina | 0-1 | * | * | 0 | 0 | 0 | 1 | .333 | 0 | .333 | 0 | 0-0 | 0 | 0 | 90 |
| 09/27/2022 | Kalamazoo | 8-0 | * | * | 0 | 0 | 0 | 0 | .333 | 0 | .333 | 0 | 0-0 | 0 | 0 | 29 |
| 09/30/2022 | Boston College | 2-1 | * | * | 0 | 0 | 0 | 1 | .250 | 0 | .250 | 0 | 0-0 | 0 | 0 | 90 |
| 10/05/2022 | at Indiana | 0-1 | * | * | 0 | 0 | 0 | 1 | .200 | 0 | .200 | 0 | 0-0 | 0 | 0 | 86 |
| 10/08/2022 | Louisville | 0-2 | * | * | 0 | 0 | 0 | 0 | .200 | 0 | .200 | 0 | 0-0 | 0 | 0 | 90 |
| 10/14/2022 | at Duke | 0-2 | * | * | 0 | 0 | 0 | 1 | .167 | 1 | .333 | 0 | 0-0 | 0 | 0 | 90 |
| 10/18/2022 | at UIC | 4-2 | * | * | 0 | 0 | 0 | 0 | .167 | 0 | .333 | 0 | 0-0 | 0 | 0 | 90 |
| 10/21/2022 | Virginia Tech | 1-0 | * | * | 0 | 0 | 0 | 1 | .143 | 1 | .429 | 0 | 0-0 | 0 | 0 | 90 |
| 10/25/2022 | Michigan | 3-2 | * | * | 0 | 0 | 0 | 0 | .143 | 0 | .429 | 0 | 0-0 | 0 | 0 | 90 |
| 10/28/2022 | at Pittsburgh | 1-1 | * | * | 0 | 0 | 0 | 3 | .100 | 1 | .400 | 0 | 0-0 | 0 | 0 | 90 |
| Totals | | 25-14 | 13 | 13 | 1 | 0 | 2 | 10 | .100 | 4 | .400 | 0 | 0-0 | 0 | 0 | 988 |

Player Averages

| Games Played | Shots per game | Assists per game | Goals per game | Points per game |
|--------------|----------------|------------------|----------------|-----------------|
| 13 | 0.77 | 0.00 | 0.08 | 0.15 |

2022 INDIVIDUAL GAME-BY-GAME

#27 BORSO, Wyatt

| Date | Opponent | SCORE | GP | GS | G | A | PTS | SH | SH% | SOG | SOG% | GW | PK-ATT | YC | RC | MIN |
|---------------|-----------------|--------------|-----------|-----------|----------|----------|----------|-----------|-------------|----------|-------------|----------|------------|----------|----------|------------|
| 08/25/2022 | Seattle U | 1-3 | * | * | 0 | 0 | 0 | 1 | .000 | 1 | 1.000 | 0 | 0-0 | 0 | 0 | 44 |
| 08/29/2022 | at Michigan St. | 3-2 | * | | 0 | 0 | 0 | 1 | .000 | 0 | .500 | 0 | 0-0 | 0 | 0 | 46 |
| 09/06/2022 | DePaul | 1-1 | * | | 0 | 0 | 0 | 2 | .000 | 1 | .500 | 0 | 0-0 | 0 | 0 | 43 |
| 09/10/2022 | at Syracuse | 0-1 | * | * | 0 | 0 | 0 | 0 | .000 | 0 | .500 | 0 | 0-0 | 0 | 0 | 37 |
| 09/16/2022 | at Virginia | 2-1 | * | | 0 | 0 | 0 | 1 | .000 | 0 | .400 | 0 | 0-0 | 0 | 0 | 48 |
| 09/21/2022 | Chicago St. | 4-0 | * | | 0 | 0 | 0 | 0 | .000 | 0 | .400 | 0 | 0-0 | 0 | 0 | 36 |
| 09/24/2022 | North Carolina | 0-1 | * | | 0 | 0 | 0 | 1 | .000 | 0 | .333 | 0 | 0-0 | 0 | 0 | 41 |
| 09/27/2022 | Kalamazoo | 8-0 | * | * | 1 | 0 | 2 | 3 | .111 | 3 | .556 | 1 | 0-0 | 0 | 0 | 45 |
| 09/30/2022 | Boston College | 2-1 | * | * | 1 | 0 | 2 | 3 | .167 | 2 | .583 | 0 | 0-0 | 0 | 0 | 46 |
| 10/05/2022 | at Indiana | 0-1 | * | * | 0 | 0 | 0 | 1 | .154 | 0 | .538 | 0 | 0-0 | 0 | 0 | 60 |
| 10/08/2022 | Louisville | 0-2 | * | * | 0 | 0 | 0 | 3 | .125 | 0 | .438 | 0 | 0-0 | 0 | 0 | 74 |
| 10/14/2022 | at Duke | 0-2 | * | * | 0 | 0 | 0 | 0 | .125 | 0 | .438 | 0 | 0-0 | 0 | 0 | 68 |
| 10/18/2022 | at UIC | 4-2 | * | * | 0 | 0 | 0 | 1 | .118 | 0 | .412 | 0 | 0-0 | 0 | 0 | 76 |
| 10/21/2022 | Virginia Tech | 1-0 | * | * | 0 | 0 | 0 | 1 | .111 | 1 | .444 | 0 | 0-0 | 0 | 0 | 61 |
| 10/25/2022 | Michigan | 3-2 | * | * | 0 | 1 | 1 | 2 | .100 | 0 | .400 | 0 | 0-0 | 0 | 0 | 78 |
| 10/28/2022 | at Pittsburgh | 1-1 | * | * | 0 | 0 | 0 | 3 | .087 | 1 | .391 | 0 | 0-0 | 0 | 0 | 69 |
| Totals | | 30-20 | 16 | 11 | 2 | 1 | 5 | 23 | .087 | 9 | .391 | 1 | 0-0 | 0 | 0 | 861 |

Player Averages

| Games Played | Shots per game | Assists per game | Goals per game | Points per game |
|--------------|----------------|------------------|----------------|-----------------|
| 16 | 1.44 | 0.06 | 0.13 | 0.31 |

2022 INDIVIDUAL GAME-BY-GAME

#28 LEGENDRE, Nicholas

| Date | Opponent | SCORE | GP | GS | G | A | PTS | SH | SH% | SOG | SOG% | GW | PK-ATT | YC | RC | MIN |
|---------------|---------------|-------------|----------|----------|----------|----------|----------|----------|-------------|----------|--------------|----------|------------|----------|----------|------------|
| 09/06/2022 | DePaul | 1-1 | * | | 0 | 0 | 0 | 0 | .000 | 0 | .000 | 0 | 0-0 | 0 | 0 | 12 |
| 09/16/2022 | at Virginia | 2-1 | * | | 0 | 0 | 0 | 0 | .000 | 0 | .000 | 0 | 0-0 | 1 | 0 | 5 |
| 09/21/2022 | Chicago St. | 4-0 | * | | 0 | 0 | 0 | 0 | .000 | 0 | .000 | 0 | 0-0 | 0 | 0 | 12 |
| 09/27/2022 | Kalamazoo | 8-0 | * | | 1 | 1 | 3 | 2 | .500 | 2 | 1.000 | 0 | 0-0 | 0 | 0 | 46 |
| 10/21/2022 | Virginia Tech | 1-0 | * | | 0 | 0 | 0 | 0 | .500 | 0 | 1.000 | 0 | 0-0 | 0 | 0 | 10 |
| 10/25/2022 | Michigan | 3-2 | * | | 0 | 0 | 0 | 0 | .500 | 0 | 1.000 | 0 | 0-0 | 0 | 0 | 15 |
| 10/28/2022 | at Pittsburgh | 1-1 | * | | 0 | 0 | 0 | 0 | .500 | 0 | 1.000 | 0 | 0-0 | 0 | 0 | 9 |
| Totals | | 20-5 | 7 | 0 | 1 | 1 | 3 | 2 | .500 | 2 | 1.000 | 0 | 0-0 | 1 | 0 | 106 |

Player Averages

| Games Played | Shots per game | Assists per game | Goals per game | Points per game |
|--------------|----------------|------------------|----------------|-----------------|
| 7 | 0.29 | 0.14 | 0.14 | 0.43 |

2022 INDIVIDUAL GAME-BY-GAME

#31 DOWD, Bryan

| Date | Opponent | SCORE | GP | GS | G | A | PTS | SH | SH% | SOG | SOG% | GW | PK-ATT | YC | RC | MIN |
|---------------|-----------------|--------------|-----------|-----------|----------|----------|----------|----------|-------------|----------|-------------|----------|------------|----------|----------|-------------|
| 08/25/2022 | Seattle U | 1-3 | * | * | 0 | 0 | 0 | 0 | .000 | 0 | .000 | 0 | 0-0 | 0 | 0 | 90 |
| 08/29/2022 | at Michigan St. | 3-2 | * | * | 0 | 0 | 0 | 0 | .000 | 0 | .000 | 0 | 0-0 | 0 | 0 | 90 |
| 09/06/2022 | DePaul | 1-1 | * | * | 0 | 0 | 0 | 0 | .000 | 0 | .000 | 0 | 0-0 | 0 | 0 | 90 |
| 09/10/2022 | at Syracuse | 0-1 | * | * | 0 | 0 | 0 | 0 | .000 | 0 | .000 | 0 | 0-0 | 0 | 0 | 90 |
| 09/16/2022 | at Virginia | 2-1 | * | * | 0 | 0 | 0 | 0 | .000 | 0 | .000 | 0 | 0-0 | 0 | 0 | 90 |
| 09/21/2022 | Chicago St. | 4-0 | * | * | 0 | 0 | 0 | 0 | .000 | 0 | .000 | 0 | 0-0 | 0 | 0 | 90 |
| 09/24/2022 | North Carolina | 0-1 | * | * | 0 | 0 | 0 | 0 | .000 | 0 | .000 | 0 | 0-0 | 0 | 0 | 90 |
| 09/27/2022 | Kalamazoo | 8-0 | * | * | 0 | 0 | 0 | 0 | .000 | 0 | .000 | 0 | 0-0 | 0 | 0 | 45 |
| 09/30/2022 | Boston College | 2-1 | * | * | 0 | 1 | 1 | 0 | .000 | 0 | .000 | 0 | 0-0 | 0 | 0 | 90 |
| 10/05/2022 | at Indiana | 0-1 | * | * | 0 | 0 | 0 | 0 | .000 | 0 | .000 | 0 | 0-0 | 0 | 0 | 90 |
| 10/08/2022 | Louisville | 0-2 | * | * | 0 | 0 | 0 | 0 | .000 | 0 | .000 | 0 | 0-0 | 0 | 0 | 90 |
| 10/14/2022 | at Duke | 0-2 | * | * | 0 | 0 | 0 | 0 | .000 | 0 | .000 | 0 | 0-0 | 0 | 0 | 90 |
| 10/18/2022 | at UIC | 4-2 | * | * | 0 | 0 | 0 | 0 | .000 | 0 | .000 | 0 | 0-0 | 0 | 0 | 90 |
| 10/21/2022 | Virginia Tech | 1-0 | * | * | 0 | 0 | 0 | 0 | .000 | 0 | .000 | 0 | 0-0 | 0 | 0 | 90 |
| 10/25/2022 | Michigan | 3-2 | * | * | 0 | 0 | 0 | 0 | .000 | 0 | .000 | 0 | 0-0 | 0 | 0 | 90 |
| 10/28/2022 | at Pittsburgh | 1-1 | * | * | 0 | 0 | 0 | 0 | .000 | 0 | .000 | 0 | 0-0 | 0 | 0 | 90 |
| Totals | | 30-20 | 16 | 16 | 0 | 1 | 1 | 0 | .000 | 0 | .000 | 0 | 0-0 | 0 | 0 | 1395 |

Player Averages

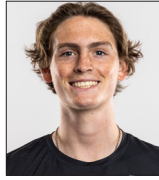
| Games Played | Shots per game | Assists per game | Goals per game | Points per game |
|--------------|----------------|------------------|----------------|-----------------|
| 16 | 0.00 | 0.06 | 0.00 | 0.06 |

| Date | Opponent | SCORE | GP | GS | Minutes | GA | GAAVG | Saves | Save% | W | L | T | SHO/CBO |
|---------------|-----------------|-------|-----------|-----------|----------------|-----------|-------------|-----------|-------------|----------|----------|----------|------------|
| 08/25/2022 | Seattle U | 1-3 | * | * | 90:00 | 3 | 3.00 | 1 | .250 | 0 | 1 | 0 | 0/0 |
| 08/29/2022 | at Michigan St. | 3-2 | * | * | 90:00 | 2 | 2.00 | 3 | .600 | 1 | 1 | 0 | 0/0 |
| 09/06/2022 | DePaul | 1-1 | * | * | 90:00 | 1 | 1.00 | 1 | .500 | 1 | 1 | 1 | 0/0 |
| 09/10/2022 | at Syracuse | 0-1 | * | * | 90:00 | 1 | 1.00 | 7 | .875 | 1 | 2 | 1 | 0/0 |
| 09/16/2022 | at Virginia | 2-1 | * | * | 90:00 | 1 | 1.00 | 7 | .875 | 2 | 2 | 1 | 0/0 |
| 09/21/2022 | Chicago St. | 4-0 | * | * | 90:00 | 0 | 0.00 | 0 | .000 | 3 | 2 | 1 | 1/0 |
| 09/24/2022 | North Carolina | 0-1 | * | * | 90:00 | 1 | 1.00 | 1 | .500 | 3 | 3 | 1 | 0/0 |
| 09/27/2022 | Kalamazoo | 8-0 | * | * | 45:00 | 0 | 0.00 | 0 | .000 | 4 | 3 | 1 | 0/1 |
| 09/30/2022 | Boston College | 2-1 | * | * | 90:00 | 1 | 1.00 | 4 | .800 | 5 | 3 | 1 | 0/0 |
| 10/05/2022 | at Indiana | 0-1 | * | * | 90:00 | 1 | 1.00 | 4 | .800 | 5 | 4 | 1 | 0/0 |
| 10/08/2022 | Louisville | 0-2 | * | * | 90:00 | 2 | 2.00 | 2 | .500 | 5 | 5 | 1 | 0/0 |
| 10/14/2022 | at Duke | 0-2 | * | * | 90:00 | 2 | 2.00 | 2 | .500 | 5 | 6 | 1 | 0/0 |
| 10/18/2022 | at UIC | 4-2 | * | * | 90:00 | 2 | 2.00 | 2 | .500 | 6 | 6 | 1 | 0/0 |
| 10/21/2022 | Virginia Tech | 1-0 | * | * | 90:00 | 0 | 0.00 | 0 | .000 | 7 | 6 | 1 | 1/0 |
| 10/25/2022 | Michigan | 3-2 | * | * | 90:00 | 2 | 2.00 | 0 | .000 | 8 | 6 | 1 | 0/0 |
| 10/28/2022 | at Pittsburgh | 1-1 | * | * | 90:00 | 1 | 1.00 | 7 | .875 | 8 | 6 | 2 | 0/0 |
| Totals | | | 16 | 16 | 1395:00 | 20 | 1.29 | 41 | .672 | 8 | 6 | 2 | 2/1 |

2022 NOTRE DAME MEN'S SOCCER BROADCAST ROSTER



#0 Simone Baravelli
So. • GK • Verona, Italy



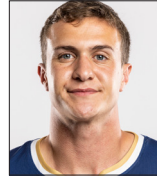
#1 Owen Cornell
Fr. • GK • La Grange, IL



#2 Mitch Ferguson
Fr. • D • Glen Carbon, IL



#3 Reese Mayer
Jr. • D • Baltimore, Maryland



#4 Aaron Hill
Sr. • D • Albuquerque, New Mexico



#5 Kyle Genenbacher
So. • D • Farmington, Missouri



#6 Michael Pellegrino
Sr. • M • Weronah, New Jersey



#7 Ethan O'Brien
Sr. • M • Bellevue, Washington



#8 Matthew Radivoja
Jr. • M • Oakville, Ontario



#9 Eno Nto
So. • F • Derby, England



#10 Matthew McLaughlin
Jr. • M • Broadview Heights, Ohio



#11 Daniel Russo
Jr. • F • Jackson, New Jersey



#12 Daniel Boateng
Fr. • M • Carpinteria, CA/Accra, Ghana



#13 Bryce Boneau
So. • M • Keller, Texas



#14 Mo Williams
GS • D • West Orange, New Jersey



#15 Paddy Burns
So. • D • Crumlin, Northern Ireland



#16 KK Baffour
Fr. • D • Southport, CT/Kumas, Ghana



#17 Mateo Acosta
So. • D • Skokie, Illinois



#18 Josh Ramsey
So. • D • Plano, Texas



#19 Michael Rossi
So. • F • Flen Ellyn, Illinois



#21 Matthew Rouu
So. • F • Germantown, Wisconsin



#22 PJ Bujouves
Sr. • M • Toronto, Ontario



#23 Alex Salvino
Jr. • F • Western Springs, Illinois



#24 Sebastian Green
Fr. • M/D • Monterey, California



#26 Ben Giacobello
GS • F/M/D • Glenview, Illinois



#27 Wyatt Borso
Fr. • F • Aurora, Illinois



#28 Nicholas Legendre
Fr. • F • Rio Rancho



#29 Cleveland Sellers IV
So. • D • Charlotte, NC



#30 Liam Egan
So. • GK • Louisville, Kentucky



#31 Bryan Dowd
Jr. • GK • Willow Springs, Illinois



Chad Riley
Head Coach



Mike Graczyk
Assistant Coach



Jeff Rowland
Assistant Coach



Jamison Edwards
Volunteer Assistant Coach