



WOMEN'S SOCCER

#5 Notre Dame vs. Iowa State

Saturday, Aug. 26, 2006
Alumni Field (Notre Dame, Ind.)



CHRISTIE SHANER



JEN BUCZKOWSKI



AMANDA CINALLI



GAME NOTES – Notre Dame and Iowa State meet today for the first time ... ND is 74-24-2 (.743) in series openers (41-5-0 since '93), with a 49-8-0 mark in all series openers played at home ... the Irish are 40-3-1 in their past 40 games when facing an opponent making its first visit to Alumni Field (since '93) ... ND is riding a 28-game unbeaten streak at home (27-0-1, since end of '03 season) and has won 92% of its all-time home games (180-14-3) ... Iowa State returns 7 starters and 12 of 19 letter winners from its 2005 team that went 11-7-1, finished 2nd in the Big 12 (6-3-1) and suffered postseason losses in the Big 12 quarterfinals and the NCAA first round ... ND's all-time home record vs. teams not ranked in the NSCAA top-25 is 121-4-2 ... ND junior 'keeper Lauren Karas and ISU's Maggie McManehim were teammates on the Dallas Texans, as were ND's Becca Mendoza and ISU's Leslie Hill on the Dallas Sting, and ND's Amber Lattner and Eliza Berzins on the Arsenal club team (in Omaha) ... the Irish are 16-2-0 in season openers, including six straight wins (ND lost the first game of the Randy Waldrum era, a 3-2, double-OT thriller with UNC in 1999) ... nine ND players have been slowed by injuries this fall (most notably Kerri Hanks, Kim Lorenzen and Courtney Rosen) while Brittany Bock and Carrie Dew are competing with the U.S. Under-20 National Team at the U-20 World Championship in Russia (if the U.S. loses Sunday's quarterfinal vs. Germany, Bock and Dew would be back for next weekend's games, as would players from next weekend's opponents, USC and Santa Clara).

2006 ND SCHEDULE

8/16	vs. #8 Virginia (exhib.; Traverse City)	3-0
8/17	Xavier (exhibition)	5-0
8/26	Iowa State	1:00 p.m.
8/27	at Mississippi	noon

Inn at St. Mary's ND Classic

9/1	Santa Clara vs. Harvard	5:00 p.m.
	Notre Dame vs. USC	7:30 p.m.
9/3	USC vs. Harvard	11:00 a.m.
	ND vs. #7 Santa Clara (ESPN-U)	1:30
9/8	at Texas Christian	7:00 p.m.
9/10	at SMU (CSTV)	1:00 p.m.
9/15	*at DePaul	4:00 p.m.
9/17	at Michigan	1:00 p.m.
9/22	*at Cincinnati	7:00 p.m.
9/24	*Louisville	1:00 p.m.
9/29	* #18 West Virginia	7:30 p.m.
10/1	*Pittsburgh	1:00 p.m.
10/6	*Seton Hall	7:30 p.m.
10/8	*Rutgers	1:00 p.m.
10/13	*at #16 Connecticut	7:00 p.m.
10/15	*at Providence	1:00 p.m.
10/20	*at Villanova	4:00 p.m.
10/22	*at Georgetown	1:00 p.m.
10/25-26	BIG EAST First Round (div. 4-vs.-5)	
10/28-29	BIG EAST Quarterfinals (campus sites)	
11/3	BIG EAST Semifinals (at UConn)	
11/5	BIG EAST Final (at UConn)	
11/10-12	NCAA 1st, 2nd Rounds (campus sites)	
11/17-19	NCAA Third Round (campus sites)	
11/24-26	NCAA Quarterfinals (campus sites)	
12/1, 3	NCAA Semifinals and Final (Cary, N.C.)	

* – BIG EAST Conference game

NSCAA Preseason Coaches Poll Team ('06 Record; '05 Record)

- Portland (0-0-1; 23-0-2)
- UCLA (0-1-0; 22-2-2)
- Penn State (1-0-0; 23-0-2)
- North Carolina (0-1-0; 23-1-1)
- 5. Notre Dame (22-3-0)**
- Florida State (20-4-1)
- Santa Clara (1-0-0; 17-5-2)
- Virginia (1-0-0; 18-6-1)
- Texas A&M (1-0-0; 18-4-2)
- California (1-0-0; 16-4-2)
- Boston Coll. (0-1-0; 13-6-2)
- Duke (1-0-0; 14-6-1)
- Illinois (1-0-0; 12-7-3)
- Tennessee (0-1-0; 15-6-2)
- CS Fullerton (19-4-0)
- Connecticut (1-0-0; 15-5-2)
- Arizona (1-0-0; 11-8-3)
- West Virginia (1-0-0; 12-6-3)
- Florida (0-0-1; 13-6-1)
- Pepperdine (1-0-0; 15-4-3)
- Purdue (1-0-0; 11-7-2)
- Vanderbilt (0-0-1; 17-3-3)
- Yale (15-4-1)
- Wake Forest (0-1-0; 9-9-1)
- Marquette (1-0-0; 19-4-1)

Aug. 25

- Portland 1, at Florida 1
- at Penn State 3, UCLA 1
- at Texas A&M 1, North Carolina 0
- at Santa Clara 1, Wake Forest 0
- at Virginia 6, Syracuse 0
- at California 1, Indiana 0
- at Boston Univ. 1, BX 0 (OT)
- at Duke 3, Saint Louis 1
- Illinois 1, S. Carolina 0 (at Mo.)
- Maryland 1, Tennessee 0 (at PSU)
- at Connecticut 4, Hofstra 0
- Arizona 2, at Oakland 1
- West Virginia 3, Richmond 0 (at JMU)
- at Pepperdine 5, Idaho 0
- at Purdue 4, Western Kentucky 1
- Colorado 0, at Vanderbilt 0
- at Marquette 3, Bowling Green 0

Aug. 27

- Portland at Florida State
- UCLA vs. Maryland (at PSU)
- Tennessee at Penn State
- Utah at Santa Clara
- Liberty at Virginia
- BC at Central Connecticut
- Western Carolina at Duke
- Illinois at Missouri
- UTSA at Texas A&M
- Idaho at Cal State Fullerton
- Maine at Connecticut
- Arizona at Michigan
- West Virginia at James Madison
- Kennesaw State at Florida
- Cal Poly at Pepperdine
- San Diego State at Purdue
- Denver at Vanderbilt
- Wake Forest vs. Stan. (at SCU)
- Sacred Heart at Marquette

2006 Notre Dame Women's Soccer



#0 Nikki Westfall
Sr., G • Waterville, OH



#2 Kerri Hanks
So., F • Allen, TX



#3 Kerry Inglis
So., D/M • Fort Wayne, IN



#4 Kim Lorenzen
Sr., D • Naperville, IL



#5 Amanda Cinalli
Jr., F • Maple Hts, OH



#6 Lauren Karas
Sr., G • Flower Mound, TX



#7 Amanda Clark
Fr., M/D • Naperville, IL



#8 Haley Ford
Fr., M/D • Midland, TX



#9 Jen Buczkowski
Sr., M • Elk Grove, IL



#10 Brittany Bock
So., M/F • Naperville, IL



#11 Michele Weissenhofer
Fr., F Naperville, IL



#12 Ashley Jones
Jr., D/M • Westlake Village, CA



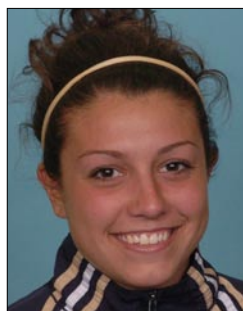
#13 Kelsey Lysander
Fr., G • San Diego, CA



#14 Courtney Rosen
Fr., M • Brecksville, OH



#15 Lizzie Reed
Sr., M/F • Franklin Lakes,



#16 Micaela Alvarez
Fr., M • Cranbury, NJ



#17 Susan Pinnick
Jr., F/M • South Bend, IN



#18 Christie Shaner
Sr., D • Ambler, PA



#19 Carrie Dew
So., D • Encinitas, CA



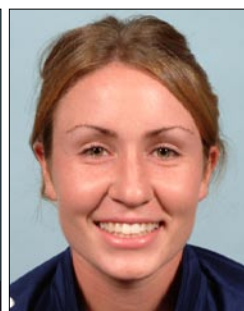
#20 Rebecca Mendoza
So., M • Garland, TX



#21 Claire Gallerano
Sr., M • Dallas, TX



#22 Rachel VanderGenugten
Fr., D • Schereville, IN



#23 Molly Iarocci
Sr., F • Carefree, AZ



#24 Jill Krivacek
Sr., M • Geneva, IL



#26 Ashley Galovic
Fr., D • Plano, TX



#27 Mara Paz de Araujo
Fr., D • Colorado Springs, CO



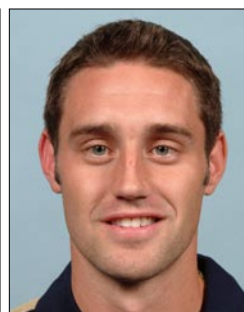
#29 Amber Lattner
Fr., M • Montrose, PA



Randy Waldrum
Head Coach



Dawn Greathouse
Assistant Coaching Staff



Ben Waldrum
Assistant Coaching Staff

2006 Notre Dame Fighting Irish (22-3-0 in 2005)

No.	Name	Pos.	Ht.	Yr.	Hometown / Previous School	2005 Stats (career)
0	Nikki Westfall	G	5-6	Sr.	Waterville, OH / Anthony Wayne HS	3 SV, 5 GP/1 GS (0.19 GAA, 9 SV, 17 GP/1 GS)
2	Kerri Hanks	F	5-6	So.	Allen, TX / Allen HS	28G-15A, 25 GP/22 GS
3	Kerry Inglis	D/M	5-6	So.	Fort Wayne, IN / Snider HS	1A, 8 GP (early-2005 season injur
4	Kim Lorenzen (C)	D	5-8	Sr.	Naperville, IL / Naperville North HS	19 GP/18 GS (3G-4A, 69 GP/59 GS)
5	Amanda Cinalli	F	5-8	Jr.	Maple Heights, OH / Laurel HS	10G-17A, 25 GP/20 GS (20G-22A, 52 GP/41 GS)
6	Lauren Karas	G	5-9	Jr.	Flower Mound, TX / Flower Mound HS	0.60 GAA, 19 SV, 18 GP/9 GS (0.78, 30 SV, 19 GS)
7	Amanda Clark	M/D	5-6	Fr.	Naperville, IL / Neuqua Valley HS	
8	Haley Ford	M/D	5-9	Fr.	Midland, TX / Midland HS	
9	Jen Buczkowski	M	5-7	Sr.	Elk Grove, IL / Elk Grove HS	7G-7A, 25 GP/23 GS (19G-24A, 76 GP/71 GS)
10	Brittany Bock	M/F	5-6	So.	Naperville, IL / Neuqua Valley HS	12G-9A, 24 GP/17 GS
11	Michele Weissenhofer	F	5-4	Fr.	Naperville, IL / Neuqua Valley HS	
12	Ashley Jones	D/M	5-4	Jr.	Westlake Village, CA / Westlake HS	1G-1A, 25 GP/10 GS (2G-5A, 50 GP/16 GS)
13	Kelsey Lysander	G	5-9	Fr.	San Diego, CA / Rancho Bernardo HS	
14	Courtney Rosen	M	5-8	Fr.	Brecksville, OH / Hathaway Brown HS	
15	Lizzie Reed	M/F	5-7	Sr.	Franklin Lakes, NJ / Ramapo Reg. HS	2G-3A, 22 GP/3 GS (5G-6A, 71 GP/20 GS)
16	Micaela Alvarez	M	5-3	Fr.	Cranbury, NJ / Peddle HS	
17	Susan Pinnick	F/M	5-4	Jr.	South Bend, IN / St. Joseph's HS	7G-3A, 24 GP/1 GS (inj. '04)
18	Christie Shaner	D	5-8	Sr.	Ambler, PA / Germantown Academy	5A, 25 GP/24 GS (3G-8A, 75 GP/66 GS)
19	Carrie Dew	D	5-9	So.	Encinitas, CA / La Costa Canyon HS	3G, 25 GS
20	Rebecca Mendoza	M	5-2	So.	Garland, TX / North Garland HS	1G, 15 GP
21	Claire Gallerano	M	5-4	Sr.	Dallas, TX / Ursuline Academy	17 GP/4 GS (37 GP/5 GS)
22	Rachel VanderGenugten	D	5-4	Fr.	Schereville, IN / Lake Central HS	
23	Molly Iarocci	F	5-7	Sr.	Carefree, AZ / Xavier Prep	2A, 6 GP (1 G-2A, 23 GP)
24	Jill Krivacek	M	5-10	Sr.	Geneva, IL / Rosary HS	2G-4A, 18 GP/12 GS (5G-9A, 68 GP/41 GS)
26	Ashley Galovic	D	5-4	Fr.	Plano, TX / Plano East HS	
27	Mara Paz de Araujo	D	5-9	Fr.	Colorado Springs, Co / Air Academy HS	
29	Amber Lattner	M	5-3	Fr.	Montrose, PA / Montrose HS	

Head Coach: Randy Waldrum (8th season)

Assistant Coaches: Dawn Greathouse, Ben Waldrum

Volunteer Assistant Coach: Lindsey Jones (ND '02)

2006 Iowa State Cyclones (11-7-3 in 2005)

No.	Name	Pos.	Ht.	Yr.	Hometown / Previous School (s)	2005 Stats
1	Ann Gleason	G	5-8	Fr.	Stillwater, MN/Stillwater Area HS	
2	Brittanie Waddell	M/F	5-8	Jr.	Urbandale, IA/Urbandale HS	2A, 21 GP/10 GS
3	Elisa Berzins	D/M	5-6	So.	Omaha, NE/Central HS	2A, 10 GP
4	Casey Bothwell	M	5-2	Fr.	Highlands Ranch, CO/Thunder Ridge HS	
5	Hannah Swanbom	M	5-5	So.	Fort Collins, CO/Rocky Mountain HS	1G-2A, 18 GP
6	Amanda Nimtz	F	5-6	Fr.	Allen, TX/Allen HS	
7	Erin Witte	F	5-10	Jr.	Sandy, UT/Hillcrest HS	2G-3A, 21 GP/20 GS
8	Tori Johnson	D/M	5-7	Fr.	Coppell, TX/Coppell HS	
9	Jess Villhauer	M	5-4	Sr.	Shueyville, IA/City HS	2A, 21 GS
10	Elise Reid	M	5-6	Fr.	Cedar Rapids, IA/John F. Kennedy HS	
11	Kate Kirwan	D	5-7	Sr.	Flower Mound, TX/Marcus HS	1A, 21 GS
12	Maggie McManemin	F	5-7	Jr.	Dallas, TX/Episcopal HS	13 GP
13	Molly Lohry	D/M	5-8	Fr.	Sioux City, IA/North HS	
14	Lauren Odino	F	5-5	Fr.	Coppell, TX/R. L. Turner HS	
15	Stephanie Kaphingst	M	5-8	Jr.	Leawood, KS/Blue Valley North HS	4G-1A, 21 GP/20 GS
16	Leslie Hill	F	5-6	So.	Plano, TX/Plano East HS	3G-1A, 21 GP
17	Adrianna O'Neill	D/M	5-9	Fr.	Olathe, KS/South HS	
19	Amanda Purple	D	5-8	So.	Plano, TX/Plano Senior HS	2A, 20 GS
20	Lauren Fader	D	5-10	Fr.	Cincinnati, OH/St. Ursula Academy	
21	Erin Tudor	D/M	5-6	Jr.	Houston, TX/Langham Creek HS	16 GP/1 GS
22	Beth Passman	D	5-8	Jr.	Woodbury, MN/Woodbury HS	1G-1A, 21 GS

Head Coach: Rebecca Hornbacher (5th season)

Assistant Coaching Staff: Scott Ebke, Derek Burton, Dustin Kralik

Irish Set For Another Run At National Title In 2006

By Pete LaFleur

When Randy Waldrum arrived at Notre Dame in 1999, he coached his first Irish team all the way to the national championship game. One year later, his 2000 team claimed the No. 1 ranking and did not lose until the College Cup semifinals. Notre Dame's postseason success then dropped off for a few years before returning in full force with the 2004 national championship season and a dominating 2005 campaign that ended with an NCAA quarterfinal loss to the eventual national champion Portland.

Now, with his eighth season on the horizon, Waldrum is looking to guide his team to a third straight elite-level season. Eight starters lead the way for a group of 17 veterans, as the Irish could be well-positioned to make another run at the program's third national title.

Notre Dame lost four key regulars – All-Americans Katie Thorlakson (forward) and Candace Chapman (right back), along with the Academic All-America duo of goalkeeper Erika Bohn and midfielder Annie Schefter – from the 2005 team that went 22-3-0, led the nation in scoring (4.40 goals per game) and allowed just 54 shots on goal all season. Top returners include two other All-Americans, senior midfielder Jen Buczkowski and sophomore forward Kerri Hanks, who both were among the final-15 candidates for the 2005 Hermann M.A.C. Trophy.

Six others return who have received all-BIG EAST honors, among them: versatile senior defender Christie Shaner, senior midfielder Jill Krivacek, junior forward Amanda Cinalli, sophomore midfielder Brittany Bock, sophomore central defender Carrie Dew and senior utility player Lizzie Reed. The only returning starter who has yet to be honored by the BIG EAST is the highly underrated Kim Lorenzen, a senior center back who will serve as the team's solo captain in 2006.

Top candidates to fill the open starting spots include three juniors: forward Susan Pinnick, outside back Ashley Jones and goalkeeper Lauren Karas. The 'keeper position is most up-for-grabs, with senior Nikki Westfall and freshman Kelsey Lysander also firmly in the mix.

Four of the other incoming freshmen figure to play key roles in the 2006 season, with that group including longtime teammates Michele Weissenhofer (forward) and Amanda Clark (defender/midfielder), battle-tested midfielder Courtney Rosen and versatile defender Haley Ford.

Hanks and Buczkowski again were among the 25 players named to the Hermann Trophy watch list for 2006, with Hanks also collecting various preseason All-America honors (plus BIG EAST preseason offensive player of the year). Those players were joined by Shaner (the league's preseason defensive player of the year), Cinalli and Bock in comprising five of the 11 players who were named to the 2006 preseason all-BIG EAST team.

The Irish enter the 2006 season ranked fifth in the NSCAA coaches poll, fielding a roster that has tightened up a bit on its geographical reach. The team now includes six players from Texas (most notably Hanks, Ford and Karas) while six all hail from Chicago: the senior trio of Buczkowski, Krivacek

and Lorenzen, plus the former Neuqua Valley High School teammates Bock, Clark and Weissenhofer. The roster also includes three players from southern California – Jones, Dew and Lysander – who all could find themselves in the starting lineup.

The eight-member senior class has set a leadership tone since their arrival early in the fall of 2003, combining to log 408 career games played while helping the Irish win nearly 90 percent of their games (67-7-2) during the past three seasons. As they look down upon the current freshman class, there could be a parallel to the 2003 season when four of the current seniors (Buczkowski, Krivacek, Lorenzen and Shaner) served as regulars on that talented team.

Waldrum traditionally has recruited versatile players and has not been hesitant to utilize position shifts and altered formations in order to maximize the roster's personnel. But to achieve the needed results, he knows that it requires the full commitment of the team.

"In this program, as with many of the other top teams, you will have stars come in and end up being reserves. The success of that situation is dependent on how both the coaches and players handle it," says Waldrum.

"In the past few years, our players have done a great job of buying into this philosophy and the resulting success speaks for itself. Another byproduct of our great depth is that it keeps us fresh on a weekly basis and also in the postseason, as you are less likely to see players breaking down at the end of the year."

Notre Dame's 2006 squad boasts three veterans (Buczkowski, Cinalli and Hanks) who have played with the U.S. Under-21 National Team, two others – Bock and Dew – who will be reporting a couple weeks late after wrapping up play with Team USA at the Under-20 World Championship, and another (Rosen) who is a product of the Under-17 National Team.

The Irish also head into 2006 looking to maintain an academic tradition within the program that just keeps getting better and better, with the team's 3.42 GPA in the 2006 semester representing the best among Notre Dame's 26 varsity programs. Several players will be top candidates for Academic All-America honors, led by Jones and her 3.96 cumulative GPA as an accounting major.

Notre Dame takes several noteworthy streaks into the 2006 season, having scored in 36 straight games (second-longest in the program's history) while winning 28 straight times at Alumni Field and going unbeaten at home versus BIG EAST teams in 66 straight (65-0-1, since 1995). The Irish also have not lost in 19 consecutive overtime games (14-0-5, since '99) while the seniors have yet to play a game in which the Irish were outshot, a span of 76 games.

