



NOTRE DAME

Women's Basketball 2005-06

2001 NCAA Champions • 1997 NCAA Final Four
6 NCAA Sweet 16 Berths • 12 NCAA Tourney Appearances

2005-06 ND Women's Basketball: Game 27

Notre Dame Fighting Irish (16-10 / 7-8 BIG EAST) vs.
Pittsburgh Panthers (18-8 / 9-6 BIG EAST)

- ◆ **DATE:** February 28, 2006
- ◆ **TIME:** 7:00 p.m. ET
- ◆ **AT:** Notre Dame, Ind.
Joyce Center (11,418)
- ◆ **SERIES:** Notre Dame leads 15-0
- ◆ **1ST MTG:** 2/7/96 (ND 90-51)
- ◆ **LAST MTG:** 2/5/05 (ND 75-47)
- ◆ **RADIO:** ESPN Radio 1580 AM
www.und.com
- ◆ **TV:** None
- ◆ **LIVE STATS:** www.und.com
- ◆ **TICKETS:** (574) 631-7356



Storylines

- ◆ Notre Dame appears to have regained its offensive touch in the past two games, averaging 72.5 ppg. with a .509 field goal percentage (54-of-106) in wins at West Virginia and Cincinnati.
- ◆ The Irish will honor their seniors in a ceremony prior to Tuesday night's game against Pittsburgh. Notre Dame is 23-5 (.821) all-time on Senior Night, including a 16-2 (.889) record in the **Muffet McGraw** era.

After four seasons of numerous contributions and memorable moments, Notre Dame senior co-captains **Megan Duffy** and **Courtney LaVere** will take the Joyce Center hardwood for the final time when the Irish play host to Pittsburgh Tuesday at 7 p.m. (ET). Duffy and LaVere, as well as senior managers **Meghan Callahan** and **Luke Hoover**, and senior video assistant **Janelle Tretter**, all will be honored in a pregame ceremony.

Notre Dame (16-10, 7-8 BIG EAST) has won its last two games and is coming off a stirring 75-66 overtime victory at Cincinnati on Saturday afternoon. Sophomore guard **Tulyah Gaines** was the hero, sinking the game-tying basket at the horn in regulation on the way to her first career double-double (14 points, 11 rebounds).

Duffy and LaVere also played a major role in the win over the Bearcats, sharing team-high scoring honors with 17 points each.

Rankings

- ◆ Notre Dame is not ranked.
- ◆ Pittsburgh is not ranked.

Web Sites

- ◆ Notre Dame: <http://www.und.com>
- ◆ Pittsburgh: <http://www.pittsburghpanthers.com>
- ◆ BIG EAST: <http://www.bigeast.org>

Setting The Standard

Under the guidance of 19th-year head coach **Muffet McGraw**, Notre Dame has evolved into one of the country's leading women's basketball powers. The Irish have appeared in 12 NCAA Tournaments (including the past 10 in a row) and advanced to the NCAA Sweet 16 six times in the past nine years. Notre Dame also has reached the NCAA Women's Final Four twice, winning college basketball's ultimate prize with the 2001 national championship.

In its history, Notre Dame has developed eight All-Americans, eight WNBA players (including five draft picks in the past five years) and four USA Basketball veterans (eight medals won). Now in their 29th season in 2005-06, the Irish own an all-time record of **591-264 (.691)**.

Notre Dame Head Coach Muffet McGraw

Saint Joseph's '77

- ◆ 19th season at Notre Dame
- ◆ 427-165 (.721) at Notre Dame.
- ◆ 515-206 (.714) in 24 years as head coach.

NOTES

- ◆ 2001 consensus National Coach of the Year
- ◆ Four-time Naismith Coach of the Year finalist
- ◆ Four-time conference Coach of the Year
 - BIG EAST Conference (2001)
 - Midwestern Collegiate Conference (1991)
 - North Star Conference (1988)
 - East Coast Conference (@ Lehigh) (1983)

2005-06 Schedule

16-10 / 7-8 BIG EAST

N1	Indianapolis (exhibition)	W, 84-59
N10	Ferris State (exhibition)	W, 96-45
N18	(15/16) Michigan	W, 55-45
N20	(15/16) @ Western Michigan ^{CL}	W, 71-68
N23	(13/15) @ Indiana	W, 74-61
N27	(13/15) USC ^{CL} (24/21)	W, 73-62
N29	(11/12) Iona	W, 74-55
D4	(11/12) @ Wisconsin	W, 77-72
D7	(10/10) @ Purdue (24/23)	L, 54-65
D17	(13/14) vs. Arkansas St. ¹	W, 77-54
D18	(13/14) vs. Utah ¹ (22/21)	W, 68-55
D28	(12/11) Valparaiso	W, 58-50
D31	(12/11) Tennessee ^{CSTV} (1/1)	L, 51-62
J4	(12/12) • @ St. John's	L, 63-66
J7	(12/12) • Seton Hall	L, 61-74
J10	(20/19) • Marquette	W, 67-65 ^{OT}
J14	(20/19) • @ Louisville	L, 51-61
J17	(24/22) • DePaul ^{CSTV} (10/10)	W, 78-75
J21	(24/22) • @ Georgetown	W, 54-52
J24	(21/21) • @ Rutgers ^{CSTV} (10/9)	L, 43-69
J28	(21/21) • South Florida	L, 64-68 ^{OT}
J31	• @ Syracuse	W, 67-55
F4	• Providence	W, 66-48
F7	• Villanova ^{ESPNU}	L, 65-69 ^{OT}
F12	• @ DePaul ^{ESPN2} (17/15)	L, 50-79
F19	• Connecticut ^{ESPN2} (8/6)	L, 64-79
F22	• @ West Virginia	W, 70-58
F25	• @ Cincinnati ^{BETV}	W, 75-66 ^{OT}
F28	• Pittsburgh	7:00 ET
M4	BIG EAST First Round ²	TBD
M5	BIG EAST Quarterfinals ²	TBD
M6	BIG EAST Semifinals ²	6/8:00 ET
M7	BIG EAST Championship ²	7:30 ET
M18	NCAA First Round ³	TBD
M19		
M20	NCAA Second Round ³	TBD
M21		
M25	NCAA Regional Semifinals ⁴	TBD
M26		
M27	NCAA Regional Finals ⁴	TBD
M28		
A2	NCAA National Semifinals ⁵	7/9:30 ET
A4	NCAA Championship Game ⁵	8:30 ET

(n) rank in Associated Press/ESPN-USA Today polls; figure before opponent is ND rank, after is opponent's rank

- = BIG EAST Conference game
- 1 = Duel in the Desert (Las Vegas, Nev.)
- 2 = To be played at Hartford (Conn.) Civic Center
- 3 = Hosted at pre-determined sites
- 4 = Regional sites are: Albuquerque, Bridgeport, Cleveland and San Antonio
- 5 = NCAA Women's Final Four (Boston, Mass.)

ESPN2/ESPNU = Game to be televised on ESPN2/ESPNU
CSTV = Game to be televised on College Sports Television
CL = Game televised on Comcast Local
BETV = Game televised on BIG EAST TV package

All times local to site and subject to change

Notre Dame's Probable Starting Lineup

No	Name	Pos	Ht	Yr	PPG	RPG	Other	Notes
41	Courtney LaVere (C)	F	6-3	Sr.	8.6	4.2	1.5 bpg	• 10.0 ppg., .583 FG% as starter in past 9
1	Tulyah Gaines	G	5-7	So.	4.6	3.0	1.4 apg	• First career dbl-dbl (14p, 11r) at UC
13	Megan Duffy (C)	G	5-7	Sr.	15.7	3.8	4.2 apg	• 2-time BIG EAST Player of the Week
24	Lindsay Schrader	G	6-0	Fr.	9.4	5.5	1.8 apg	• Dbl.-fig. scorer in 5 of past 8 (11.5 ppg.)
32	Breona Gray	G	5-9	Jr.	5.0	2.3	1.2 apg	• One of 3 players with 12 pts. vs. UConn

Off the Bench For the Irish

2	Charel Allen	G	5-11	So.	8.4	4.3	1.4 apg	• Dbl.-fig. points 6 of past 8 (10.3 ppg.)
11	Amanda Tsipis	G	5-9	So.	0.0	0.0	0.0 apg	• Solid perimeter threat (6 games played)
21	Chandrica Smith	F	6-1	Fr.	1.8	1.8	0.4 spg	• Season-high 9 pts., 10 rebs. at Rutgers
33	Melissa D'Amico	C	6-5	So.	6.5	4.2	1.2 bpg	• Eighth in BIG EAST in blocked shots
34	Crystal Erwin	F	6-2	Jr.	5.0	5.2	1.0 apg	• Perfect at WVU (10p, 4-4 FG, 2-2 FT)

(c) = indicates team captain





A Quick Look At The Fighting Irish

One of the more famous movie quotes of the past 20 years came from a simple Alabama man named Forrest Gump, who recalled his mother's advice that "life is like a box of chocolates — you never know what you're going to get."

In some ways, that philosophy would be appropriate when it comes to describing the 2005-06 season for Notre Dame. Despite losing two of their top three scorers and two primary rebounders from a year ago, the Irish bolted to a 9-1 record, highlighted by two wins over Top 25 teams (USC and Utah) as well as the championship at the Duel in the Desert in Las Vegas.

Since that time, Notre Dame has seen its fortunes turn south, losing nine of its last 16 games, including the program's first three-game losing streaks in eight seasons. However, the Irish also did log an key third win over a ranked opponent (78-75 vs. #10 DePaul on Jan. 17) and were ranked in every AP and ESPN/USA Today coaches' poll for the first two months of the season.

One of the critical elements for the Irish to be successful this season has been offensive balance. On 20 occasions (including each of the past eight games), Notre Dame has had at least three players scoring in double figures (going 14-6), and eight separate players have cracked double digits at least three times this year. Additionally, six different players have led the team in scoring at some point.

The Irish also have the benefit of strong leadership in senior All-America point guard and two-year team captain **Megan Duffy**. The

5-foot-7 Dayton, Ohio, native spent last summer as a co-captain and starter on the United States World University Games Team that rolled to the gold medal with a 7-0 record. Duffy directed an American offense that averaged 97.4 points per game and set a USA World University Games record with a scoring margin of +43.1 ppg.

Back stateside, Duffy continues to make improvements in her game each night out and has been a strong all-around contributor and leader for Notre Dame once again this year. The veteran floor general is averaging a team-best 15.7 points, 4.19 assists and 2.00 steals per game, with a 1.73 assist/turnover ratio, ranking among the top 10 in the BIG EAST in all four categories. In addition, she leads the league and ranks 11th in the nation in foul shooting (.894). She also has led the team in scoring 14 times and in assists 18 times this year.

Among her many honors this year, Duffy is one of 11 nominees for the Nancy Lieberman Award (top point guard in the nation), a mid-season candidate for the Naismith Trophy, a first-team academic all-district honoree, a two-time BIG EAST Player of the Week selection (Jan. 23, Feb. 27), a three-time BIG EAST Weekly Honor Roll choice, and was named to the Duel in the Desert (Gray Division) All-Tournament Team. She has scored in double figures in her last 11 games, the longest such streak of her career.

Freshman guard **Lindsay Schrader** has shown tremendous promise in her first season with the Irish. The former McDonald's All-American already has been named BIG EAST Freshman of the Week once (Nov. 21) after turning in an impressive 10-point, 14-rebound effort in her debut outing against Michigan, becoming just the second player in school history (first since 1979) to record a double-double in her first game. She also earned a spot on the Dec. 5 BIG EAST Weekly Honor Roll, the first freshman to appear on that list this season. Schrader is second on the team in scoring (9.4 ppg.) and tops in rebounding (5.5 rpg.), and has scored in double figures five times in the past eight games (11.5 ppg. in that time), including a season-high 24 points at Syracuse on Jan. 31.

Sophomore guard **Charel Allen** and senior forward **Courtney LaVere** also have shown signs of being dependable options for the Irish. LaVere ranks third on the team in scoring (8.6 ppg.), with Allen fourth (8.4 ppg.), while Allen is third in rebounding (4.3 rpg.), and LaVere is tops in both field goal percentage (.516) and blocks (1.46 bpg.), tying for fifth in the BIG EAST in the latter category. LaVere was named to the BIG EAST Weekly Honor Roll on Feb. 6, and both players have come alive in recent games. Allen is on a run of six double-figure scoring games in her last eight outings, averaging 10.3 ppg. in that stretch. Meanwhile, LaVere is averaging 10.0 ppg. with a .583 field goal percentage returning to the starting lineup on Jan. 24.

Potent Notables About The Fighting Irish

- Notre Dame's departure from the Jan. 30 Associated Press poll snapped a string of 30 consecutive appearances for the Irish in that survey, dating back to the start of the 2004-05 season. All told, Notre Dame has appeared in 139 Associated Press polls

Covering the Irish

Notre Dame Sports Information

C112 Joyce Center, Second Floor
Notre Dame, IN 46556
phone (574) 631-7516 // fax (574) 631-7941
Chris Masters, Asst. Sports Information Director (WBB)
masters.5@nd.edu // cell (574) 532-4166

Media Services

The official Notre Dame athletics web site contains schedules, rosters, updated statistics and some historical information from previous seasons. High-resolution color headshots and action photos of Notre Dame players, coaches and staff are available upon request.

Official Notre Dame athletics web site:

- <http://www.und.com>

In-Season Interview Policy

All requests for Notre Dame player, coach or staff interviews must be made through **Chris Masters** and 24 hours' notice is appreciated. Please be aware that student-athletes' academic obligations always take precedence before any interview requests.

Media members also may speak to Irish team personnel before or after practice sessions. While most practices are open to the media, some may be closed at the coaching staff's discretion — contact **Chris Masters** for the latest practice schedule and availability.

On game days, no interviews will be granted with any Notre Dame player or coach prior to competition.

Credentials / Parking

Season credentials will be issued to all media covering the Irish on a regular basis. Please note — any Notre Dame men's basketball season credentials also offer access to all Irish women's basketball games.

For single-game credentials, contact **Chris Masters** no less than 24 hours before tipoff. Credential requests must be submitted via fax on official letterhead. Passes are left at the media will call entrance (Gate 1) of the Joyce Center.

Parking is free for all Irish women's basketball games.

Credentials remain the property of the University of Notre Dame and may be revoked at any time.

Game Notes

Notre Dame's game notes package is completed and made available on-line through the official Irish athletics web site during the season, usually at least one day prior to tipoff. Notre Dame's game notes are in Adobe PDF format and will be distributed via *electronic means only* (e-mail or web). Fax distribution is by request only.

Please contact **Chris Masters** if you wish to be added to the e-mail distribution list for Notre Dame's regular women's basketball release.

Gameday Services

Gameday packages containing game notes, flipcards and other information will be available on press row prior to all home contests. A pre-game meal also is served in the arena level media room (exit court via Gate 8 ramp behind visitors' bench, make first right, enter first door on right) beginning 75 minutes before tipoff.

A bank of statistics monitors is located on press row for the media's convenience. Final statistics books include an official NCAA box score and play-by-play. Telephone, copier and fax services are available on a first-come, first-served basis. The Joyce Center also offers wireless Internet capability — check with **Chris Masters** for access.

Post-Game Press Conferences

Following each Notre Dame home game, Irish head coach Muffet McGraw and selected players, followed by the visiting head coach and selected players, will be available to speak with the media. Post-game press conferences are held in the Joyce Center auditorium, located near Gate 1 on the first floor of the arena (exit floor via Gate 1 ramp to right of press row, go straight and turn right at WBB office).

Media members should submit player requests for post-game interviews to **Chris Masters** at the final media timeout of the second half.

LAST IRISH GAME

Notre Dame 75, Cincinnati 66 (OT)
February 25, 2006
Fifth Third Arena (Cincinnati, Ohio)

Notre Dame (75)

Player	min	fg-a	3fg-a	ft-a	reb	ast	pf	tp
LaVere	38	8-11	0-0	1-3	7	2	2	17
Gaines	34	3-7	0-0	8-9	11	4	4	14
Duffy	43	4-8	1-2	8-8	4	3	2	17
Schrader	28	5-8	0-0	1-2	2	4	1	11
Gray	24	1-3	1-2	0-0	2	2	2	3
Allen	30	2-12	0-0	1-4	3	2	3	5
Tsipis	0+	0-0	0-0	0-0	0	0	0	0
Smith	0+	0-0	0-0	0-0	0	0	0	0
D'Amico	12	2-2	0-0	0-0	4	0	1	4
Erwin	16	2-4	0-0	0-0	3	0	2	4
Team					2			
Totals	225	27-55	2-4	19-26	38	17	17	75

Cincinnati (66)

Player	min	fg-a	3fg-a	ft-a	reb	ast	pf	tp
Jones	32	5-14	0-0	1-2	9	1	4	11
Stephens, A.	7	1-3	0-0	0-0	3	0	0	2
Harvey	31	0-8	0-4	2-2	1	5	3	2
Bellman	40	4-14	1-5	1-2	8	2	1	10
Humphries	37	6-15	0-3	2-5	5	3	5	14
May	2	0-1	0-0	0-0	0	0	2	0
Ogide	5	0-2	0-0	2-2	1	0	1	2
Roudebush	5	0-0	0-0	0-0	2	0	0	0
Morgan	20	2-4	0-0	0-0	2	0	3	4
Twehues	28	4-9	3-7	3-3	4	1	4	14
Stephens, J.	18	2-3	1-1	2-2	4	0	1	7
Team					2			
Totals	225	24-73	5-20	13-18	41	12	24	66

Notre Dame	28	29	18	--	75
Cincinnati	24	33	9	--	66

FG Pct: Notre Dame 49.1, Cincinnati 32.9. **3-PT FG Pct:** Notre Dame 50.0, Cincinnati 25.0. **FT Pct:** Notre Dame 73.1, Cincinnati 72.2. **Turnovers:** Notre Dame 14, Cincinnati 11. **Blocked Shots:** Notre Dame 5 (LaVere 4), Cincinnati 2. **Steals:** Notre Dame 5 (Allen 2), Cincinnati 7 (Bellman 2). **Attendance:** 1,072.





Around the BIG EAST

Current Standings

Table with columns: BIG EAST (W, L), Overall (W, L). Rows include Rutgers, Connecticut, DePaul, St. John's, Louisville, Pittsburgh, South Florida, Villanova, Marquette, NOTRE DAME, Cincinnati, West Virginia, Georgetown, Providence, Seton Hall, Syracuse.

Through games of Feb. 26
(n) Ranking in Associated Press/ESPN-USA Today polls
(AP poll of Feb. 27 // ESPN/USA Today poll of Feb. 21)

Player of the Week

- Nov. 21 Mel Thomas, Connecticut
Nov. 28 Jessica Dickson, South Florida
Dec. 5 Vaida Sipaviciute, Syracuse
Dec. 12 Jessica Dickson, South Florida
Dec. 19 Melissa D'Amico, Notre Dame
Dec. 27 Meg Bulger, West Virginia
Jan. 2 Cappie Pondexter, Rutgers
Jan. 9 Khara Smith, DePaul
Jan. 16 Cappie Pondexter, Rutgers
Jan. 23 Megan Duffy, Notre Dame
Jan. 30 Barbara Turner, Connecticut
Feb. 6 Cappie Pondexter, Rutgers
Feb. 13 Cappie Pondexter, Rutgers
Feb. 20 Khara Smith, DePaul
Feb. 27 Megan Duffy, Notre Dame

Freshman of the Week

- Nov. 21 Lindsay Schrader, Notre Dame
Nov. 28 Xenia Stewart, Pittsburgh
Dec. 5 Jenny Eckhart, Syracuse
Dec. 12 Chelsea Marandola, Providence
Dec. 19 Michelle Jones, Cincinnati
Dec. 27 Chelsea Marandola, Providence
Jan. 2 Katrina Wheeler, Georgetown
Jan. 9 Shantel Brown, Seton Hall
Jan. 16 Renee Montgomery, Connecticut
Jan. 23 Krystal Ellis, Marquette
Jan. 30 Shelly Bellman, Cincinnati
Feb. 6 Renee Montgomery, Connecticut
Feb. 13 Krystal Ellis, Marquette
Feb. 20 Shelly Bellman, Cincinnati
Feb. 27 Angel McCoughtry, Louisville

Upcoming BIG EAST Games

- Monday, February 27
• Connecticut at Rutgers 7:30p
Tuesday, February 28
• Pittsburgh at Notre Dame 7:00p
• Providence at Louisville 7:00p
• Seton Hall at St. John's 7:00p
• South Florida at Georgetown 7:30p
• Villanova at West Virginia 7:30p
• Syracuse at DePaul 8:00p
• Cincinnati at Marquette 8:00p

END OF REGULAR SEASON

* = indicates BIG EAST Conference game
All times Eastern and subject to change



since the balloting debuted 30 years ago, with their first AP ranking (No. 25) coming on Dec. 31, 1990.

- With its No. 10 AP ranking on Dec. 5, the Irish have appeared in the top 10 of the media balloting at some point in seven of the past 10 years (including three of the past four seasons). Notre Dame has spent a total of 73 weeks in the AP top 10 during the program's 29-year history and owns a 110-21 (.840) record when it's ranked in the top 10.
The Irish have won 57 of their last 61 non-conference home games, dating back to the 1994-95 season. Three of the losses in that span have come against Big Ten Conference opponents (Wisconsin in 1996, Purdue in 2003, Michigan State in 2004), with the other coming back on Dec. 31 vs. No. 1 Tennessee.
The Irish defense continues to be its calling card. In each of the past six seasons, Notre Dame has held its opponents to an average of less than 62 points per game, including a 56.8 ppg. mark last year, which ranked as the third-lowest opponent scoring average in school history and second-best of the Muffet McGraw era (55.8 ppg. in 2000-01). Thus far in 2005-06, the Irish are slightly over their six-year average, allowing opponents to score 62.8 ppg.
The Irish are 3-5 against ranked teams this season and have posted 40 wins over Top 25 opponents in the past eight seasons (1998-99 to present), most recently knocking off No. 10/10 DePaul, 78-75 on Jan. 17 at the Joyce Center. In each of the past two years, Notre Dame has set a school record with seven regular-season wins over ranked opponents. Furthermore, since the start of the 2003-04 season, the Irish are 12-4 (.750) at home against Top 25 competition (2-2 this year).
Drawing 8,193 fans to their Feb. 19 game vs. Connecticut (the 13th-largest crowd in school history and second-biggest of the season), the Irish now have welcomed crowds of 5,000 or more fans to 77 of their last 79 home games. The only two blemishes on that mark came in the semifinals and finals of last year's Preseason WNIT, because tickets for those games could not be included in the Notre Dame season ticket package and had to be purchased separately.
The capacity crowd of 11,418 for the Dec. 31 home game vs. top-ranked Tennessee was the third sellout in program history and the 19-day advance sellout was the quickest in the 29-year history of Irish women's basketball. As of Feb. 27, Notre Dame ranks 11th in the country in average home attendance with 6,682 fans per game.
Senior guard Megan Duffy was named a preseason All-American by three sources,

Table: ND Opponent PPG Since 1999-2000. Rows: 2004-05 (56.8), 2003-04 (58.5), 2002-03 (61.2), 2001-02 (57.8), 2000-01 (55.8*), 1999-00 (61.9), 6-year avg. (58.6 ppg.). * = McGraw-era record

was cited on the preseason watch lists for both the State Farm/WBCA Wade Trophy and the John R. Wooden Women's Award, and was tabbed as one of the top five point guards in the nation by ESPN.com. Duffy also was a preseason all-BIG EAST Conference selection, following up her first-team all-league citation last year.

- With a 55-45 victory over Michigan on Nov. 18, Irish head coach Muffet McGraw became the 27th coach in NCAA Division I women's basketball history to reach the 500-win mark. She also is the 10th Division I coach to earn her 500th victory prior to age 50. McGraw reached another milestone on Nov. 29 vs. Iona with her 700th career game as a head coach.

A Quick Look At Pittsburgh

Without question, Pittsburgh (18-8, 9-6) has emerged as the most improved team in the BIG EAST Conference this season. Currently tied for fifth place in the league standings, the Panthers, who were picked to finish 13th in the preseason poll of conference coaches, already have five more wins than all of last year and are aiming for their first 10-win BIG EAST season since 1994-95 (10-8).

Pitt has won six of its last eight games entering Tuesday night's regular-season finale at Notre Dame. However, the Panthers dropped their last contest, 65-50 to No. 7/8 Rutgers at home on Saturday. Sophomore center Marcedes Walker did all she could, finishing with 24 points and 10 rebounds to pick up her 11th double-double of the season (and eighth in the past 10 games). Junior guard Mallorie Winn added 12 points and senior forward Cheron Taylor shared team-high honors with 10 rebounds for Pitt, which won the rebounding battle, 39-35, but shot 30.4 percent from the floor in the loss.

Walker, a preseason all-BIG EAST selection this year, has lived up to that billing, ranking among the conference leaders in scoring (4th - 17.6 ppg.), rebounding (2nd - 9.3 rpg.) and field goal percentage (9th - .491). Winn, who sat out last season after transferring from Georgia Tech, has made an immediate impact for the Panthers, placing ninth in the BIG EAST in both scoring (15.2 ppg.) and assists (3.96 apg.). In addition, Taylor is 10th in the league in rebounding (7.6 rpg.) and freshman guard Xenia Stewart also is scoring in double figures (10.3 ppg.) this year.

Agnus Berenato is in her third season as the head coach at Pitt, having built a 37-43 (.463) record at the school. Including prior tenures at both Rider and Georgia Tech, Berenato has a career record of 320-307 (.510) in 22 years of coaching. She is 0-3 all-time vs. Notre Dame.

The Notre Dame-Pittsburgh Series

Notre Dame and Pittsburgh did not face one another prior to the Irish joining the BIG EAST Conference in 1995-96. However, since then, the series with the Panthers has been one of the more frequent matchups on Notre Dame's league schedule. The Irish have a 15-0 record all-time against Pitt, including a 6-0 mark at the Joyce Center.

Notre Dame first played the Panthers on Feb.



7, 1996 in South Bend, collecting a 90-51 win at the Joyce Center. To this day, the 39-point margin remains the largest by either side in the series.

That victory was the first of five in a row by double digits for the Irish against Pittsburgh. That changed when the Panthers battled Notre Dame all the way in an 81-72 victory on Jan. 16, 1999, starting a run where eight of nine series games were decided by 14 points or less.

The closest stretch of games in that span came in a four-game period from 2002-04. Pitt steadily closed the margin from 12 points down to the slimmest spread of the 15-game series, a 72-68 Irish win on Feb. 21, 2004 in Pittsburgh. Notre Dame came back last year with a 75-47 victory, also at the Petersen Events Center, marking the largest margin in the series in nine years.

Other Notre Dame-Pittsburgh Series Tidbits

- Pittsburgh is one of two BIG EAST Conference opponents Notre Dame has played at least five times and has never lost to. The other is Providence, with the Irish now 14-0 all-time against the Friars after a 66-48 win back on Feb. 4 at the Joyce Center.
- Ten of the 15 series games have been decided by double digits, but only five of the past 10 have had margins exceeding 10 points.
- The series shifts back to Notre Dame for the first time since Feb. 26, 2003 (a 77-69 Irish win) and just the second time in seven games, dating back to the late stages of the 2000-01 season.
- This year's matchup marks the second time Notre Dame has closed out the regular season against Pittsburgh. On Feb. 27, 2001, the Irish clinched a share of their first-ever BIG EAST Conference regular-season title with an 82-63 victory at Pittsburgh.
- Notre Dame has scored 65 or more points in each of its 15 meetings with Pitt, while the Panthers have reached that standard five times against the Irish, including three of the past four games. The Notre Dame offense has been even more potent in the past four games, topping 70 points on each occasion.
- The two head coaches in Tuesday night's game have faced one another on the sidelines eight times during the past 25 seasons. Irish head coach **Muffet McGraw** is 8-0 in these contests with Pitt skipper **Agnus Berenato**, with the first five games coming when McGraw was at Lehigh and Berenato at Rider in the early 1980s.
- Notre Dame sophomore guard **Charel Allen** is a native of Monessen, Pa., located not far from Pittsburgh, and graduated from Monessen High School in 2004. Allen is one of leading scorers in Pennsylvania high school history, having piled up 3,110 points during her storied prep career.
- First-year Notre Dame coordinator of basketball operations **Stephanie Menio** graduated from Pittsburgh in 2004 with a degree in business administration. During her time there, Menio spent two years as a marketing

Notre Dame In the Polls

Associated Press Poll

Week	Points	Rank	Weeks Ranked	
			05-06	All Time
Preseason	408	15	1	129
Nov. 21, 2005	516	13	2	130
Nov. 28, 2005	654	11	3	131
Dec. 5, 2005	705	10	4	132
Dec. 12, 2005	575	13	5	133
Dec. 19, 2005	615	13	6	134
Dec. 26, 2005	662	12	7	135
Jan. 2, 2006	609	12	8	136
Jan. 9, 2006	256	20	9	137
Jan. 16, 2006	97	24	10	138
Jan. 23, 2006	225	21	11	139
Jan. 30, 2006	44	—	—	—
Feb. 6, 2006	31	—	—	—
Feb. 13, 2006	9	—	—	—
Feb. 20, 2006	0	—	—	—
Feb. 27, 2006	0	—	—	—
SEASON HIGHS	705	10		

ESPN/USA Today Coaches' Poll

Week	Points	Rank	Weeks Ranked	
			05-06	All Time
Preseason	288	15	1	120
Nov. 15, 2005	294	16	2	121
Nov. 22, 2005	292	15	3	122
Nov. 29, 2005	374	12	4	123
Dec. 6, 2005	444	10	5	124
Dec. 13, 2005	372	14	6	125
Dec. 20, 2005	407	12	7	126
Dec. 27, 2005	441	11	8	127
Jan. 3, 2006	415	12	9	128
Jan. 10, 2006	203	19	10	129
Jan. 17, 2006	97	22	11	130
Jan. 24, 2006	139	21	12	131
Jan. 31, 2006	29	—	—	—
Feb. 7, 2006	4	—	—	—
Feb. 14, 2006	10	—	—	—
Feb. 21, 2006	0	—	—	—
SEASON HIGHS	444	10		

assistant with the Panther women's basketball program, and in conjunction with the debut of the new Petersen Events Center, she aided in the program's 114-percent increase in attendance from 2002-04 and the first women's basketball sellout in school history (12,632 vs. Connecticut on Jan. 25, 2003).

The Last Time Notre Dame And Pittsburgh Met

The fans drawn by **Charel Allen** almost made it seem like a home game for Notre Dame. **Courtney LaVere** made certain it wasn't a game at all once Pitt's leading scorer got into foul trouble.

LaVere came off the bench to lead No. 6/7 Notre Dame's pivotal 14-0 run late in the first half and the Fighting Irish went on to their seventh consecutive victory, beating Pittsburgh 75-47 on Feb. 5, 2005 at the Petersen Events Center.

LaVere scored 11 of her 17 points in the first half to help Notre Dame (20-3, 8-2 BIG EAST) turn a 24-18 lead into a 38-18 advantage over a five-minute stretch in which Pitt star **Marcodes Walker** drew her third foul.

Walker had 13 points and 11 rebounds before fouling out with 6:32 remaining for Pitt (11-10, 3-7).

Allen also didn't start but scored 16 points

National Polls

Associated Press Poll

• February 27, 2006: Poll #15

Team	Rec	Pts	LW
1 North Carolina (46)	26-1	1,150	2
2 Duke	25-2	1,072	1
3 LSU	25-2	1,064	3
4 Maryland	26-3	1,004	4
5 Ohio State	25-2	949	6
6 ♦Rutgers	23-3	913	7
7 ♦Connecticut	26-3	877	8
8 ♦Tennessee	25-4	827	5
9 Oklahoma	25-4	824	9
10 Baylor	21-5	715	10
11 Arizona State	23-5	641	11
12 Georgia	20-7	624	13
13 Stanford	21-6	578	15
14 ♦Purdue	22-5	559	12
15 ♦DePaul	23-5	555	16
16 Michigan State	21-8	470	14
17 ♦Utah	20-5	295	19
18 BYU	22-3	264	21
19 Louisiana Tech	21-4	258	20
20 Minnesota	19-8	243	22
21 New Mexico	20-7	178	23
22 Temple	21-7	171	17
23 (tie) Vanderbilt	19-9	133	24
(tie) Florida	20-7	133	—
25 Texas A&M	21-7	112	25

Others Receiving Votes: Bowling Green 78, Boston College 56, Wyoming 32, ♦St. John's 30, George Washington 29, Florida State 18, Kentucky 15, Indiana State 13, Western Kentucky 12, Missouri 11, North Carolina State 11, Chattanooga 10, Tulsa 8, Virginia Tech 8, Old Dominion 6, UCLA 3, Hartford 1.

ESPN/USA Today Coaches' Poll

• February 21, 2006: Poll #15

Team	Rec	Pts	LW
1 Duke (27)	24-1	771	1
2 North Carolina (4)	25-1	742	2
3 LSU	23-2	679	3
4 Maryland	24-3	671	4
5 ♦Tennessee	24-3	639	5
6 ♦Connecticut	24-3	622	6
7 Ohio State	23-2	618	7
8 ♦Rutgers	21-3	580	8
9 Oklahoma	23-4	530	9
10 Baylor	19-5	463	11
11 ♦Purdue	21-4	437	10
12 Georgia	18-7	432	13
13 Arizona State	22-5	379	17
14 ♦DePaul	22-5	374	15
15 Stanford	19-6	364	12
16 Michigan State	20-8	305	14
17 Temple	20-6	195	22
18 BYU	20-3	192	18
19 Boston College	19-8	167	20
20 Louisiana Tech	20-4	153	24
21 Minnesota	17-8	149	16
22 New Mexico	18-7	141	19
23 Vanderbilt	17-9	106	21
24 ♦Utah	19-5	101	—
25 Bowling Green	22-2	68	25

Others Receiving Votes: Texas A&M 45, Chattanooga 28, ♦St. John's 27, Western Kentucky 16, Indiana State 13, Florida 12, Missouri 12, George Washington 11, Tulsa 11, Virginia Tech 8, Kentucky 5, Liberty 2, Old Dominion 2, ♦USC 2, Hartford 1, Miami (Fla.) 1, Wyoming 1.

LW = last week

♦ = 2005-06 Notre Dame opponent





PITT

Pittsburgh Series

Notre Dame Leads Series, 15-0

Date	Site	Result	Score
2/7/96	Notre Dame	W	90-51
2/17/96	Pittsburgh	W	89-51
1/18/97	Notre Dame	W	65-49
12/31/97	Pittsburgh	W	66-46
2/15/98	Notre Dame	W	75-60
1/16/99	Pittsburgh	W	81-72
1/18/00	Pittsburgh	W	67-53
2/9/00	Notre Dame	W	81-74
2/7/01	Notre Dame	W	72-58
2/27/01	Pittsburgh	W	82-63
2/5/02	Pittsburgh	W	68-56
2/26/03	Notre Dame	W	77-69
3/8/03	Piscataway, N.J. ¹	W	73-65
2/21/04	Pittsburgh	W	72-68
2/5/05	Pittsburgh	W	75-47

1 = BIG EAST Championship

Series Scoring	Total	Average
Notre Dame	1,133	75.5
Pittsburgh	882	58.8

Current Win Streak: Notre Dame - 15 games
Muffet McGraw vs. Pittsburgh: 15-0
Agnus Berenato vs. Notre Dame: 0-3
McGraw vs. Berenato: McGraw leads 8-0
ND Biggest Win: 39 (90-51 on 2/7/96)
UP Biggest Win: None
ND Longest Win Streak: 15 (1996-2005)
UP Longest Win Streak: None

THE TALE OF THE TAPE

	ND	UP
Overall/BIG EAST record	16-10/7-8	18-8/9-6
AP/ESPN-USA Today rank*	NR	NR
SCORING		
Points scored per game	64.2	67.2
Points allowed per game	62.8	60.5
Field goal percentage	.420	.400
Three-point percentage	.332	.315
Free throw percentage	.657	.646
REBOUNDING		
Rebounds per game	37.5	41.5
Opponent rebs. per game	38.6	35.3
Rebounding margin	(-1.1)	+6.2
OTHER		
Assists per game	12.7	14.3
Turnovers per game	15.0	13.6
Assist/turnover ratio	0.85	1.05
Blocked shots per game	4.0	3.2
Steals per game	8.4	7.0

* = AP poll of Feb. 27; ESPN/USA Today poll of Feb. 21
 NR = not ranked



while being cheered on by hundreds of fans from her Monessen, Pa., hometown.

With Walker out, the 6-foot-1 LaVere and 6-3 **Teresa Borton** dominated inside against Pittsburgh, which was far less physical without the BIG EAST's third leading rebounder.

LaVere started the run with a steal and finished it with consecutive baskets, then added two free throws after Pittsburgh scored for the first time in five minutes on **Jessica Allen's** three-pointer, her only basket.

Borton had two blocked shots, a steal and a basket, and **Crystal Erwin** added a steal and basket during the run, which repeatedly saw the Panthers settle for three-point attempts when they couldn't get the ball inside. Borton finished with 10 points and four blocked shots, and Erwin had eight points.

Pitt was only 5-of-26 on three-pointers, with **Vika Sholokhova** going 1-of-9. Notre Dame was so successful pounding the ball inside it attempted only six three-pointers, making two.

Jacqueline Batteast added 12 points for Notre Dame, whose seven-game streak includes four victories over ranked opponents — topped by a 65-59 decision at three-time defending national champion Connecticut that ended the Huskies' 112-game Big East home winning streak.

Walker, a muscular former high school shot putter, had little help offensively. **Katie Histed** had eight points and five rebounds, but missed 12 of 15 shots as the Panthers shot 25 percent (17-of-68) to Notre Dame's 43.5 percent (27-of-62).

Going Out On Top

Notre Dame is 23-5 (.821) all-time on Senior Night, including a 16-2 record in the **Muffet McGraw** era (1987-present). In fact, the Irish lost their first Senior Night game under McGraw (69-68 vs. DePaul in 1988), but have proceeded to win on 16 of the past 17 Senior Nights since then. The only setback during this current stretch came in 2002, when Villanova edged the Irish, 48-45 and broke Notre Dame's school-record 51-game home winning streak in the process.

Last season, the Irish sent off **Jacqueline Batteast** and **Teresa Borton** in fine fashion with an 82-57 Senior Day victory over West Virginia on Feb. 26, 2005 at the Joyce Center.

Duffy Named BIG EAST Player Of The Week

For the second time this season and third in her career, senior All-America guard and co-captain **Megan Duffy** was selected as the BIG EAST Conference Player of the Week, the league office announced Monday. Duffy, who also has earned a spot on the BIG EAST Weekly Honor Roll three times this season, is the seventh player in school history to be a three-time BIG EAST Player of the Week in her career (all seven have gone on to receive All-America recognition), and first since **Jacqueline Batteast** took the honor five times from 2003-05.

Last week, Duffy averaged 19.5 points and 4.0 rebounds per game with a .550 field goal percentage (11-of-20) and a .545 three-point percentage (6-of-11) as Notre Dame picked up BIG EAST road victories at West Virginia (70-

LAST IRISH GAME vs. PITTSBURGH

#6/7 Notre Dame 75, Pittsburgh 47

February 5, 2005

Petersen Events Center (Pittsburgh, Pa.)

Notre Dame (75)

Player	min	fg-a	3fg-a	ft-a	reb	ast	pf	tp
Batteast	15	4-10	2-2	2-2	3	1	3	12
Erwin	15	2-8	0-0	4-4	6	0	1	8
Borton	21	5-7	0-0	0-0	7	1	2	10
Duffy	25	1-5	0-4	4-4	2	9	2	6
Gray	18	0-5	0-0	0-0	4	2	1	0
Gaines	23	0-3	0-0	3-4	2	3	3	3
Allen	32	7-11	0-0	2-2	3	3	2	16
Powers	8	0-0	0-0	0-0	1	0	0	0
Tsipis	5	0-1	0-0	0-0	1	0	0	0
D'Amico	12	1-1	0-0	1-2	2	0	2	3
LaVere	26	7-11	0-0	3-6	8	0	0	17
Team					11			
Totals	200	27-62	2-6	19-24	50	19	16	75

Pittsburgh (47)

Player	min	fg-a	3fg-a	ft-a	reb	ast	pf	tp
Brown	31	0-6	0-0	2-2	7	3	5	2
Sholokhova	33	3-16	1-9	0-2	7	0	1	7
Walker	25	5-10	0-0	3-7	11	0	5	13
Kunich	37	3-8	2-6	0-0	2	3	0	8
Allen	15	1-3	1-3	0-0	1	0	0	3
Hughes	3	0-0	0-0	0-0	1	0	1	0
Histed	25	3-15	1-5	1-2	5	1	2	8
Taylor, D.	4	0-1	0-1	0-0	0	0	0	0
Taylor, C.	13	0-2	0-0	2-4	2	0	2	2
Morris	14	2-7	0-2	0-1	2	0	2	4
Team					6			
Totals	200	17-68	5-26	8-18	44	7	18	47

Notre Dame 40 35 -- 75

Pittsburgh 23 24 -- 47

FG Pct: Notre Dame 43.5, Pittsburgh 25.0. **3-PT FG Pct:** Notre Dame 33.3, Pittsburgh 19.2. **FT Pct:** Notre Dame 79.2, Pittsburgh 44.4. **Turnovers:** Notre Dame 15, Pittsburgh 20. **Blocked Shots:** Notre Dame 10 (Borton 4), Pittsburgh 6. **Steals:** Notre Dame 8, Pittsburgh 7 (Sholokhova 3). **Attendance:** 5,652.

58) and Cincinnati (75-66, OT). Against West Virginia, Duffy scored 17 of her game-high 22 points in the second half, making 5-of-7 shots (4-of-6 three-pointers) in the final 20 minutes alone. Three days later at UC, Duffy shared game-high scoring honors with 17 points, including 10 in overtime (highlighted by 8-of-8 free throws) as the Irish downed the Bearcats.

Bonus Basketball

The Irish have played a school-record four overtime games this season, breaking the old mark of three held by the 1995-96 club. Notre Dame also has established a new BIG EAST record for OT games in regular-season conference play, surpassing the three overtime games played by three teams (most recently in 1990-91 by Boston College and St. John's).

Prior to this season, the Irish had played only two BIG EAST regular-season OT games, winning both (88-79 vs. Seton Hall in 1996; 78-74 at Rutgers in 2000).

The Greenhouse Effect

Notre Dame has won its last two games on the road, both while sporting its seldom-used green alternate uniforms. Prior to their Feb. 22 game at West Virginia, the Irish had not worn their green duds since March 27, 2004, when they dropped a 55-49 decision to No. 5/7 Penn State in the NCAA Sweet 16 at Hartford.

Notre Dame is 7-4 (.636) all-time when playing in the greens, including a 4-1 (.800) mark in regular-season play.



When The Game Is On The Line...

The Irish have posted a .684 free throw percentage (80-of-117) in the final two minutes and overtime of games this season, including a 10-of-11 effort in Saturday's overtime win at Cincinnati.

Leading the way are junior forward **Crystal Erwin**, who made her only two late-game free throws of the year with 41 seconds left in regulation Jan. 28 vs. USF, and senior guard **Megan Duffy**, who has made 38 of 40 foul shots (.950) in crunch time.

ND Free Throws In Final 2 Minutes + OT

Erwin	2-2	1.000
Duffy	38-40	.950
Allen	5-8	.625
D'Amico	3-5	.600
Gray	3-5	.600
Gaines	11-19	.579
LaVere	5-9	.556
Smith	2-4	.500
Schrader	11-25	.440
TOTAL	80-117	.684

Spine-Chiller Supremes

Former Oakland Raiders cornerback (and noted quote machine) **Lester Hayes** used to refer to close, exciting games as "spine-chiller supremes." Lester probably would have used the same phrase to describe Notre Dame's season to date.

The Irish have played eight games decided by five points or less, going 5-3 in those contests. Three games have gone into overtime (part of a school-record four OT games this year), and all three losses were in doubt heading into the final minute of regulation (two defeats occurring in OT).

Don't Count Us Out

While Notre Dame has gotten into an unfortunate habit of falling behind by double-digit margins this season, the Irish have also found a way to claw back into the contest with dramatic second-half rallies.

In 13 games this season, Notre Dame has used a significant second-half run to either take control or battle back into contention. Included in that total are four games against Top 25 opponents (USC, Utah, Tennessee and DePaul), with three of those second-half charges leading to Irish wins (all but Tennessee).

What's more, six times the Irish have been tied or trailed at some point in the final 11 minutes, but on the strength of their second-half run, they rallied to take the win.

ND Second-Half Runs

*17-5 vs. Michigan (Nov. 18)
(trailed 32-38 @ 10:54; W, 55-45)
10-2 @ W. Michigan (Nov. 20)
(led 49-48 @ 11:50; W, 71-68)
*27-8 @ Indiana (Nov. 23)
(trailed 47-51 @ 10:42; W, 74-61)
*22-8 vs. #24/21 USC (Nov. 27)
(trailed 51-54 @ 9:22; W, 73-62)
26-9 vs. Iona (Nov. 29)
(led 39-35 @ 18:20; W, 74-55)
*16-3 vs. #22/21 Utah (Dec. 18)
(trailed 38-39 @ 9:54; W, 68-55)
17-4 vs. #1 Tennessee (Dec. 31)
(trailed 25-47 @ 13:09; L, 62-51)
*10-3 vs. Marquette (Jan. 10)
(trailed 47-51 @ 3:26; W, 67-65 ot)
20-1 vs. #10 DePaul (Jan. 17)
(trailed 39-51 @ 13:30; W, 78-75)
17-5 vs. USF (Jan. 28)
(trailed 21-34 @ half; L, 68-64 ot)
*13-2 @ Syracuse (Jan. 31)
(trailed 43-46 @ 13:35; W, 67-55)
30-9 vs. Villanova (Feb. 7)
(trailed 22-43 @ 16:31; L, 69-65 ot)
17-6 @ West Virginia (Feb. 22)
(trailed 40-42 @ 13:22; W, 70-58)

* = ND won after trailing or tied with 11:00 left

A History Lesson

With one steal vs. South Florida on Jan. 28, senior All-America guard **Megan Duffy** became only the fifth player in school history to record 1,000 points and 200 steals in her career. Duffy has 1,228 points and 213 steals since arriving in South Bend in 2002.

Duffy joins

Karen Robinson (1987-91), **Krissi Davis** (1987-91), **Katryna Gaither** (1993-97) and **Niele Ivey** (1996-2001) as the only Irish players in that elite 1,000-point/200-steal club.

What's more, Duffy has 485 career assists, putting her just 15 handouts short of pairing with Robinson and Ivey as the only Notre Dame players ever to amass 1,000 points, 500 assists and 200 steals in their careers.

ND 1,000-Point/200-Steal Club

Karen Robinson (1987-91)
(1,590p ... 228s ... 579a)
Krissi Davis (1987-91)
(1,194p ... 226s ... 195a)
Katryna Gaither (1993-97)
(2,126p ... 207s ... 99a)
Niele Ivey (1996-2001)
(1,430p ... 348s ... 727a)
◆ Megan Duffy (2002-present)
(1,228p ... 213s ... 485a)

Among The Best In The Business

Senior All-America guard **Megan Duffy** has been selected by a panel of national sportswriters as one of 11 nominees for the seventh annual Nancy Lieberman Award, which is presented annually by the Rotary Club of Detroit to the nation's top point guard.

The award is named after Hall of Famer and two-time Wade Trophy winner **Nancy Lieberman**, who guided Old Dominion to the 1978 and 1980 AIAW national titles and now serves as a broadcaster for ESPN. The trophy goes to the player who possesses the floor leadership, play-making and ball-handling skills that personified Lieberman during her career.

Duffy also is one of 30 players who have been designated as mid-season candidates for the Naismith Trophy, it was announced Feb. 17 by the Atlanta Tipoff Club. The award is presented annually to the nation's top women's college basketball player, with the top 30 mid-season candidates chosen from a preseason group of 50 based upon player performance during the season.

More Than A Passing Grade For Duffy

Senior guard **Megan Duffy** was named to the *ESPN The Magazine* Academic All-District V First Team, it was announced Feb. 9. It's the second consecutive year that Duffy has been chosen for academic all-district honors (she was a second-team pick in 2004-05), and with her selection to the first team, Duffy now is eligible for Academic All-America honors, becoming the first Irish women's basketball player to make the national ballot since **Ruth Riley** did so in three consecutive years (1999-2001). In 2000 and 2001, Riley earned first-team Academic All-America citations, in addition to being named the '01 Academic All-America Team Member of the Year.

Duffy currently holds a 3.555 cumulative grade-point average in the College of Arts and Letters, where she is pursuing a double major in psychology and computer applications. She has earned Dean's List honors in each of the

C Melissa D'Amico

Dec. 18	MVP, Duel in the Desert (Gray Division)
Dec. 19	BIG EAST Player of the Week

G Megan Duffy

preseason	State Farm/WBCA Wade Trophy Watch List
preseason	All-American (Wooden Women's Award)
preseason	first-team All-American (WBB News Service)
preseason	third-team All-American (<i>Lindy's Annual</i>)
preseason	"Terrific 10" (<i>Street & Smith's</i>)
preseason	top five point guards in nation (ESPN.com)
preseason	all-BIG EAST Conference
preseason	Senior CLASS Award nominee
Jan. 23	BIG EAST Player of the Week
Feb. 27	BIG EAST Player of the Week
Nov. 28	BIG EAST Weekly Honor Roll
Dec. 5	BIG EAST Weekly Honor Roll
Dec. 19	BIG EAST Weekly Honor Roll
Dec. 18	Duel in the Desert All-Tournament Team
Feb. 9	Academic All-District V First Team
Feb. 10	Nancy Lieberman Award Nominee
Feb. 17	Naismith Trophy Mid-Season Candidate

F Courtney LaVere

Feb. 6	BIG EAST Weekly Honor Roll
--------	----------------------------

G Lindsay Schrader

Nov. 21	BIG EAST Freshman of the Week
Dec. 5	BIG EAST Weekly Honor Roll

Top Joyce Center Crowds

Rk.	Date	Opponent	Result	Atten.
T1.	12/31/05	#1 Tennessee	L, 51-62	11,418*
T1.	2/24/01	Georgetown	W, 65-53	11,418*
T1.	1/15/01	#1 Connecticut	W, 92-76	11,418*
4.	2/10/02	#16 Boston College	W, 60-44	9,676
5.	3/19/01	Michigan (NCAA)	W, 88-54	9,597
6.	1/4/03	#7 Purdue	L, 54-71	9,483
7.	1/26/02	#16 Virginia Tech	W, 64-57	8,878
8.	2/14/04	Providence	W, 81-51	8,760
9.	1/13/04	#4 Connecticut	W, 66-51	8,574
10.	1/29/02	Syracuse	W, 71-46	8,571
11.	3/17/01	Alcorn St. (NCAA)	W, 98-49	8,553
12.	1/20/03	#3 Connecticut	L, 53-72	8,265
13.	2/19/06	#8 Connecticut	L, 64-79	8,193
14.	1/12/92	#2 Tennessee	L, 82-85	8,134
15.	11/18/01	Valparaiso	W, 42-35	7,960
16.	2/26/05	West Virginia	W, 82-57	7,935
17.	1/5/02	Providence	W, 72-66	7,804
18.	2/26/02	Villanova	L, 45-48	7,785
19.	2/19/02	West Virginia	W, 72-63	7,709
20.	1/18/03	Rutgers	L, 61-64	7,697

* = indicates capacity crowd // rankings from AP poll

Boldface indicates game played this season





Graduation Success Rate

Sixteen of 20 athletics programs at the University of Notre Dame compiled graduation rates of 100 percent, and none were below 90 percent, according to a new measurement developed by the NCAA.

The Graduation Success Rate (GSR) was created to more accurately reflect actual graduation rates by including transfer data in the calculation. The methodology used for the past decade by the Department of Education counts all student-athletes who transfer from or leave an institution for any reason as non-graduates from their initial school, even if they leave in good academic standing.

NCAA figures released in December 2005 showed that, among Notre Dame's women's sports, basketball, cross country/track, fencing, golf, lacrosse, softball, swimming, tennis and volleyball achieved 100 percent GSR scores. Soccer scored a 94 percent GSR.

Among the 119 NCAA Division I-A institutions, Notre Dame had the highest percentage of its sports with 100 percent scores, with a .800 figure (16 of 20).

Academic Progress Rate

All 22 athletics programs at the University of Notre Dame exceeded the new academic performance standard introduced in February 2005 by the NCAA, and 13 Irish teams scored a perfect 1,000. The Academic Progress Rate (APR) uses a series of formulas related to student-athlete retention and eligibility to measure the academic performance of all participants who receive a grant-in-aid on every team at every NCAA Division I college and university. It replaces the annual graduation rates report that previously was issued by the NCAA. Beginning in 2005-06, programs that fail to earn an APR score of 925 or better will be barred from replacing a scholarship athlete who leaves the institution while academically ineligible.

Notre Dame registered an overall APR of 979, and among Division I-A schools it had the third highest percentage of teams with perfect scores. The national average for Division I-A institutions was 944.

Notre Dame's overall and individual sport APRs would be substantially higher if the University certified the academic eligibility of student-athletes using the NCAA process rather than its own, more stringent, standard. If Notre Dame certified its student-athletes at mid-year using only the six-hour requirement, the University's overall APR would increase from 979 to better than 990.

Academic All-Americans

Entering the 2005-06 academic year, Notre Dame ranks second in the nation with 158 Academic All-America® selections, including six last year. The Academic All-America® Program is administered by the College Sports Information Directors of America (CoSIDA), whose membership votes on the award winners, and the program is sponsored this year by *ESPN The Magazine*.

The Notre Dame women's basketball program has produced four Academic All-America® honorees in its 29-year history, with those four players winning a total of six citations. In addition, two-time first-team Academic All-America® pick **Ruth Riley** was tapped as the 2001 Academic All-America® Women's Basketball Team Member of the Year, as well as the Academic All-America® Team Member of the Year. Riley also is one of only 10 student-athletes in Notre Dame history to earn All-American and Academic All-America® honors twice in her career.

Current senior guard **Megan Duffy** is poised to become the latest Irish women's basketball player to earn Academic All-America® recognition. Duffy is a two-time Academic All-District V selection (first team in 2005-06) and currently holds a 3.555 grade-point average (GPA) as a double major in psychology and computer applications in Notre Dame's College of Arts and Letters. She also has garnered Dean's List honors the past four semesters (spring 2004, fall 2004, spring 2005, fall 2005), the most recent coming after she finished with a 3.821 GPA for the term.

ND Women's Basketball Academic All-Americans

Maggie Lalay	1980, 1981 (Second Team)
Shari Matvey	1981 (Second Team)
Ruth Riley	2000, 2001* (First Team)
Mary Beth Schueth	1983 (Second Team)

* = also Academic All-America® Women's Basketball Team Member of the Year and Academic All-America® Team Member of the Year



Academics

past four semesters, including a 3.917 GPA in the spring 2005 term and a 3.821 GPA in the recently-completed fall 2005 semester.

Game #26 Recap: Cincinnati

Sophomore guard **Tulyah Gaines** picked the perfect time for the best game of her young college career, posting her first-ever double-double with 14 points and 11 rebounds to help Notre Dame register a critical 75-66 overtime win at Cincinnati on Saturday afternoon before a crowd of 1,072 fans inside Fifth Third Arena. Gaines also was responsible for sending the Irish (16-10, 7-8 BIG EAST) to their school-record fourth overtime game of the season, hitting the game-tying layup as time expired in regulation.

Senior co-captains **Megan Duffy** and **Courtney LaVere** displayed expert leadership against the Bearcats, each scoring a game-high 17 points. Duffy had 10 of her markers in overtime, including 8-of-8 at the foul line, and now has scored in double figures in 11 consecutive games. Meanwhile, LaVere added seven rebounds and a season-high four blocks (one off her career best) while knocking down 8-of-11 shots from the floor.

Freshman guard **Lindsay Schrader** also made big contributions for Notre Dame, scoring five of her 11 points in overtime and coming up with the two biggest assists of the game — to Gaines for the game-tying layup and then to LaVere for an old-fashioned three-point play with 2:07 left in OT that put the Irish ahead for good.

Treasure Humphries and **Karen Twehues** scored 14 points apiece for Cincinnati (17-9, 7-8), while **Michelle Jones** added 11 points and nine rebounds. The Bearcats won the battle on the boards, 41-38, but Notre Dame shot a sharp 49.1 percent from the floor (.571 in the second half and overtime) and was strong from the foul line when it counted, going 16-of-19 (.842) in the second half and OT session.

Saturday's contest was a tight affair throughout, as the teams combined for 13 ties and 15 lead changes. Neither side led by more than six points at any time in regulation, with UC seemingly taking the final lead on Humphries' off-balance jumper with 2.4 seconds remaining. Irish head coach **Muffet McGraw** then called her own timeout and diagrammed a game-tying play — LaVere whipped a three-quarter court baseball pass to Schrader, whose touch pass to Gaines was perfect, and the speedy guard drove all the way in for the equalizer as the horn sounded.

The teams traded the lead five times and were tied once during the first half of the overtime period, with Humphries squaring the score at 62-all on the second of two free throws with 2:18 left. On Notre Dame's next possession, Schrader found LaVere knifing down the lane and the veteran forward converted a layup in traffic and was fouled by Jones. LaVere drained the ensuing free throw, igniting an 11-2 Irish run that featured a foul line jumper by Schrader, followed by eight consecutive free throws from Duffy in the final 42 seconds to secure the win.

Noting The Cincinnati Win

- Notre Dame played its school-record fourth overtime game of the season, breaking the old mark of three set by the 1995-96 Irish squad.
- All four of Notre Dame's OT games have come against BIG EAST Conference opponents (Marquette, South Florida, Villanova and Cincinnati), setting a new league record for regular-season overtime contests in BIG EAST play (previous: three on three occasions, most recently by Boston College and St. John's in 1990-91).
- Notre Dame had at least three double-digit scorers for the eighth consecutive game and 20th time in 26 outings this season.
- Notre Dame's 28-24 halftime lead was its first at the break since Feb. 4 vs. Providence.
- Notre Dame topped the 70-point mark for the second game in a row, the first time it has done that since a five-game stretch from Nov. 20-Dec. 4.
- Sophomore guard **Tulyah Gaines** set new career highs with 14 points (previous: 12, twice, last vs. Seton Hall on Jan. 7), 11 rebounds (previous: nine vs. West Virginia on Feb. 26, 2005) and eight free throws made (tied previous mark set against Seton Hall on Jan. 7).
- Gaines is the fourth different Irish player to notch a double-double this year, joining freshman guard **Lindsay Schrader** (two), sophomore center **Melissa D'Amico** (one) and junior forward **Crystal Erwin** (one); Gaines' double-double was the first by a Notre Dame player since Erwin's double-dip on Jan. 4 at St. John's.
- Senior All-America guard **Megan Duffy's** current 11-game double-figure scoring streak not only remains a career best, but also is the longest in a single season since **Jacqueline Bateast** had a 12-game run early in her freshman campaign of 2001-02.
- Duffy's 17 points boosted her into 14th place on the Notre Dame career scoring list with 1,228 points, passing **Letitia Bowen** (1,219 from 1991-95).
- Senior forward **Courtney LaVere** also moved up a spot on the Irish all-time points list, now with 1,109 points to surpass **Danielle Green** (1,106 from 1995-2000) for 18th in Notre Dame history.
- LaVere's four blocks were the most by an Irish player in a game since **Teresa Borton** had five vs. West Virginia on Feb. 26, 2005; LaVere also rose to sixth place on the school's career blocks list with 134 swats, passing **Shari Matvey** who had 133 from 1979-83.

Duffy, LaVere Join ND 1,000-Point Club

Senior co-captains **Megan Duffy** and **Courtney LaVere** became the 21st and 22nd members of Notre Dame's 1,000-Point Club earlier this season. Duffy did so at St. John's on Jan. 4, with LaVere following suit 10 days (and three games) later on Jan. 14 at Louisville.

Duffy currently has 1,228 career points, good for 14th on the Irish career scoring chart. LaVere is 18th all-time with 1,109 points.



The Duffy-LaVere 1,000-point tandem marks just the fifth time in school history have teammates reached the 1,000-point plateau in the same season, with Niele Ivey and Kelley Siemon the last to do so in 2000-01.

Duffy and LaVere also have recorded the shortest span between hitting the mark (three games). The previous school record was eight games, the term between Mary Beth Schueth and Carrie Bates scoring their 1,000th points in the 1984-85 season.

Peaking When It Counts

When the regular season enters its stretch run in the month of February, Notre Dame historically seems to raise its level of play. Since joining the BIG EAST Conference in 1995-96, the Irish are 64-17 (.790) in February games, including a 36-3 (.923) mark at home. Two of those February home losses for the Irish in the past 11 seasons came against Villanova (48-45 on Feb. 26, 2002; 69-65 in overtime on Feb. 7, 2006), with the other coming at the hands of Connecticut earlier this month on Feb. 19 (79-64).

In the 19-year Muffet McGraw era (1987-present), the Irish are 112-32 (.778) in the month of February, including a 58-9 (.866) home record. In that time, Notre Dame has not had a losing February, and only once did the Irish end the month at .500 (4-4 in 1988-89, McGraw's second season in South Bend).

Give Her Five (Hundred)

With Notre Dame's 55-45 victory over Michigan on Nov. 18, head coach Muffet McGraw became the 27th women's basketball coach in NCAA Division I history to reach the 500-win mark. McGraw now has a career record of 515-206 (.714) in 24 years of coaching, including 19 seasons at Notre Dame (427-165, .721).

Here's a closer look at how that milestone victory breaks down for McGraw:

- She is the 10th NCAA Division I women's basketball coach to register her 500th victory before turning 50 (her birthday was Dec. 5).
- McGraw is the fourth active coach in the BIG EAST Conference to reach the career

ND Career Scoring List

12. Margaret Nowlin (1988-92)	1,312
13. Mary Beth Schueth (1981-85)	1,233
14. ♦Megan Duffy (2002-p)	1,228
15. Letitia Bowen (1991-95)	1,219
16. Heidi Bunek (1985-89)	1,202
17. Krissi Davis (1987-91)	1,194
18. ♦Courtney LaVere (2002-p)	1,109

ND 1,000-Point Teammates

05-06 ♦Megan Duffy/Courtney LaVere (3 gms between 1,000 pts.)
00-01 Niele Ivey/Kelley Siemon (35 gms)
99-00 Ruth Riley/Danielle Green (14 gms)
94-95 Letitia Bowen/Beth Morgan (16 gms)
84-85 Trena Keys/Mary Beth Schueth (13 gms)
Schueth/Carrie Bates (8 gms)

500-win mark, joining Rutgers' C. Vivian Stringer, Connecticut's Geno Auriemma and Villanova's Harry Perretta.

- She is the third BIG EAST coach in as many seasons to celebrate her 500th win. Auriemma hit the milestone late in the 2002-03 campaign, while Perretta joined the club with his landmark victory midway through last season.

Half And Half

During the past six seasons, Notre Dame has been nearly unbeatable when it has the lead at halftime. The Irish are 109-10 (.916) since the start of the 2000-01 campaign when they go into the dressing room with the lead, including wins in 37 of their last 41 such contests. Notre Dame has won 12 games this season when it led at the break (the Irish were tied at halftime of their win over No. 24/21 USC).

The Best Offense Is A Good Defense...

During the past 11 seasons, Notre Dame has discovered that a solid defensive effort can almost certainly guarantee a victory. In fact, since the beginning of the 1995-96 season (Notre Dame's first in the BIG EAST Conference), the Irish have an amazing 159-9 (.946) record when they hold their opponents to less than 60 points in a game. Notre Dame is 9-0 in such games this season.

...But Sometimes You Have To Score If You Want To Win

Not resting solely on its defensive laurels, Notre Dame also seemingly has found the magic mark when it comes to outscoring its opponents. During the past decade (1995-96 to present), the Irish are 91-3 (.968) when they score at least 80 points in a game. The only blemishes on that record are a pair of overtime losses to Texas A&M (88-84) and Michigan State (87-83) in 1995 and a 106-81 loss to Connecticut in 1998.

Sweet Success

Notre Dame is one of nine schools in the country to have appeared in the NCAA Sweet 16 six times in the past nine seasons (1997-2005). The others are Connecticut and Tennessee (nine times), Duke (eight times), Louisiana Tech (seven times), and Georgia, LSU, North Carolina and Texas Tech (six times).

The Gold Standard

The Irish are one of six teams nationwide to have an active streak of 12 consecutive 20-win seasons. The others in this club are Tennessee (29), Texas Tech (16), Louisiana Tech (14), Old Dominion (14) and Connecticut (12).

Now That's A Home Court Advantage

One of the hallmarks of Notre Dame's success has been its stellar play at home. In fact, the Irish have been virtually untouchable at home in recent years, winning 134 of their last 150 games (.893) at the 11,418-seat Joyce Center, including winning streaks of 51 and 25 games in that span. Notre Dame also has a 79-12

Fall Signings

Notre Dame head women's basketball coach Muffet McGraw announced Nov. 9 that four of the nation's top high school student-athletes have chosen to continue their academic and athletic careers with the Irish, signing national letters of intent to attend Notre Dame beginning in the fall of 2006. Ashley Barlow, a 5-9 guard from Indianapolis, Ind. (Pike High School), Danielle Ben-Tsvulun, a 6-3 forward from Fort Wayne, Ind. (Harding High School), Melissa Lechlitter, a 5-7 guard from Mishawaka, Ind. (South Bend St. Joseph's High School) and Erica Williamson, a 6-4 center from Charlotte, N.C. (South Mecklenburg High School) all made their official commitments to the Irish during the early signing period, which last from Nov. 9-16. Collectively, this quartet is ranked as the nation's No. 15 recruiting class, according to *All-Star Girls Report*, marking the 10th consecutive year Notre Dame has had a top-20 recruiting class.

"We're very excited about the potential of this group," McGraw said. "It's an exceptionally-balanced class and addresses many of our needs for the future. Each of these individuals will be tremendous complements to the players already in our program. Without question, this new class is a highly-skilled group, but each player also brings with her several intangibles, including excellent leadership, a strong work ethic and a desire to get better every day. They all have experienced success at the high school and AAU level and we think they will be outstanding fits at Notre Dame."

The three Indiana players are the most Notre Dame has ever had in a single incoming class. Some of the other notable Indiana natives to play for the Irish include All-Americans Beth Morgan (Bloomington; 1993-97), Ruth Riley (Macy; 1997-01) and Jacqueline Batteast (South Bend; 2001-05), as well as the school's leader in career three-pointers, Sheila McMillen (Rochester; 1995-99). Ironically, three of those players (Riley, Batteast and McMillen) and two of the newest Irish signees (Barlow and Lechlitter) grew up along the U.S. Route 31 corridor from South Bend to Indianapolis.

A capsule look at the four newest additions to the Irish women's basketball team follows, with complete bios available on-line at the following web address:

<http://und.collegesports.com/sports/w-baskbl/spec-rel/110905aad.html>

ASHLEY BARLOW, 5-9, G (Indianapolis/Pike)

16.9 ppg., 3.9 rpg., 3.2 apg. in her three-year prep career ... 23.7 ppg., 5.3 rpg., 3.9 spg. last season, ranking as top scorer (all classes) in metro Indianapolis ... ranked 24th in nation by Full Court Press ... ranked 55th in nation (10th among shooting guards) by All-Star Girls Report (ASGR) ... Street & Smith's preseason honorable mention All-American (2006) ... all-state selection (2005) ... candidate for 2006 Indiana Miss Basketball honors ... WBCA HS All-American Team (2006).

DANIELLE BEN-TSVULUN (BEN-SVOO-lun) 6-3, F (Fort Wayne/Harding)

12.1 ppg., 9.3 rpg., 3.2 bpg. last season, leading the Summit Athletic Conference in rebounding and blocked shots ... all-state selection (2005) ... two-time all-city and all-conference choice (2005, 2006).

MELISSA LECHLITNER (LEK-light-ner), 5-7, G (Mishawaka, Ind./South Bend St. Joseph's)

14.8 ppg., 4.1 rpg., 5.8 apg., 3.3 spg. with a .359 three-point percentage in her three-year prep career ... 16.3 ppg., 6.3 apg., 3.3 spg. with a .437 three-point percentage last season, leading South Bend St. Joseph's to a 25-1 record and Class 3A state title (first girls' basketball state championship in South Bend history) ... team ranked 23rd in nation in 2005-06 USA Today Super 25 preseason poll ... ranked 27th in nation (eighth among point guards) by All-Star Girls Report (ASGR) ... Street & Smith's preseason honorable mention All-American (2006) ... adidas Top Ten Camp All-Star (Upperclass - 2005; Underclass - 2004) ... three-time all-state selection (2003, 2004, 2005) ... preseason candidate for 2006 Indiana Miss Basketball honors.

ERICA WILLIAMSON, 6-4, C (Charlotte/So. Mecklenburg)

10.0 ppg., 12.5 rpg., 5.3 bpg. last season at Honeoye Falls-Lima High School in Rochester, N.Y. ...helped lead team to a 24-2 record, Class A state championship and runner-up finish in New York Federation Tournament of Champions (all classes) ... transferred to South Mecklenburg High School in Charlotte prior to her senior season (father took new job) — team ranked 12th in national preseason poll by Street & Smith's and ninth in South Region in USA Today Super 25 preseason poll ... ranked 89th in nation by All-Star Girls Report (ASGR) ... all-state selection (2005) ... all-area pick (2005).



**Day of the Week**

Sunday	3-2
Monday	0-0
Tuesday	4-2
Wednesday	3-2
Thursday	0-0
Friday	2-0
Saturday	4-4

Time of Game

Day games (before 6 p.m. local time)	9-5
Night games (6 p.m. or later local time)	7-5

Location

Home games	7-5
Road games	7-5
Neutral site games	2-0

Halftime score

Leading at the half	12-2
Tied at the half	1-0
Trailing at the half	3-8

Rebounding margin

Grab more rebounds than opponents	10-2
Grab same number of rebounds as opponents	0-0
Grab fewer rebounds than opponents	6-8

Field goal shooting

Higher pct. than opponent	13-2
Lower pct. than opponent	3-8
Shoot 45% or better	9-1
Shoot less than 45%	7-9
Hold opponent under 40%	9-3

Free throw margin

Make more free throws	10-2
Make same number of free throws	1-1
Make fewer free throws	5-7

Turnovers

Commit fewer turnovers	11-7
Commit same number of turnovers	0-1
Commit more turnovers	5-2

Miscellaneous

Vs. Top 25 (AP or ESPN/USA Today polls)	3-5
On television	4-5
In white jerseys	9-5
In blue jerseys	5-5
In green jerseys	2-0
In overtime games	2-2

Margin of Victory

1-5 points	5-3
6-10 points	3-1
11-15 points	5-4
16-20 points	2-0
21+ points	1-2

Conference Affiliation

BIG EAST	7-8
Big Ten	3-1
Metro Atlantic Athletic	1-0
Mid-American	1-0
Mid-Continent	1-0
Mountain West	1-0
Pac-10	1-0
Southeastern	0-1
Sun Belt	1-0

Month

November	6-0
December	3-2
January	4-5
February	3-3
March	0-0

(.868) record in BIG EAST Conference play at the Joyce Center, sporting a 31-game league winning streak at home before it ended with a 48-45 loss to Villanova in the '02 home finale.

The Irish have been particularly strong when it comes to non-conference games at home, winning 57 of their last 61 non-BIG EAST contests (.934) at the Joyce Center, dating back to the 1994-95 season. The only three losses in that span all came at the hands of Big Ten Conference opponents — Wisconsin in 1996 (81-69), Purdue in 2003 (71-54) and Michigan State in 2004 (82-73 OT). The Purdue loss snapped a 33-game non-conference home winning streak which began after the UW setback.

Since its inaugural season in 1977-78, Notre Dame has played all of its games at the Joyce Center, posting a 284-77 (.787) record at the venerable facility. In three of the previous six seasons (1999-2000, 2000-01 and 2003-04), the Irish were a perfect 15-0 at home, setting a school record for home wins in a season.

Jammin' The Joyce

Beginning with its national championship season of 2000-01, Notre Dame has ranked among the top 20 in the nation in attendance each of the past five years, including a No. 16 rating in 2004-05 (5,830 fans per game). Notre Dame has averaged 6,682 fans in its 12 home games this season, and is 11th in the latest unofficial national attendance rankings, released each Monday by the University of Wisconsin Sports Information Office.

What's more, each of the top 20 women's basketball crowds in Joyce Center history have occurred during the 19-year tenure of head coach **Muffet McGraw** (1987-present), with 19 of those 20 occurring in the past six seasons (2000-01 to present). Lastly, the Irish have attracted at least 5,000 fans to 77 of their last 79 home games, including 14 contests with at least 8,000 fans and the first three sellouts in the program's history.

The most recent sellout in Notre Dame women's basketball history took place on Dec 31, when 11,418 fans packed the Joyce Center for the Irish matchup with No. 1 Tennessee. The game sold out 19 days in advance, the fastest sellout in the 29-year history of the program.

Oh Captain, My Captain

Notre Dame's two seniors — guard **Megan Duffy** and forward **Courtney LaVere** — are serving as team captains for the 2005-06 season. Duffy is in her second year as a captain (making her the 16th two-time captain in school history, and 12th in the **Muffet McGraw** era), while LaVere is a first-time captain. Both players received the captain's honor following a vote of their teammates prior to the season.

Notre Dame On The Small Screen

Notre Dame had nine of its regular-season games televised during the 2005-06 season. Highlighting this year's television docket were six nationally-televised Irish women's basketball contests, including three consecutive games on the ESPN family of networks (which

has shown 27 Notre Dame games in the past six seasons).

This year's TV slate continues a recent trend that has seen the Irish become a regular fixture on television. Beginning with the NCAA championship season of 2000-01 (and including games to date this year), Notre Dame has played in 69 televised games, including 43 that were broadcast nationally. Last year, the Irish had 17 games televised, with 10 being national broadcasts.

Riley Named One Of ESPN.com's Top 25 Players Of The Past 25 Years

Former Notre Dame All-America center and 2001 consensus National Player of the Year **Ruth Riley** has been selected as one of the top 25 women's college basketball players of the past 25 years, according to *ESPN.com*. The list of all-time greats was released Jan. 10 in conjunction with the silver anniversary celebration of the inaugural NCAA women's basketball season in 1981-82.

A native of Macy, Ind., Riley was tapped as one of the legends of the sport in part because of her contributions in the NCAA Tournament, where she led Notre Dame to three NCAA Sweet 16 appearances and the 2001 national championship. In the '01 NCAA title game vs. Purdue, Riley tallied 28 points (on 9-of-13 shooting), 13 rebounds and seven blocks, not to mention the two game-winning free throws with 5.8 seconds remaining which snapped a 66-66 tie. It was an effort that *ESPN.com* termed as "the third-best all-time championship game performance in NCAA history." That outing capped a six-game NCAA tourney stretch in which the 6-foot-5 post averaged 23.2 points and 9.0 rebounds per game while shooting at a .632 clip (48-of-76).

Riley was a two-time first-team Associated Press All-America selection and two-time CoSIDA Academic All-America choice, earning Academic All-America Team Member of the Year honors in 2001. In addition, she was a three-time first team all-BIG EAST selection, earning the league's Player of the Year award in 2001 and the conference Defensive Player of the Year hardware three consecutive years. The only player in school history to amass 2,000 points and 1,000 rebounds in her career (2,072 points/1,007 rebounds), Riley also is the Irish all-time leader in seven statistical categories, including blocked shots (370 - fifth in NCAA history) and field goal percentage (.632 - 11th in NCAA history).

Next Game: BIG EAST Championship

Notre Dame tips off postseason play Saturday with a first-round game in the 2006 BIG EAST Conference Championship, presented by Aeropostale, at the Hartford Civic Center in Hartford, Conn.

Due to a variety of possible seeding scenarios, Notre Dame's first-round opponent and time of that game will not be known until after all games have been played Tuesday night. The Irish do know they will be no lower than the No. 11 seed, meaning they will not play in the first game of the tournament (noon ET on Saturday).





Notre Dame on the BIG EAST Conference and NCAA statistical leaderboards

Individual Statistics

Category	BIG EAST - All Games		NCAA Division I		BIG EAST - BIG EAST Games Only	
	Rank	Leader	Rank	Leader	Rank	Leader
Scoring (Top 20 BIG EAST / Top 50 NCAA)						
Megan Duffy	15.7	8 22.4, Jessica Dickson, USF	—	22.7, Jessica Dickson, USF	15.7, 7	21.7, Jessica Dickson, USF
Assists (Top 15 BIG EAST / Top 30 NCAA)						
Megan Duffy	4.19	8 6.72, Carolyn Kieger, MU	—	8.3, Lyndsey Medders, Iowa State	4.00, t-8	6.43, Carolyn Kieger, MU
Steals (Top 15 BIG EAST / Top 30 NCAA)						
Megan Duffy	2.00	7 2.58, Wright, SJU/Ajavon, RU	—	4.8, Sherrill Baker, Georgia	1.67, t-10	2.80, Kia Wright, SJU
Free Throw Percentage (Top 15 BIG EAST / Top 30 NCAA)						
Megan Duffy	.894 (118-132)	1 .894, Megan Duffy, ND	11	.960, Adrienne Squire, PSU	.881 (74-84), 3	.900, Kia Wright, SJU
Three-Point Field Goal Percentage (Top 15 BIG EAST / Top 30 NCAA)						
Megan Duffy	.342 (51-149)	— .454, Mel Thomas, UCONN	—	.500, Julie Larsen, Utah	.386 (32-83), 3	.493, Karen Twehues, UC
Three-Point Field Goals Made (Top 15 BIG EAST / Top 30 NCAA)						
Megan Duffy	1.96	6 2.50, Liad Suez-Karni, VU	—	3.6, Keturah Newkirk, Beth.-Cook.	2.13, t-6	2.53, Liad Suez-Karni, VU
Blocked Shots (Top 15 BIG EAST / Top 30 NCAA)						
Courtney LaVere	1.46	t-5 2.31, Vaida Sipaviciute, SU	—	5.2, Brooke McAfee, IUPUI	1.80, t-2	1.93, Kia Vaughn, RU
Melissa D'Amico	1.23	8	—		1.00, t-10	
Assist/Turnover Ratio (Top 15 BIG EAST)						
Megan Duffy	1.73	10 2.35, Micah Harvey, UC		not kept	1.54, 13	2.59, Kristin Heidloff, GU
Minutes Played (Top 15 BIG EAST)						
Megan Duffy	38.50	1 38.50, Megan Duffy, ND		not kept	39.27, t-1	39.27, Duffy, ND/Dickson, USF

Conference stats through Feb. 26 // NCAA stats through Feb. 20

324 Division I teams

bold = BIG EAST leader OR NCAA Top 15

Team Statistics

Category	BIG EAST - All Games		NCAA Division I		BIG EAST - BIG EAST Games Only	
	Rank	Leader	Rank	Leader	Rank	Leader
Scoring Offense	64.2	11 77.0, DePaul	174	89.7, Duke	62.5, 11	74.9, Connecticut
Scoring Defense	62.8	11 51.7, Rutgers	135	51.3, Ohio State	65.6, 10	50.3, Rutgers
Scoring Margin	+1.4	12 +19.5, Connecticut	156	+31.6, Duke	(-3.1), 12	+18.8, Connecticut
FT Percentage	.657 (355-540)	13 .724, St. John's	242	.789, Northern Iowa	.650 (195-300), 13	.761, Connecticut
FG Percentage	.420 (614-1462)	10 .477, Connecticut	121	.520, Duke	.410 (344-840), 9	.482, Connecticut
FG Pct. Defense	.382 (586-1534)	3 .350, Connecticut	81	.337, South Carolina	.398 (355-893), 3	.351, Rutgers
3-Point FG Pct.	.332 (87-262)	8 .399, Rutgers	—	.431, Dartmouth	.357 (55-154), 5	.427, Rutgers
3-Point FG Pct. Def.	.370 (161-435)	16 .261, Marquette		not kept	.407 (99-243), 16	.270, Connecticut
3-Point FG Made	3.35	14 7.73, Villanova	291	8.8, Santa Clara	3.67, 12	7.87, Villanova
Rebounding	37.5	9 42.6, DePaul		not kept	36.0, 9	41.5, Pittsburgh
Opponent Rebounding	38.6	15 31.7, West Virginia		not kept	39.9, t-14	32.9, Rutgers
Rebounding Margin	(-1.1)	13 +7.7, DePaul	196	+13.4, Maryland	(-3.9), 14	+6.0, Pittsburgh
Offensive Rebounds	12.19	11 17.58, Pittsburgh		not kept	11.33, t-12	18.73, Pittsburgh
Defensive Rebounds	25.31	7 26.65, Syracuse		not kept	24.67, 7	26.27, Connecticut
Blocked Shots	4.04	5 4.59, Connecticut	63	7.7, Auburn	4.33, 1	4.33, Notre Dame
Assists	12.69	14 18.89, DePaul	227	21.9, Duke	12.40, 13	18.27, DePaul
Steals	8.42	6 10.14, Connecticut	174	13.8, Wofford	8.40, 3	8.80, Connecticut
Turnover Margin	+1.81	6 +5.29, South Florida		not kept	+1.33, 5	+5.33, South Florida
Turnover Average	14.96		39	10.3, Villanova		not kept
Assist/Turnover Ratio	0.85	9 1.56, Villanova		not kept	0.86, 10	1.63, Villanova
Personal Fouls	15.96		64	11.4, Iowa State		not kept

Conference stats through Feb. 26 // NCAA stats through Feb. 20

324 Division I teams

bold = BIG EAST leader OR NCAA Top 15

**2005-06 University of Notre Dame Women's Basketball Results****Overall Record: 16-10 (Home: 7-5, Away: 7-5, Neutral: 2-0); BIG EAST Conference Record: 7-8**

----- Notre Dame Highs -----											
Date	ND NR	Opp NR	Opponent	Time/Result	Streak	Record	BEC	Scorer	Rebounder	Assists	Attendance
Nov. 18	15/16		MICHIGAN	W 55-45	W1	1-0		Allen-16	Schrader-14	Duffy-8	6,134
Nov. 20	15/16		at Western Michigan ^{CL}	W 71-63	W2	2-0		Duffy-19	Duffy-7	two with 2	2,116
Nov. 23	13/15		at Indiana	W 74-61	W3	3-0		Duffy-26	LaVere-8	Duffy-5	976
Nov. 27	13/15	24/21	USC ^{CL}	W 73-62	W4	4-0		Duffy-19	D'Amico-10	Duffy-6	5,895
Nov. 29	11/12		IONA	W 74-55	W5	5-0		Duffy-21	D'Amico-8	three with 3	5,204
Dec. 4	11/12		at Wisconsin	W 77-72	W6	6-0		Duffy-20	D'Amico-8	Duffy-5	5,455
Dec. 7	10/10	24/23	at Purdue	L 54-65	L1	6-1		Duffy-12	Erwin-11	Schrader-3	7,213
Dec. 17	13/14		vs. Arkansas State ¹	W 77-54	W1	7-1		D'Amico-20	Schrader-8	Duffy-6	1,297
Dec. 18	13/14	22/21	vs. Utah ¹	W 68-55	W2	8-1		D'Amico-13	Schrader-10	Duffy-8	1,195
Dec. 28	12/11		VALPARAISO	W 58-50	W3	9-1		Schrader-13	two with 7	LaVere-6	6,430
Dec. 31	12/11	1/1	TENNESSEE ^{CSTV}	L 51-62	L1	9-2		Duffy-19	Erwin-7	Allen-3	11,418 (c)
Jan. 4	12/12		• at St. John's	L 63-66	L2	9-3	0-1	D'Amico-14	Erwin-12	five with 2	722
Jan. 7	12/12		• SETON HALL	L 61-74	L3	9-4	0-2	Gaines-12	Erwin-6	Gaines-5	6,854
Jan. 10	20/19		• MARQUETTE	W 67-65 (ot)	W1	10-4	1-2	Duffy-32	Schrader-10	Schrader-4	5,281
Jan. 14	20/19		• at Louisville	L 51-61	L1	10-5	1-3	Allen-10	D'Amico-6	Duffy-4	3,493
Jan. 17	24/22	10/10	• DePAUL ^{CSTV}	W 78-75	W1	11-5	2-3	Duffy-23	Schrader-9	Duffy-9	5,311
Jan. 21	24/22		• at Georgetown	W 54-52	W2	12-5	3-3	Duffy-16	D'Amico-10	Duffy-5	1,103
Jan. 24	21/21	10/9	• at Rutgers ^{CSTV}	L 43-69	L1	12-6	3-4	Duffy-10	Smith-10	Duffy-3	3,302
Jan. 28	21/21		• SOUTH FLORIDA	L 64-68 (ot)	L2	12-7	3-5	Duffy-25	Allen-8	Duffy-4	6,309
Jan. 31			• at Syracuse	W 67-55	W1	13-7	4-5	Schrader-24	two with 8	Gaines-4	895
Feb. 4			• PROVIDENCE	W 66-48	W2	14-7	5-5	LaVere-18	three with 8	Duffy-6	6,800
Feb. 7			• VILLANOVA ^{ESPNU}	L 65-69 (ot)	L1	14-8	5-6	Schrader-16	three with 6	Duffy-5	6,347
Feb. 12	17/15		• at DePaul ^{ESPN2}	L 50-79	L2	14-9	5-7	Allen-15	Schrader-7	Duffy-4	3,953 (c)
Feb. 19	8/6		• CONNECTICUT ^{ESPN2}	L 64-79	L3	14-10	5-8	three with 12	Erwin-7	Duffy-6	8,193
Feb. 22			• at West Virginia	W 70-58	W1	15-10	6-8	Duffy-22	two with 5	LaVere-3	1,203
Feb. 25			• at Cincinnati ^{BETV}	W 75-66 (ot)	W2	16-10	7-8	two with 17	Gaines-11	two with 4	1,072
Feb. 28			• PITTSBURGH	7 p.m. ET							

BIG EAST Championship – Hartford, Conn. (Hartford Civic Center)

March 4	First Round	TBD
March 5	Quarterfinals ^{CSTV}	TBD
March 6	Semifinals ^{ESPNU}	6/8 p.m. ET
March 7	Championship ^{ESPN2}	7:30 p.m. ET

NCAA Tournament – First & Second Rounds (Sites: Chicago, Denver, Nashville, Norfolk, Trenton, Tucson, University Park, West Lafayette)

March 18-19	First Round ^{ESPN/ESPN2}	TBD
March 20-21	Second Round ^{ESPN/ESPN2}	TBD

NCAA Tournament – Regionals (Sites: Albuquerque, Bridgeport, Cleveland, San Antonio)

March 25-26	Regional Semifinals ^{ESPN/ESPN2}	TBD
March 27-28	Regional Finals ^{ESPN/ESPN2}	TBD

NCAA Women's Final Four – Boston, Mass. (TD Banknorth Garden)

April 2	National Semifinals ^{ESPN}	7/9:30 p.m. ET
April 4	National Championship ^{ESPN}	8:30 p.m. ET

• = indicates BIG EAST Conference game

NR = national ranking (listed as Associated Press/ESPN-USA Today)

(c) = capacity crowd

1 = Duel in the Desert (Cox Pavilion – Las Vegas, Nev.)

ESPNU/ESPN2/ESPNU = Game to be televised live on ESPN, ESPN2 or ESPNU

CSTV = Game to be televised live on College Sports Television (CSTV)

CL = Game televised live on Comcast Local

BETV = Game televised live as part of BIG EAST regional package (check local listings)

All home games are listed in ALL CAPS and played at Joyce Center (capacity 11,418)

All times shown are local to the site // Dates and times are subject to change

2005-06 ATTENDANCE

	Totals	Avg.	High
All Games:	114,171	4,392	11,418 (UT - 12/31)
Home:	80,176	6,682	11,418 (UT - 12/31)
Away:	31,503	2,626	7,213 (PUR - 12/7)
Neutral:	2,492	1,246	1,297 (ASU - 12/17)





2005-06 Notre Dame Women's Basketball Statistics — All Games

Overall Record: 16-10 (Home: 7-5, Away: 7-5, Neutral: 2-0)

Player	GP-GS	Min.-Avg.	FG-A	Pct.	3FG-A	Pct.	FT-A	Pct.	OR	DR	Tot.	Avg.	PF-DQ	A	T	B	S	Pts.	Avg.
Duffy, Megan	26-26	1001-38.5	119-300	.397	51-149	.342	118-132	.894	12	88	100	3.8	44-0	109	63	2	52	407	15.7
Schrader, Lindsay	26-23	721-27.7	99-233	.425	3-6	.500	43-89	.483	29	113	142	5.5	46-1	47	52	7	28	244	9.4
LaVere, Courtney	26-10	615-23.7	99-192	.516	2-6	.333	24-44	.545	50	60	110	4.2	66-1	34	27	38	20	224	8.6
Allen, Charel	26-1	636-24.5	89-237	.376	12-46	.261	28-47	.596	35	78	113	4.3	35-0	37	37	12	33	218	8.4
D'Amico, Melissa	26-17	518-19.9	70-145	.483	0-0	.000	30-57	.526	37	71	108	4.2	55-0	12	44	32	12	170	6.5
Gray, Breona	26-18	602-23.2	46-118	.390	19-53	.358	18-23	.783	20	40	60	2.3	33-0	30	36	3	23	129	5.0
Erwin, Crystal	26-19	535-20.6	46-116	.397	0-1	.000	37-60	.617	48	88	136	5.2	69-2	26	54	7	20	129	5.0
Gaines, Tulyah	25-16	519-20.8	33-88	.375	0-0	.000	49-75	.653	26	50	76	3.0	51-0	34	59	2	24	115	4.6
Smith, Chandrica	19-0	137-7.2	13-32	.406	0-0	.000	8-13	.615	13	21	34	1.8	15-0	1	11	2	7	34	1.8
Tsipis, Amanda	6-0	13-2.2	0-1	.000	0-1	.000	0-0	.000	0	0	0	0.0	1-0	0	0	0	0	0	0.0
• Bolden, Brittney	1-0	2-2.0	0-0	.000	0-0	.000	0-0	.000	0	0	0	0.0	0-0	0	0	0	0	0	0.0
• Trezza, Christine	1-0	1-1.0	0-0	.000	0-0	.000	0-0	.000	0	0	0	0.0	0-0	0	0	0	0	0	0.0
Team									47	49	96	3.7					6		
Notre Dame	26	5300	614-1462	.420	87-262	.332	355-540	.657	317	658	975	37.5	415-4	330	389	105	219	1670	64.2
Opponents	26	5300	586-1534	.382	161-435	.370	300-429	.699	367	637	1004	38.6	488-10	358	436	86	193	1633	62.8

Deadball Rebounds: Notre Dame 80, Opponents 51 // • = no longer on team

Score by Periods	1st	2nd	OT	Total
Notre Dame	760	871	39	— 1670
Opponents	755	842	36	— 1633

2005-06 Notre Dame Women's Basketball Statistics — BIG EAST Games

Overall Record: 7-8 (Home: 3-4, Away: 4-4)

Player	GP-GS	Min.-Avg.	FG-A	Pct.	3FG-A	Pct.	FT-A	Pct.	OR	DR	Tot.	Avg.	PF-DQ	A	T	B	S	Pts.	Avg.
Duffy, Megan	15-15	589-39.3	65-159	.409	32-83	.386	74-84	.881	6	54	60	4.0	28-0	60	39	0	25	236	15.7
Schrader, Lindsay	15-12	407-27.1	55-138	.399	2-5	.400	30-55	.545	16	58	74	4.9	24-0	25	27	5	15	142	9.5
Allen, Charel	15-1	388-25.9	59-161	.366	8-32	.250	10-20	.500	22	39	61	4.1	20-0	18	18	10	22	136	9.1
LaVere, Courtney	15-10	363-24.2	57-105	.543	0-3	.000	15-32	.469	26	38	64	4.3	38-0	14	13	27	10	129	8.6
Erwin, Crystal	15-8	303-20.2	28-69	.406	0-0	.000	17-29	.586	27	49	76	5.1	38-1	15	32	4	13	73	4.9
Gaines, Tulyah	15-13	349-23.3	21-56	.375	0-0	.000	29-44	.659	17	33	50	3.3	34-0	27	39	1	15	71	4.7
Gray, Breona	15-10	343-22.9	25-62	.403	13-31	.419	6-10	.600	11	21	32	2.1	20-0	17	17	1	14	69	4.6
D'Amico, Melissa	15-6	260-17.3	27-68	.397	0-0	.000	7-17	.412	12	32	44	2.9	24-0	10	24	15	6	61	4.1
Smith, Chandrica	13-0	94-7.2	7-22	.318	0-0	.000	7-9	.778	10	15	25	1.9	10-0	0	5	2	6	21	1.6
Tsipis, Amanda	3-0	4-1.3	0-0	.000	0-0	.000	0-0	.000	0	0	0	0.0	1-0	0	0	0	0	0	0.0
Team									23	31	54	3.6					2		
Notre Dame	15	3100	344-840	.410	55-154	.357	195-300	.650	170	370	540	36.0	237-1	186	216	65	126	938	62.5
Opponents	15	3100	355-893	.398	99-243	.407	175-250	.700	208	390	598	39.9	274-7	222	236	56	105	984	65.6

Deadball Rebounds: Notre Dame 42, Opponents 34

Score by Periods	1st	2nd	OT	Total
Notre Dame	412	487	39	— 938
Opponents	437	511	36	— 984

**2005-06 Notre Dame Women's Basketball Statistics — Home Games****Overall Record: 7-5**

Player	GP-GS	Min.-Avg.	FG-A	Pct.	3FG-A	Pct.	FT-A	Pct.	OR	DR	Tot.	Avg.	PF-DQ	A	T	B	S	Pts.	Avg.
Duffy, Megan	12-12	467-38.9	57-151	.377	26-77	.338	55-64	.859	5	44	49	4.1	16-0	55	24	2	26	195	16.3
Allen, Charel	12-1	318-26.5	49-127	.386	6-24	.250	19-28	.679	20	39	59	4.9	18-0	22	14	6	16	123	10.3
LaVere, Courtney	12-4	292-24.3	50-86	.581	2-5	.400	17-30	.567	20	27	47	3.9	33-1	21	15	15	8	119	9.9
Schrader, Lindsay	12-10	341-28.4	42-94	.447	0-0	.000	26-52	.500	15	53	68	5.7	24-1	22	27	3	14	110	9.2
D'Amico, Melissa	12-8	238-19.8	29-70	.414	0-0	.000	14-30	.467	18	29	47	3.9	24-0	6	21	11	3	72	6.0
Gaines, Tulyah	11-8	229-20.8	13-37	.351	0-0	.000	24-36	.667	11	25	36	3.3	17-0	13	25	2	13	50	4.5
Gray, Breona	12-8	289-24.1	17-51	.333	8-22	.364	8-10	.800	9	21	30	2.5	12-0	13	16	1	14	50	4.2
Erwin, Crystal	12-9	240-20.0	15-51	.294	0-0	.000	14-29	.483	26	41	67	5.6	31-1	11	31	2	10	44	3.7
Smith, Chandrica	8-0	51-6.4	5-10	.500	0-0	.000	3-4	.750	4	9	13	1.6	6-0	0	6	0	3	13	1.6
Tsipis, Amanda	3-0	7-2.3	0-1	.000	0-1	.000	0-0	.000	0	0	0	0.0	1-0	0	0	0	0	0	0.0
• Bolden, Brittney	1-0	2-2.0	0-0	.000	0-0	.000	0-0	.000	0	0	0	0.0	0-0	0	0	0	0	0	0.0
• Trezza, Christine	1-0	1-1.0	0-0	.000	0-0	.000	0-0	.000	0	0	0	0.0	0-0	0	0	0	0	0	0.0
Team										27	27	54	4.5				1		
Notre Dame	12	2475	277-678	.409	42-129	.326	180-283	.636	155	315	470	39.2	182-3	163	180	42	107	776	64.7
Opponents	12	2475	265-708	.374	89-218	.408	133-187	.711	160	304	464	38.7	234-5	171	208	32	93	752	62.7

Deadball Rebounds: Notre Dame 45, Opponents 22 // • = no longer on team

Score by Periods	1st	2nd	OT	Total
Notre Dame	346	409	21	— 776
Opponents	351	374	27	— 752

2005-06 Notre Dame Women's Basketball Statistics — Away Games**Overall Record: 9-5 (Away: 7-5, Neutral: 2-0)**

Player	GP-GS	Min.-Avg.	FG-A	Pct.	3FG-A	Pct.	FT-A	Pct.	OR	DR	Tot.	Avg.	PF-DQ	A	T	B	S	Pts.	Avg.
Duffy, Megan	14-14	534-38.1	62-149	.416	25-72	.347	63-68	.926	7	44	51	3.6	28-0	54	39	0	26	212	15.1
Schrader, Lindsay	14-13	380-27.1	57-139	.410	3-6	.500	17-37	.459	14	60	74	5.3	22-0	25	25	4	14	134	9.6
LaVere, Courtney	14-6	323-23.1	49-106	.462	0-1	.000	7-14	.500	30	33	63	4.5	33-0	13	12	23	12	105	7.5
D'Amico, Melissa	14-9	280-20.0	41-75	.547	0-0	.000	16-27	.593	19	42	61	4.4	31-0	6	23	21	9	98	7.0
Allen, Charel	14-0	318-22.7	40-110	.364	6-22	.273	9-19	.474	15	39	54	3.9	17-0	15	23	6	17	95	6.8
Erwin, Crystal	14-10	295-21.1	31-65	.477	0-1	.000	23-31	.742	22	47	69	4.9	38-1	15	23	5	10	85	6.1
Gray, Breona	14-10	313-22.4	29-67	.433	11-31	.355	10-13	.769	11	19	30	2.1	21-0	17	20	2	9	79	5.6
Gaines, Tulyah	14-8	290-20.7	20-51	.392	0-0	.000	25-39	.641	15	25	40	2.9	34-0	21	34	0	11	65	4.6
Smith, Chandrica	11-0	86-7.8	8-22	.364	0-0	.000	5-9	.556	9	12	21	1.9	9-0	1	5	2	4	21	1.9
Tsipis, Amanda	3-0	6-2.0	0-0	.000	0-0	.000	0-0	.000	0	0	0	0.0	0-0	0	0	0	0	0	0.0
Team										20	22	42	3.0				5		
Notre Dame	14	2825	337-784	.430	45-133	.338	175-257	.681	162	343	505	36.1	233-1	167	209	63	112	894	63.9
Opponents	14	2825	321-826	.389	72-217	.332	167-242	.690	207	333	540	38.6	254-5	187	228	54	100	881	62.9

Deadball Rebounds: Notre Dame 35, Opponents 29

Score by Periods	1st	2nd	OT	Total
Notre Dame	414	462	18	— 894
Opponents	404	468	9	— 881





2005-06 Single Game Highs & Lows

Team Superlatives

NOTRE DAME HIGH	NOTRE DAME LOW	CATEGORY	OPPONENT HIGH	OPPONENT LOW
78 vs. DePaul (1/17/06)	43 at Rutgers (1/24/06)	Points/Game	79, twice (MR: by Connecticut, 2/19/06)	45 by Michigan (11/18/05)
46 (2nd) at West Virginia (2/22/06)	14 (1st) vs. Tennessee (12/31/05)	Points/Half	50 (2nd) by DePaul (2/12/06)	18, twice (MR: 1st by Georgetown, 1/21/06)
18 at Cincinnati (2/25/06)	5 vs. Villanova (2/7/06)	Points/OT	10 by South Florida (1/28/06)	8 by Marquette (1/10/06)
32 vs. Arkansas State (12/17/05)	14 at Rutgers (1/24/06)	Field Goals Made	29 by DePaul (2/12/06)	14 by Arkansas State (12/17/05)
73 vs. Arkansas State (12/17/05)	44 at Rutgers (1/24/06)	Field Goal Attempts	73 by Cincinnati (2/25/06)	50 by Valparaiso (12/28/05)
.560 at St. John's (1/4/06)	.250 at DePaul (2/12/06)	FG Percentage	.509 by DePaul (2/12/06)	.255 by Arkansas State (12/17/05)
7 at West Virginia (2/22/06)	0, twice (MR: at Syracuse, 1/31/06)	3-Point FG Made	13** by DePaul (1/17/06)	1 by Indiana (11/23/05)
17, twice (MR: at DePaul, 2/12/06)	4, three times (MR: at Cincinnati, 2/25/06)	3-Point FG Attempts	29 by DePaul (1/17/06)	6 by Syracuse (1/31/06)
.571 vs. Connecticut (2/19/06)	.000, twice (MR: at Syracuse, 1/31/06)	3-Point FG Percentage	.667 by Rutgers (1/24/06)	.143 by Indiana (11/23/05)
23 vs. Utah (12/18/05)	4 at St. John's (1/4/06)	Free Throws Made	23 by Seton Hall (1/7/06)	3 by Michigan (11/18/05)
37 vs. Utah (12/18/05)	7, twice (MR: at Louisville, 1/14/06)	Free Throw Attempts	29 by Seton Hall (1/7/06)	6 by Michigan (11/18/05)
.857 at Louisville (1/14/06)	.500 at St. John's (1/4/06)	FT Percentage	.813 by Marquette (1/10/06)	.500 by Michigan (11/18/05)
54 vs. Michigan (11/18/05)	27 at Indiana (11/23/05)	Rebounds	55 by Louisville (1/14/06)	21 by St. John's (1/4/06)
22 vs. Providence (2/4/06)	6, twice (MR: at DePaul, 2/12/06)	Assists	22 by DePaul (2/12/06)	8 by Utah (12/18/05)
14 at Syracuse (1/31/06)	4 vs. Valparaiso (12/28/05)	Steals	12, twice (MR: by Valparaiso, 12/28/05)	2 by Seton Hall (1/7/06)
7, twice (MR: at Georgetown, 1/21/06)	0 vs. DePaul (1/17/06)	Blocked Shots	9 by Georgetown (1/21/06)	0, twice (MR: by DePaul, 1/17/06)
24 at St. John's (1/4/06)	6* at DePaul (2/12/06)	Turnovers	22 by Louisville (1/14/06)	9 by DePaul (2/12/06)
24 vs. Seton Hall (1/7/06)	8 vs. Valparaiso (12/28/05)	Fouls	29 by Utah (12/18/05)	9 by Valparaiso (12/28/05)

* = Notre Dame record // ** = tied Notre Dame opponent and Joyce Center records

Individual Superlatives

	NOTRE DAME	OPPONENT
Points Scored	32 by Megan Duffy vs. Marquette (1/10/06)	29 by Casey Rost of Western Michigan (11/20/05)
Field Goals Made	10 by Melissa D'Amico vs. Arkansas State (12/17/05)	11 by Matee Ajavon of Rutgers (1/24/06)
Field Goal Attempts	20 by Megan Duffy vs. Iona (11/29/05)	19 by Casey Rost of Western Michigan (11/20/05)
Highest FG Percentage (min. 5 made)	1.000 (6-6) by Lindsay Schrader at Wisconsin (12/4/05)	.833 (5-6), twice (MR: by Amber Harris of Seton Hall, 1/7/06)
3-Point Field Goals Made	5 by Megan Duffy at West Virginia (2/22/06)	7* by Casey Rost of Western Michigan (11/20/05)
3-Point Field Goal Attempts	11 by Megan Duffy vs. Iona (11/29/05)	10 by Casey Rost of Western Michigan (11/20/05)
3-Point FG Percentage (min. 2 made)	1.000 (2-2) by Breona Gray vs. Connecticut (2/19/06)	1.000 (2-2), three times (MR: by Holly Medley of DePaul, 2/12/06)
Free Throws Made	12 by Megan Duffy vs. Marquette (1/10/06)	7, four times (MR: by Cappie Pondexter of Rutgers, 1/24/06)
Free Throw Attempts	13, twice (MR: by Megan Duffy vs. South Florida, 1/28/06)	10, three times (MR: by Charde Houston of Connecticut, 2/19/06)
Free Throw Percentage (min. 3 made)	1.000 (9-9) by Megan Duffy vs. DePaul (1/17/06)	1.000 (6-6) by Shantel Brown of Seton Hall (1/7/06)
Rebounds	14 by Lindsay Schrader vs. Michigan (11/18/05)	19 by Khara Smith of DePaul (2/12/06)
Assists	9 by Megan Duffy vs. DePaul (1/17/06)	10, twice (MR: by Liad Suez-Karni of Villanova, 2/7/06)
Steals	6 by Megan Duffy vs. USC (11/27/05)	7 by Angel McCoughtry of Louisville (1/14/06)
Blocked Shots	4 by Courtney LaVere at Cincinnati (2/25/06)	6 by Katrina Wheeler of Georgetown (1/21/06)
Turnovers	8, twice (MR: by Tulyah Gaines at Rutgers, 1/24/06)	8 by Martina Weber of Iona (11/29/05)
Minutes Played	45, twice (MR: by Megan Duffy vs. Villanova, 2/7/06)	45 by Jessica Dickson of South Florida (1/28/06)

* = tied Notre Dame opponent record

**2005-06 Notre Dame Game-By-Game Team Statistics**

Opponent (Attendance)	Overall		3-Point		FT-A	Pct.	Rebs.		PF-DQ	A	TO	B	S	Pts
	FG-A	Pct.	FG-A	Pct.			Off-Def-Tot							
NOTRE DAME (6,134)	18-59	.305	0-4	.000	19-29	.655	22-32-54	16-0	11	19	2	12		55
vs. Michigan	18-56	.321	6-16	.375	3-6	.500	9-24-33	23-0	14	21	4	8		45
NOTRE DAME	27-65	.415	1-6	.167	16-20	.800	14-25-39	16-0	7	12	5	6		71
at Western Michigan (2,116)	25-60	.417	8-19	.421	10-13	.769	11-26-37	18-0	15	18	2	5		68
NOTRE DAME	28-51	.549	6-13	.462	12-18	.667	5-22-27	18-0	15	13	7	8		74
at Indiana (976)	22-55	.400	1-7	.143	16-23	.696	17-23-40	19-0	10	19	1	4		61
NOTRE DAME (5,895)	26-54	.481	4-11	.364	17-28	.607	11-32-43	12-0	15	20	3	11		73
vs. USC	23-72	.319	6-24	.250	10-15	.667	21-23-44	21-0	12	17	5	12		62
NOTRE DAME (5,204)	29-66	.439	3-14	.214	13-21	.619	15-27-42	15-1	14	13	2	12		74
vs. Iona	23-57	.404	5-15	.333	4-7	.571	8-27-35	21-0	13	21	1	7		55
NOTRE DAME	27-49	.551	3-9	.333	20-25	.800	12-22-34	17-0	13	20	6	7		77
at Wisconsin (5,455)	28-64	.438	7-17	.412	9-13	.692	16-11-27	21-2	14	15	2	11		72
Notre Dame	21-58	.362	1-7	.143	11-18	.611	12-22-34	18-0	11	15	1	9		54
at PURDUE (7,213)	23-57	.404	4-16	.250	15-20	.750	17-30-47	17-0	14	18	8	9		65
NOTRE DAME (1,297)	32-73	.438	4-10	.400	9-12	.750	15-32-47	21-1	19	11	3	10		77
vs. Arkansas State ¹	14-55	.255	6-24	.250	20-27	.741	13-28-41	15-0	11	21	2	7		54
NOTRE DAME (1,195)	21-46	.457	3-9	.333	23-37	.622	14-29-43	17-0	13	14	3	5		68
vs. Utah ¹	18-57	.316	5-18	.278	14-19	.737	14-16-30	29-1	8	15	1	4		55
NOTRE DAME (6,430)	26-52	.500	1-8	.125	5-7	.714	13-24-37	8-0	17	19	3	4		58
vs. Valparaiso	18-50	.360	7-19	.368	7-10	.700	9-13-22	9-0	12	17	0	12		50
Notre Dame (11,418)	15-49	.306	6-17	.353	15-25	.600	14-21-35	20-1	9	17	5	9		51
vs. TENNESSEE	19-58	.328	7-17	.412	17-26	.654	24-26-50	21-0	13	18	4	9		62
• Notre Dame	28-50	.560	3-7	.429	4-8	.500	11-30-41	14-0	11	24	5	6		63
at ST. JOHN'S (722)	26-61	.426	9-19	.474	5-8	.625	6-15-21	15-0	19	11	2	10		66
• Notre Dame (6,854)	19-53	.358	3-11	.273	20-34	.588	9-21-30	24-0	13	9	5	9		61
vs. SETON HALL	22-54	.407	7-13	.538	23-29	.793	15-33-48	22-0	15	16	3	2		74
• NOTRE DAME (5,281)	20-60	.333	5-13	.385	22-33	.667	19-24-43	16-1	12	11	4	8		67
vs. Marquette	22-55	.400	8-17	.471	13-16	.813	12-28-40	25-1	19	18	2	4		65
• Notre Dame	20-63	.317	5-15	.333	6-7	.857	11-18-29	16-0	8	13	4	10		51
at LOUISVILLE (3,493)	21-57	.368	6-20	.300	13-19	.684	22-33-55	12-0	12	22	5	9		61
• NOTRE DAME (5,311)	28-60	.467	5-10	.500	17-24	.708	12-25-37	12-0	16	17	0	11		78
vs. DePaul	28-64	.438	13-29	.448	6-8	.750	11-24-35	22-1	18	19	0	6		75
• NOTRE DAME	22-53	.415	2-7	.286	8-12	.667	9-26-35	15-0	14	20	7	10		54
at Georgetown (1,103)	20-58	.345	3-15	.200	9-13	.692	14-25-39	14-0	11	19	9	9		52
• Notre Dame	14-44	.318	4-10	.400	11-18	.611	12-26-38	16-0	6	22	5	5		43
at RUTGERS (3,302)	26-59	.441	6-9	.667	11-16	.688	11-23-34	17-0	15	10	5	10		69
• Notre Dame (6,309)	21-56	.375	3-11	.273	19-28	.679	10-32-42	16-0	10	14	6	9		64
vs. SOUTH FLORIDA	23-68	.338	8-18	.444	14-19	.737	17-31-48	23-2	12	16	3	10		68
• NOTRE DAME	26-58	.448	0-4	.000	15-26	.577	12-23-35	14-0	13	10	4	14		67
at Syracuse (895)	22-56	.393	3-6	.500	8-13	.615	14-26-40	23-1	12	21	3	4		55
• NOTRE DAME (6,800)	27-60	.450	4-10	.400	8-13	.615	12-32-44	13-0	22	15	4	10		66
vs. Providence	17-60	.283	5-16	.313	9-12	.750	12-24-36	13-1	9	18	4	8		48
• Notre Dame (6,347)	25-57	.439	4-13	.308	11-18	.611	8-24-32	12-0	11	10	3	7		65
vs. VILLANOVA	26-57	.456	7-15	.467	10-16	.625	10-27-37	18-0	18	11	3	7		69
• Notre Dame	17-68	.250	4-17	.235	12-16	.750	18-19-37	20-0	6	6	4	5		50
at DePAUL (3,953)	29-57	.509	6-14	.429	15-24	.625	14-37-51	17-0	22	9	6	3		79
• Notre Dame (8,193)	23-52	.442	4-7	.571	14-23	.609	10-21-31	18-0	13	16	5	5		64
vs. CONNECTICUT	26-57	.456	10-19	.526	17-23	.739	12-24-36	16-0	16	16	3	8		79
• NOTRE DAME	27-51	.529	7-15	.467	9-14	.643	7-21-28	14-0	14	15	4	12		70
at West Virginia (1,203)	23-57	.404	3-13	.231	9-16	.563	18-19-37	13-0	12	19	6	8		58
• NOTRE DAME	27-55	.491	2-4	.500	19-26	.731	10-28-38	17-0	17	14	5	5		75
at Cincinnati (1,072)	24-73	.329	5-20	.250	13-18	.722	20-21-41	24-1	12	11	2	7		66

Winners listed in ALL CAPS // Attendance listed next to home team (where applicable)

• = BIG EAST Conference game

¹ = Duel in the Desert (Las Vegas, Nev.)



2005-06 Notre Dame Points-Rebounds-Assists

Opponent	Gaines	Allen	Tsipis	Duffy	Bolden*	Smith	Trezza*	Schrader	Gray	D'Amico	Erwin	LaVere
MICHIGAN	6-4-0	16-5-0	DNP	3-4-8	DNP	DNP	DNP	10-14-2	6-2-1	10-7-0	0-3-0	4-7-0
@ Western Michigan	6-5-1	4-5-1	DNP	19-7-2	DNP	DNP	DNP	11-5-0	6-1-0	8-4-1	7-5-2	10-5-0
@ Indiana	0-1-0	11-4-4	DNP	26-1-5	DNP	0-0-0	DNP	7-4-3	14-2-1	1-1-0	9-4-1	6-8-1
USC	DNP	13-4-2	DNP	19-2-6	DNP	DNP	DNP	8-4-2	2-8-1	13-10-0	2-7-1	16-0-3
IONA	5-4-0	6-5-3	0-0-0	21-2-3	0-0-0	3-2-0	0-0-0	14-3-2	0-3-1	10-8-0	5-3-2	10-5-3
@ Wisconsin	11-1-1	5-2-1	DNP	20-6-5	DNP	DNP	DNP	13-5-0	7-3-0	11-8-1	4-3-2	6-4-3
@ Purdue	3-3-1	7-2-0	DNP	12-7-2	DNP	2-0-0	DNP	6-2-3	0-0-2	7-3-0	7-11-1	10-3-2
vs. Arkansas State ¹	5-1-3	4-5-1	0-0-0	13-5-6	DNP	4-4-1	DNP	6-8-4	12-4-3	20-6-0	4-5-1	9-4-0
vs. Utah ¹	2-2-0	4-9-1	DNP	12-2-8	DNP	DNP	DNP	10-10-3	11-2-1	13-7-0	12-7-0	4-4-0
VALPARAISO	2-4-1	8-7-3	0-0-0	7-1-2	DNP	4-3-0	DNP	13-7-2	2-1-3	10-4-0	2-5-0	10-3-6
TENNESSEE	4-1-0	4-4-3	DNP	19-3-2	DNP	0-0-0	DNP	4-6-1	0-2-0	6-6-0	4-7-1	10-3-2
• at St. John's	2-0-2	6-5-2	DNP	13-5-2	DNP	4-1-0	DNP	8-3-2	3-2-1	14-6-0	11-12-2	2-3-0
• SETON HALL	12-4-5	10-3-1	DNP	8-3-3	DNP	0-1-0	DNP	7-2-1	3-0-1	2-3-2	11-6-0	8-3-0
• MARQUETTE	4-2-1	15-3-2	DNP	32-5-1	DNP	DNP	DNP	3-10-4	2-3-0	0-3-2	2-8-0	9-7-2
• at Louisville	0-2-3	10-4-0	DNP	8-1-4		2-4-0		9-5-0	5-2-0	8-6-0	7-2-1	2-2-0
• DePAUL	8-0-0	5-3-0	DNP	23-8-9		0-0-0		9-9-1	10-3-2	4-1-1	10-6-1	9-3-2
• at Georgetown	2-2-0	8-1-0	DNP	16-5-5		0-0-0		6-5-2	2-1-4	5-10-1	6-2-0	9-4-2
• at Rutgers	5-2-0	0-1-0	0-0-0	10-2-3		9-10-0		8-5-2	8-3-0	0-0-0	1-4-1	2-4-0
• SOUTH FLORIDA	0-0-2	10-8-0	DNP	25-4-4		6-3-0		12-4-0	0-2-1	2-0-0	3-7-2	6-7-1
• at Syracuse	3-3-4	4-5-2	DNP	12-0-3		0-0-0		24-8-0	2-1-1	5-2-1	3-8-2	14-4-0
• PROVIDENCE	6-8-3	10-8-4	0-0-0	12-8-6		0-3-0		2-1-4	10-3-0	8-2-0	0-6-3	18-3-2
• VILLANOVA	3-6-1	14-4-1	DNP	15-6-5		DNP		16-6-2	3-1-1	2-1-0	0-2-1	12-5-0
• at DePaul	6-4-0	15-6-0	DNP	12-2-4		0-2-0		6-7-2	1-6-0	0-2-0	0-0-0	10-6-0
• CONNECTICUT	0-3-0	12-5-3	DNP	11-3-6		0-1-0		12-2-1	12-2-2	5-2-1	5-7-0	7-1-0
• at West Virginia	6-3-2	12-2-1	DNP	22-4-2		0-0-0		9-5-0	5-1-2	2-2-2	10-3-2	4-5-3
• at Cincinnati	14-11-4	5-3-2	0-0-0	17-4-3		0-0-0		11-2-4	3-2-2	4-4-0	4-3-0	17-7-2

Home games in ALL CAPS

DNP = did not play

* = no longer on team

• = BIG EAST Conference game

¹ = Duel in the Desert (Las Vegas, Nev.)

**2005-06 Miscellaneous Statistics**

	ALL GAMES	vs. BIG EAST OPPONENTS
Most First Half Points Scored	45 vs. Arkansas State (12/17)	39 vs. Providence (2/4)
Most First Half Points Allowed	39, twice (MR: by Purdue, 12/7)	37 by Connecticut (2/19)
Most Second Half Points Scored	46 at West Virginia (2/22)	46 at West Virginia (2/22)
Most Second Half Points Allowed	50 by DePaul (2/12)	50 by DePaul (2/12)
Fewest First Half Points Scored	14 vs. Tennessee (12/31)	15 at Louisville (1/14)
Fewest First Half Points Allowed	18, twice (MR: by Georgetown, 1/21)	18 by Georgetown (1/21)
Fewest Second Half Points Scored	22 at Georgetown (1/21)	22 at Georgetown (1/21)
Fewest Second Half Points Allowed	20 by Providence (2/4)	20 by Providence (2/4)

Largest Leads

Notre Dame: 25, three times — 54-29 (15:30, 2nd) and 71-46 (4:11, 2nd) vs. Arkansas State (ND 77-54), 12/17; 62-37 (7:57, 2nd) vs. Providence (ND 66-48), 2/4
Opponent: 32 — 69-37 (1:49, 2nd) by Rutgers (RU 69-43), 1/24

Biggest Deficit Overcome in a Win: 12 — 51-39 (13:30, 2nd) vs. DePaul (ND 78-75), 1/17

Biggest Halftime Deficit Overcome in a Win: 7 — 32-25 vs. Marquette (ND 67-65, ot), 1/10

Biggest Lead Surrendered in a Loss: 7, twice — 37-30 (0:32, 1st) at St. John's (SJU 66-63), 1/4; 25-18 (6:09, 1st) vs. Seton Hall (SHU 74-61), 1/7

Biggest Halftime Lead Surrendered in a Loss: 5, twice — 37-32 at St. John's (SJU 66-63), 1/4; 32-27 vs. Seton Hall (SHU 74-61), 1/7

Halftime Leads: ND: 14 (ND Record — 12-2; 4-2 vs. BIG EAST) // Opponents: 11 (ND Record — 3-8; 3-6 vs. BIG EAST) // Ties: 1 (ND Record — 1-0; 0-0 vs. BIG EAST)

Rebound Advantage: ND: 12 (ND Record — 10-2; 2-2 vs. BIG EAST) // Opponents: 14 (ND Record — 6-8; 4-6 vs. BIG EAST)

Bench Scoring Advantage: ND: 15 (ND Record — 10-5; 5-4 vs. BIG EAST) // Opponents: 10 (ND Record — 5-5; 2-4 vs. BIG EAST) // Ties: 1 (ND Record — 1-0; 0-0 vs. BIG EAST)

Notre Dame Margin: +93 points, +3.6 ppg. (ND — 546 pts., 21.0 ppg.; Opponents — 453 pts., 17.4 ppg.)

Point Differential	2	3	4	5	8	9	10	11	12	13	15	18	19	23	26	29
Notre Dame Wins	2	2	0	1	1	1	1	1	2	2	0	1	1	1	0	0
Notre Dame Losses	0	1	2	0	0	0	1	2	1	1	1	0	0	0	1	1

Starting Lineups (F-C-G-G-G) & W-L Marks

	ALL GAMES	vs. BIG EAST OPPONENTS
Erwin, D'Amico, Duffy, Gray, Schrader	6-3	0-1
Erwin, D'Amico, Duffy, Gaines, Schrader	5-1	2-1
LaVere, Gaines (G), Duffy, Gray, Schrader	3-3	3-3
Erwin, LaVere, Duffy, Gaines, Gray	0-2	0-2
Erwin, D'Amico, Duffy, Gaines, Allen	1-0	1-0
LaVere, D'Amico, Duffy, Gray, Schrader	1-0	1-0
Erwin, LaVere (F), Duffy, Gaines, Schrader	0-1	0-1

Complete Games Played: 12 // Opponents: 7

Most Minutes (Overtime): 45, twice (Megan Duffy vs. South Florida, 1/28; Duffy vs. Villanova, 2/7)

Most Minutes (Regulation): 40, 10 times (Megan Duffy at Indiana, 11/23; Duffy vs. USC, 11/27; Duffy at Purdue, 12/7; Duffy vs. Utah, 12/18; Duffy vs. Tennessee, 12/31; Duffy at St. John's 1/4; Duffy at Georgetown, 1/21; Duffy at Syracuse, 1/31; Duffy at DePaul, 2/12; Duffy vs. Connecticut, 2/19)

Scoring

Double-Figure Games: 78 (Duffy 22, Allen 12, LaVere 11, Schrader 11, D'Amico 8, Gray 6, Erwin 5, Gaines 3) // Opponents: 75

20-29-Point Games: 8 (Duffy 6, D'Amico 1, Schrader 1) // Opponents: 8

30-39-Point Games: 1 (Duffy 1) // Opponents: 0

Game-High Honors*: 15 (Duffy 9, LaVere 2, Schrader 2, Allen 1, D'Amico 1)

Team-High Honors*: 29 (Duffy 14, Allen 4, Schrader 4, D'Amico 3, LaVere 2, Gaines 1, Gray 1)

Rebounding

Double-Figure Games: 9 (Schrader 3, D'Amico 2, Erwin 2, Gaines 1, Smith 1) // Opponents: 15

Game-High Honors*: 10 (Schrader 4, Erwin 2, Allen 1, D'Amico 1, Gaines 1, Smith 1)

Team-High Honors*: 31 (Schrader 10, Erwin 6, D'Amico 5, Allen 3, Duffy 3, Gaines 3, LaVere 2, Smith 1)

Assists

Double-Figure Games: 0 // Opponents: 2

Game-High Honors*: 12 (Duffy 11, LaVere 1)

Team-High Honors*: 33 (Duffy 18, Gaines 4, Schrader 4, Allen 3, Erwin 2, LaVere 2)

Double-Doubles

Points/Rebounds: 5 (Schrader 2 - UM, UTAH; D'Amico 1 - USC; Erwin 1 - SJU; Gaines 1 - CIN) // Opponents: 14*

* = totals may not add up to games played due to ties // ^ = includes one triple-double





The Last Time It Happened...

Notre Dame recorded a

30-point win was on 2/25/04 — ND 93, Miami 58 (35 points)*

40-point win was on 11/26/02 — ND 107, Cleveland State 65 (42 points)*

50-point win was on 3/4/01 — ND 89, Georgetown 33 (56 points) (*BIG EAST Championship Quarterfinal at Storrs, Conn.*)

30-point loss was on 3/17/02 — Tennessee 89, ND 50 (39 points) (*NCAA Midwest Region Second Round at Knoxville, Tenn.*)

Notre Dame shot

60% on FGs was on 12/11/04 — 60.4% (29-48) vs. Washington (ND 72-58)*

65% on FGs was on 2/12/97 — 68.0% (34-50) vs. Boston College (ND 91-64)*

90% on FTs was on 11/30/04 — 100.0% (18-18) at Valparaiso (ND 69-59) (**school record**)

Notre Dame

won 10 games in a row was from 1/16/05 thru 2/15/05 — 10 straight

won 15 games in a row was from 11/17/00 thru 2/14/01 — 23 straight

won 20 games in a row was from 11/17/00 thru 2/14/01 — 23 straight

lost 5 games in a row was from 3/21/91 thru 11/24/91 — 5 straight (across two seasons)

- lost 5 games in a row (one season) was from 2/16/82 thru 3/6/82 — 5 straight

scored 100 points was on 11/26/02 (ND 107, Cleveland State 65)*

- scored 100 points on the road never

- scored 100 points at a neutral site was on 11/24/89 vs. Liberty (ND 113-35) (*Rotary Classic at Orlando, Fla.*)

- scored 100 points & lost never

allowed 100 points was on 12/8/98 (Connecticut 106, ND 81)*

scored less than 50 points was on 1/24/06 (Rutgers 69, ND 43)

allowed less than 50 points was on 2/4/06 (ND 66, Providence 48)*

played an overtime game was on 2/25/06 (ND 75, Cincinnati 66 - ot)

- played a multiple-overtime game was on 11/30/97 (ND 93, UCLA 91 - 2ot)

rallied from a double-digit deficit to win was on 1/17/06 — 12 points (39-51, 13:30, 2nd) vs. DePaul (ND 78-75)*

won on a "last second" shot was on 1/10/06 (ND 67, Marquette 65 - ot — Megan Duffy layup at 0:00 in overtime)*

lost on a "last second" shot was on 1/12/02 (Villanova 60, ND 59 — Mimi Riley jumper at 0:00.4)

had five double-figure scorers was on 12/18/05 (ND 68, Utah 55) — Melissa D'Amico 13, Megan Duffy 12, Crystal Erwin 12, Breona Gray 11, Lindsay Schrader 10 (*Duel in the Desert at Las Vegas, Nev.*)

had six double-figure scorers was on 11/12/04 (ND 92, Illinois State 73) — Courtney LaVere 18, Megan Duffy 15, Charel Allen 14, Jacqueline Batteast 13, Teresa Borton 11, Crystal Erwin 10* (*Preseason WNIT First Round at Notre Dame, Ind.*)

had seven double-figure scorers was on 2/6/97 (ND 90, Syracuse 73) — Rosanne Bohman 16, Mollie Peirick 15, Katryna Gaither 14, Kari Hutchinson 11, Sheila McMillen 11, Beth Morgan 11, Jeannine Augustin 10

had no double-figure scorers was on 2/8/04 (Seton Hall 51, ND 45)

had two double-figure rebounders was on 1/26/05 (ND 72, St. John's 65) — Jacqueline Batteast 10, Crystal Erwin 10*

had two players with "double-doubles" was on 1/26/05 (ND 72, St. John's 65) — Crystal Erwin (14 pts., 10 reb.), Megan Duffy (14 pts., 10 asst.) & Jacqueline Batteast (10 pts., 10 reb.)*

had three players with "double-doubles" was on 1/26/05 (ND 72, St. John's 65) — Crystal Erwin (14 pts., 10 reb.), Megan Duffy (14 pts., 10 asst.) & Jacqueline Batteast (10 pts., 10 reb.)*

had two 20-point scorers was on 3/21/05 (Arizona State 70, ND 61) — Megan Duffy 24, Jacqueline Batteast 20 (*NCAA Tempe Region Second Round at Fresno, Calif.*)

had three 20-point scorers was on 1/7/99 (ND 111, West Virginia 90) — Danielle Green 28, Sheila McMillen 26, Ruth Riley 23*

made 10 three-point field goals was on 3/3/02 (Syracuse 84, ND 79) — 10-26 (38.5%) on threes (*BIG EAST Championship Quarterfinal at Piscataway, N.J.*)

committed 10 turnovers or less was on 2/12/06 (DePaul 79, ND 50) — 6 turnovers (**school record**)

committed 25 turnovers or more was on 1/28/04 (ND 59, Miami 50) — 26 turnovers

forced 25 turnovers or more was on 12/9/04 (ND 65, Dayton 39) — 26 turnovers

An Irish player had

25 points was on 1/28/06 — Megan Duffy (25) vs. South Florida (USF 68-64 - ot)*

30 points was on 1/10/06 — Megan Duffy (32) vs. Marquette (ND 67-65 - ot)*

35 points was on 2/22/00 — Ruth Riley (36) vs. Miami (ND 83-68)*

40 points was on 1/30/99 — Ruth Riley (41) at Providence (ND 97-59) (**school record**)

15 rebounds was on 2/23/03 — Jacqueline Batteast (18) at Connecticut (UC 77-59)

20 rebounds was on 1/20/88 — Heidi Bunek (20) at DePaul (DPU 80-77)

10 assists was on 2/26/05 — Megan Duffy (10) vs. West Virginia (ND 82-57)*

5 blocks was on 2/26/05 — Teresa Borton (5) vs. West Virginia (ND 82-57)*

5 steals was on 11/27/05 — Megan Duffy (5) vs. USC (ND 73-62)*

a "double-double" was on 2/25/06 — Tulyah Gaines (14 pts., 11 reb.) at Cincinnati (ND 75-66 - ot)

a "triple-double" was on 2/15/90 — Sara Liebscher (17 pts., 12 reb., 10 asst.) vs. Detroit (ND 99-58)* (**only triple-double in school history**)

20 pts & 10 rebs was on 2/9/05 — Jacqueline Batteast (23 pts., 10 reb.) at Providence (ND 75-57)

20 pts & 20 rebs was on 1/20/88 — Heidi Bunek (25 pts., 20 reb.) at DePaul (DPU 80-77)

An opposing player had

25 points was on 2/12/06 — Allie Quigley (26), DePaul (DPU 79-50)

30 points was on 1/28/98 — Jen Beisel (30), Villanova (VU 70-54)*

35 points was on 1/16/95 — Angela Simpson (37), Northwestern State (La.) (NSU 103-93) (*NWIT Semifinal at Amarillo, Texas*)

10 rebounds was on 2/12/06 — Khara Smith (19), DePaul (DPU 79-50)

15 rebounds was on 2/12/06 — Khara Smith (19), DePaul (DPU 79-50)

20 rebounds was on 1/8/89 — Wendy Scholtens (20), Vanderbilt (VU 86-64)

10 assists was on 2/7/06 — Liad Suez-Karni (10), Villanova (VU 69-65 - ot)*

5 blocks was on 1/21/06 — Katrina Wheeler (6), Georgetown (ND 54-52)

5 steals was on 1/14/06 — Angel McCoughtry (7), Louisville (UL 61-51)

a "double-double" was on 2/12/06 — Khara Smith (12 pts., 19 reb.), DePaul (DPU 79-50)

a "triple-double" was on 2/7/06 — Liad Suez-Karni (14 pts., 10 reb., 10 asst.), Villanova (VU 69-65 - ot)*

* = indicates Notre Dame home game



2005-06 Notre Dame Women's Basketball Box Scores

GAME 1

#15/16 Notre Dame 55, Michigan 45
November 18, 2005
Joyce Center (Notre Dame, Ind.)

Michigan (45)

Table with columns: Player, min, fg-a, 3fg-a, ft-a, reb, ast, pf, tp. Rows include Jones, Dierdorf, Skrba, Helvey, Minnfield, Starling, Benson, Clement, Cooper, Walker, Queen, Team, and Totals.

Notre Dame (55)

Table with columns: Player, min, fg-a, 3fg-a, ft-a, reb, ast, pf, tp. Rows include Erwin, D'Amico, Gaines, Duffy, Schrader, Allen, Gray, LaVere, Team, and Totals.

Summary table for Michigan vs Notre Dame showing FG, FT, 3-PT FG, and Steals.

FG Pct: Michigan 32.1, Notre Dame 30.5. 3-PT FG Pct: Michigan 37.5, Notre Dame 0.0. FT Pct: Michigan 50.0, Notre Dame 65.5. Turnovers: Michigan 21, Notre Dame 19. Blocked Shots: Michigan 4 (Skrba 2), Notre Dame 2. Steals: Michigan 8 (Skrba 2), Notre Dame 12 (Duffy 4). Attendance: 6,134.

NOTES: Notre Dame head coach Muffet McGraw earned her 500th career win, becoming the 27th NCAA Division I coach to reach that milestone, and the 10th to do so before the age of 50 ... the Irish now are 21-8 (.724) all-time in season openers, including a 16-3 (.842) record in the McGraw era, and they have won their last 11 lidflitters, coinciding exactly with the program's membership in the BIG EAST Conference ... Notre Dame takes over the series lead against Michigan, 7-6, and has won six of its seven all-time matchups with the Wolverines at the Joyce Center ... Friday's game also marked the 350th Irish women's basketball game to be played at the Joyce Center (278-72, .794) ... Notre Dame's 54 rebounds were the most for the Irish in a single game since Dec. 12, 2001, when they plucked 56 boards in a win over Western Michigan ... the +21 rebound margin was the largest for Notre Dame since a similar spread (47-26) at Syracuse on Jan. 19, 2005 ... freshman guard Lindsay Schrader became the first Notre Dame rookie to start a season opener since Jacqueline Batteast and Teresa Borton did so against Valparaiso on Nov. 18, 2001 ... Schrader's 14 rebounds are the most for an Irish player since Batteast collected a career-high 18 boards at Connecticut on Feb. 23, 2003 ... Schrader's double-double also is only the second ever for a Notre Dame freshman in her college debut and first since the Irish program elevated to Division I status in 1980-81 (Shari Matvey had 21 points and 14 rebounds vs. Marion on Nov. 30, 1979) ... sophomore guard Charel Allen's 16 points were the most she has scored since she tossed in a career-high 17 points at Syracuse on Jan. 19, 2005 ... sophomore center Melissa D'Amico made her first collegiate start against Michigan and responded with 10 points and a career-high seven rebounds ... sophomore guard Tulyah Gaines also got her first college starting assignment vs. the Wolverines ... senior guard Megan Duffy hit three free throws late to avoid her first scoreless outing since March 27, 2004 vs. Penn State (NCAA Sweet 16 game at Hartford, Conn.); still Duffy dished out a game-high eight assists (her 37th career outing with at least five dimes) and ended up with a game-best four steals, just missing her sixth career five-theft performance.

GAME 2

#15/16 Notre Dame 71, Western Michigan 68
November 20, 2005
University Arena (Kalamazoo, Mich.)

Notre Dame (71)

Table with columns: Player, min, fg-a, 3fg-a, ft-a, reb, ast, pf, tp. Rows include Erwin, D'Amico, Gaines, Duffy, Schrader, Allen, Gray, LaVere, Team, and Totals.

Western Michigan (68)

Table with columns: Player, min, fg-a, 3fg-a, ft-a, reb, ast, pf, tp. Rows include Brown, Parker, DeLaHoussaye, Rost, Moore, Watkins, Owens, Team, and Totals.

Summary table for Notre Dame vs W. Michigan showing FG, FT, 3-PT FG, and Steals.

FG Pct: Notre Dame 41.5, Western Michigan 41.7. 3-PT FG Pct: Notre Dame 16.7, Western Michigan 42.1. FT Pct: Notre Dame 80.0, Western Michigan 76.9. Turnovers: Notre Dame 12, Western Michigan 18. Blocked Shots: Notre Dame 5 (D'Amico, LaVere 2), Western Michigan 2 (Parker 2). Steals: Notre Dame 6 (Duffy 2), Western Michigan 5 (Rost 3). Attendance: 2,116.

NOTES: Leading for all but the first 1:26 of the contest, Notre Dame won its road opener for the fourth consecutive season and seventh time in the past eight years ... ND started the season 2-0 for the third time in four years and 10th time in the 19-year Muffet McGraw era ... the Irish improve to 8-0 all-time against Western Michigan, including a 3-0 record in Kalamazoo ... the three-point margin was the closest in the eight-game series, topping a 68-62 Notre Dame victory spread on Dec. 8, 1982, also in Kalamazoo ... the Irish have scored 70 points in seven of their eight all-time matchups with the Broncos ... WMU tallied its highest point total ever against Notre Dame, exceeding the 65-point mark it had in a 94-65 loss to the Irish on Dec. 2, 1985, the clubs' most recent contest at University Arena prior to this year; in fact all three of the Broncos' 60-point games vs. Notre Dame have come in Kalamazoo ... the Irish have won 10 consecutive games against Mid-American Conference opponents, a streak that dates back to 1995 ... Notre Dame is 99-8 (.925) during the past six years when leading at halftime, having won 28 of its last 30 such games (2-0 this year) ... Western Michigan guard Casey Rost tied a Notre Dame opponent record by canning seven three-pointers, with Connecticut's Ann Strother the most recent foe to reach that total, doing so on nine attempts in a 65-59 Irish win on Jan. 30, 2005 in Storrs, Conn. ... with two assists at WMU, senior guard Megan Duffy moved past former teammate Le Tania Severe (2000-04) into seventh place on Notre Dame's career assist chart with 386 handouts ... with her next point, senior forward Courtney LaVere will reach the 900-point mark for her career ... LaVere also had two blocked shots against the Broncos and is two away from becoming the eighth player in school history to record 100 career blocks.

GAME 3

#13/15 Notre Dame 74, Indiana 61
November 23, 2005
Assembly Hall (Bloomington, Ind.)

Notre Dame (74)

Table with columns: Player, min, fg-a, 3fg-a, ft-a, reb, ast, pf, tp. Rows include Erwin, D'Amico, Gaines, Duffy, Schrader, Allen, Smith, Gray, LaVere, Team, and Totals.

Indiana (61)

Table with columns: Player, min, fg-a, 3fg-a, ft-a, reb, ast, pf, tp. Rows include Thomas, DeMuth, Hawkins, Valentini, Smith, N. Boyd, Kullberg, Enterline, McKay, Roberson, Smith, C. Branson, Team, and Totals.

Summary table for Notre Dame vs Indiana showing FG, FT, 3-PT FG, and Steals.

FG Pct: Notre Dame 54.9, Indiana 40.0. 3-PT FG Pct: Notre Dame 46.2, Indiana 14.3. FT Pct: Notre Dame 66.7, Indiana 69.6. Turnovers: Notre Dame 13, Indiana 19. Blocked Shots: Notre Dame 7 (D'Amico 3), Indiana 1. Steals: Notre Dame 8 (Duffy 4), Indiana 4. Attendance: 976.

NOTES: Notre Dame starts the season 3-0 for the second consecutive season and third time in the past four seasons ... the Irish move to 6-3 all-time against Indiana, including a 3-1 record in Bloomington ... Notre Dame has won its last three games at Assembly Hall and has a series-long three-game winning streak ... the 13-point margin of victory represents the first time in the nine-game series between the Irish and Hoosiers that a game was decided by double figures ... Notre Dame registers its second win in as many games against a Big Ten Conference opponent this season (also the second year in a row the Irish have earned two Big Ten wins) ... It's also the first win for Notre Dame on the campus of a Big Ten school since Nov. 22 and 24, 2001, when the Irish downed #19 Wisconsin (83-56) and #6 Georgia (75-73) at UW's Kohl Center to win the Coaches vs. Cancer Challenge ... Notre Dame now is 9-5 (.643) all-time in its final game before Thanksgiving, including a 7-3 (.700) record since 1996, when the Irish regularly began opening their season prior to the holiday ... the Irish have won 29 of their last 31 games when leading at the half and are 100-8 (.926) in such contests during the past six seasons ... Notre Dame's .549 field goal percentage is its best since Feb. 26, 2005, when the Irish connected at a .582 clip (32-of-55) in a Senior Day victory over West Virginia at the Joyce Center ... senior All-America guard Megan Duffy pumped in a career-high 26 points, one more than her previous best of 25, which she set in an 82-64 win over Wisconsin on Dec. 4, 2003 at the Joyce Center ... it's also the most points for an Irish player since Jacqueline Batteast had 27 points at Marquette on Dec. 19, 2004 ... almost lost in the shuffle, Duffy have five assists and no turnovers while playing all 40 minutes, her first turnover-free complete game since Jan. 9, 2005 at Villanova, when she had seven assists and no giveaways in a 59-54 upset loss to the Wildcats ... with her five assists, Duffy eased past Jeannine Augustin into sixth place on Notre Dame's career assist list with 391 (Augustin had 387 from 1994-97) ... junior guard Breona Gray came off the bench to score 14 points, her eighth career double-figure scoring game and highest point production since a career-best 17 points against Syracuse on Jan. 5, 2005 at the Joyce Center ... senior forward Courtney LaVere reached two milestones - her first basket (a jumper with 8:16 left in the first half) pushed her over the 900-point mark for her career (now at 905) ... LaVere also had two blocked shots, giving her an even 100 blocks for her career and making her the eighth player in school history to reach that landmark ... freshman forward Chandrica Smith made her college debut at Indiana, playing three minutes.





2005-06 Notre Dame Women's Basketball Box Scores

GAME 13

Seton Hall 74, #12/12 Notre Dame 61
January 7, 2006
Joyce Center (Notre Dame, Ind.)

Seton Hall (74)

Table with 10 columns: Player, min, fg-a, 3fg-a, ft-a, reb, ast, pf, tp. Lists players like Harris, Blake, Korpiavaara, Brown, Rhodin, Womack, Shutz, Messina, Costello, Team, and Totals.

Notre Dame (61)

Table with 10 columns: Player, min, fg-a, 3fg-a, ft-a, reb, ast, pf, tp. Lists players like Erwin, D'Amico, Gaines, Duffy, Schrader, Allen, Smith, Gray, LaVere, Team, and Totals.

Summary table comparing Seton Hall and Notre Dame totals for FG, 3PT, FT, and other stats.

FG Pct: Seton Hall 40.7, Notre Dame 35.8. 3-PT FG Pct: Seton Hall 53.8, Notre Dame 27.3. FT Pct: Seton Hall 79.3, Notre Dame 58.8. Turnovers: Seton Hall 16, Notre Dame 9. Blocked Shots: Seton Hall 3 (Korpiavaara 2), Notre Dame 5 (LaVere 3). Steals: Seton Hall 2, Notre Dame 9 (Gaines 4). Attendance: 6,854.

NOTES: Notre Dame suffers its third consecutive loss, the first time the Irish have dropped three in a row since Dec. 3-8, 1997, when Notre Dame fell at Rutgers (80-67)...

GAME 14

#20/19 Notre Dame 67, Marquette 65 (OT)
January 10, 2006
Joyce Center (Notre Dame, Ind.)

Marquette (65)

Table with 10 columns: Player, min, fg-a, 3fg-a, ft-a, reb, ast, pf, tp. Lists players like Kamm, Quaye, McCullough, Kieger, Ellis, Monfre, Johnson, Shirley, Kovalenko, Thrower, Team, and Totals.

Notre Dame (67)

Table with 10 columns: Player, min, fg-a, 3fg-a, ft-a, reb, ast, pf, tp. Lists players like Erwin, D'Amico, Gaines, Duffy, Schrader, Allen, Gray, LaVere, Team, and Totals.

Summary table comparing Marquette and Notre Dame totals for FG, 3PT, FT, and other stats.

FG Pct: Marquette 40.0, Notre Dame 33.3. 3-PT FG Pct: Marquette 47.1, Notre Dame 38.5. FT Pct: Marquette 81.3, Notre Dame 66.7. Turnovers: Marquette 18, Notre Dame 11. Blocked Shots: Marquette 2 (McCullough 2), Notre Dame 4. Steals: Marquette 4 (Ellis 2), Notre Dame 8 (Allen 3). Attendance: 5,281.

NOTES: Notre Dame now leads the all-time series with Marquette, 27-4, including a 16-1 mark at the Joyce Center ... the Irish have won 10 in a row and 26 of the past 27 meetings with the Golden Eagles ...

GAME 15

Louisville 61, #20/19 Notre Dame 51
January 14, 2006
Freedom Hall (Louisville, Ky.)

Notre Dame (51)

Table with 10 columns: Player, min, fg-a, 3fg-a, ft-a, reb, ast, pf, tp. Lists players like Erwin, LaVere, Gaines, Duffy, Schrader, Allen, Smith, Gray, D'Amico, Team, and Totals.

Louisville (61)

Table with 10 columns: Player, min, fg-a, 3fg-a, ft-a, reb, ast, pf, tp. Lists players like Covington, Taylor, Huggins, Neal, Olson, Barlow, Tokova, Johnson, McCoughtry, Wright, Team, and Totals.

Summary table comparing Notre Dame and Louisville totals for FG, 3PT, FT, and other stats.

FG Pct: Notre Dame 31.7, Louisville 36.8. 3-PT FG Pct: Notre Dame 33.3, Louisville 30.0. FT Pct: Notre Dame 85.7, Louisville 88.4. Turnovers: Notre Dame 13, Louisville 22. Blocked Shots: Notre Dame 4 (Allen, LaVere 2), Louisville 5 (Taylor 2). Steals: Notre Dame 10 (Allen, Duffy, Smith 2), Louisville 9 (McCoughtry 7). Attendance: 3,493.

NOTES: Notre Dame drops its fourth game in the last five outings, its first 1-4 stretch since early in the 2001-02 season, when the Irish won their opener, then lost four of five before rebounding for a 20-10 record and trip to the second round of the NCAA Tournament ...





2005-06 Notre Dame Women's Basketball Box Scores

GAME 25

Notre Dame 70, West Virginia 58
February 22, 2006
WVU Coliseum (Morgantown, W.Va.)

Notre Dame (70)

Player	min	fg-a	3fg-a	ft-a	reb	ast	pf	tp
LaVere	23	2-3	0-0	0-0	5	3	4	4
Gaines	26	3-5	0-0	0-0	3	2	3	6
Duffy	34	7-12	5-9	3-4	4	2	3	22
Schrader	25	3-6	0-0	3-6	5	0	0	9
Gray	24	2-5	1-3	0-0	1	2	2	5
Allen	25	5-12	1-3	1-2	2	1	0	12
Smith	2	0-1	0-0	0-0	0	0	0	0
D'Amico	16	1-3	0-0	0-0	2	2	1	2
Erwin	25	4-4	0-0	2-2	3	2	1	10
Team					3			
Totals	200	27-51	7-15	9-14	28	14	14	70

West Virginia (58)

Player	min	fg-a	3fg-a	ft-a	reb	ast	pf	tp
Sanni	37	4-14	0-0	4-9	7	0	2	12
Owens	30	5-12	2-7	0-0	3	1	2	12
Davis-White	36	2-7	0-3	2-2	4	0	2	6
Cole	40	7-13	0-1	2-2	5	4	2	16
Powell	27	2-3	0-0	1-2	6	5	3	5
Bucar	13	2-4	1-2	0-1	0	0	1	5
Leuchanka	16	1-4	0-0	0-0	4	2	1	2
Lee	1	0-0	0-0	0-0	2	0	0	0
Team					6			
Totals	200	23-57	3-13	9-16	37	12	13	58

Notre Dame 24 46 -- 70
West Virginia 28 30 -- 58

FG Pct: Notre Dame 52.9, West Virginia 40.4. **3-PT FG Pct:** Notre Dame 46.7, West Virginia 23.1. **FT Pct:** Notre Dame 64.3, West Virginia 56.3. **Turnovers:** Notre Dame 15, West Virginia 19. **Blocked Shots:** Notre Dame 4 (LaVere 2), West Virginia 6 (Leuchanka 3). **Steals:** Notre Dame 12 (Duffy 4), West Virginia 8 (Cole 4). **Attendance:** 1,203.

NOTES: Notre Dame broke out its green road jerseys for the WVU game, the first time the Irish have sported the greens since March 27, 2004, in a 55-49 loss to #5/7 Penn State in the NCAA Sweet 16 at Hartford, Conn. ... it's the first time Notre Dame has won in the green uniforms since March 17, 2001, when the Irish trounced Alcorn State, 98-49 in the opening round of the NCAA Tournament at the Joyce Center (kick-starting their run to the national championship) ... it also marked the first time Notre Dame wore its green togs in regular season play since Dec. 8, 1999, when the Irish dropped a 71-61 decision at #18/16 Purdue after winning its two prior games in the greens (99-86 vs. #9/12 North Carolina and 85-68 vs. Liberty in the Wachovia Women's Basketball Invitational at Richmond, Va.) ... Notre Dame is 6-4 all-time in its green uniforms (3-1 regular season, 3-3 postseason) ... in the 29-year history of Notre Dame women's basketball, the Irish now have had 25 winning seasons, one at exactly .500, and just three losing campaigns ... the Irish posted their first 70-point game since Jan. 17 vs. #10 DePaul (78-75 ND win) ... Notre Dame's 46-point second half was one better than its previous top scoring half of the year (45 in the first half vs. Arkansas State on Dec. 17) ... the WVU game was the fifth time the Irish shot 50 percent or better in a game this year, and first since a season-best .560 effort in a 66-63 loss at St. John's on Jan. 4 ... Notre Dame knocked down a season-high seven three-pointers, one more than its totals against Indiana (Nov. 23) and Tennessee (Dec. 31); the Irish have sharpened their shooting eye from beyond the arc in the past two games, hitting half their three-point attempts (11-of-22) ... the WVU contest was the sixth in seven games the Irish had 15 turnovers or less (the only blemish was a 16-turnover night vs. #8/6 Connecticut last Sunday) ... Notre Dame had at least three double-figure scorers for the seventh consecutive game and 19th time in 25 games this season ... the Irish have won three games this season after trailing at halftime (also Marquette and Syracuse) ... Notre Dame improves to 9-0 this season when holding its opponent under 60 points ... the Irish are 14-1 all-time against West Virginia (6-1 in Morgantown) and have scored 70+ points in 12 of 15 meetings with the Mountaineers; in addition, Notre Dame has held WVU under 60 points eight times ... senior All-America guard Megan Duffy posted her seventh 20-point game of the year and has logged 10 straight double-figure outings ... Duffy's five three-pointers were the most by an Irish player in almost exactly two years (Feb. 21, 2004), when Jeneka Joyce canned five treys in a 72-68 win at Pittsburgh ... sophomore guard Charel Allen has scored in double digits in five consecutive games and six of the past seven ... junior forward Crystal Erwin collected her fifth double-digit scoring game of the year and first since a similar 10-point night vs. #10 DePaul on Jan. 17.



GAME 26

Notre Dame 75, Cincinnati 66 (OT)
February 25, 2006
Fifth Third Arena (Cincinnati, Ohio)

Notre Dame (75)

Player	min	fg-a	3fg-a	ft-a	reb	ast	pf	tp
LaVere	38	8-11	0-0	1-3	7	2	2	2
Gaines	34	3-7	0-0	8-9	11	4	4	14
Duffy	43	4-8	1-2	8-8	4	3	2	17
Schrader	28	5-8	0-0	1-2	2	4	1	11
Gray	24	1-3	1-2	0-0	2	2	2	3
Allen	30	2-12	0-0	1-4	3	2	3	5
Tsipis	0+	0-0	0-0	0-0	0	0	0	0
Smith	0+	0-0	0-0	0-0	0	0	0	0
D'Amico	12	2-2	0-0	0-0	4	0	1	4
Erwin	16	2-4	0-0	0-0	3	0	2	4
Team					2			
Totals	225	27-55	2-4	19-26	38	17	17	75

Cincinnati (66)

Player	min	fg-a	3fg-a	ft-a	reb	ast	pf	tp
Jones	32	5-14	0-0	1-2	9	1	4	11
Stephens, A.	7	1-3	0-0	0-0	3	0	0	2
Harvey	31	0-8	0-4	2-2	1	5	3	2
Bellman	40	4-14	1-5	1-2	8	2	1	10
Humphries	37	6-15	0-3	2-5	5	3	5	14
May	2	0-1	0-0	0-0	0	0	2	0
Ogide	5	0-2	0-0	2-2	1	0	1	2
Roudebush	5	0-0	0-0	0-0	2	0	0	0
Morgan	20	2-4	0-0	0-0	2	0	3	4
Twehues	28	4-9	3-7	3-3	4	1	4	14
Stephens, J.	18	2-3	1-1	2-2	4	0	1	7
Team					2			
Totals	225	24-73	5-20	13-18	41	12	24	66

Notre Dame 28 29 18 -- 75
Cincinnati 24 33 9 -- 66

FG Pct: Notre Dame 49.1, Cincinnati 32.9. **3-PT FG Pct:** Notre Dame 50.0, Cincinnati 25.0. **FT Pct:** Notre Dame 73.1, Cincinnati 72.2. **Turnovers:** Notre Dame 14, Cincinnati 11. **Blocked Shots:** Notre Dame 5 (LaVere 4), Cincinnati 2. **Steals:** Notre Dame 5 (Allen 2), Cincinnati 7 (Bellman 2). **Attendance:** 1,072.

NOTES: Notre Dame played its school-record fourth overtime game of the season, breaking the old mark of three set by the 1995-96 Irish squad ... all four of Notre Dame's OT games have come against BIG EAST Conference opponents (Marquette, South Florida, Villanova and Cincinnati), setting a new league record for regular-season overtime contests in BIG EAST play (previous: three on three occasions, most recently by Boston College and St. John's in 1990-91) ... the Irish were facing Cincinnati for the first time in more than 14 years and second time ever, following a 67-58 ND win on Feb. 13, 1982 in South Bend ... Notre Dame had been shooting 66 percent from the free throw line in the final two minutes of regulation plus overtime this season, but went 10-for-11 (.909) at the charity stripe when it counted most at Cincinnati: senior guard Megan Duffy's 8-of-8 effort makes her 38-of-40 (.950) in such situations this year ... the Irish had at least three double-digit scorers for the eighth consecutive game and 20th time in 26 outings this season ... Notre Dame's 28-24 halftime lead was its first at the break since Feb. 4 vs. Providence ... Notre Dame topped the 70-point mark for the second game in a row, the first time it has done that since a five-game stretch from Nov. 20-Dec. 4 ... sophomore guard Tulyah Gaines set new career highs with 14 points (previous: 12, twice, last vs. Seton Hall on Jan. 7), 11 rebounds (previous: nine vs. West Virginia on Feb. 26, 2005) and eight free throws made (tied previous mark set against Seton Hall on Jan. 7) ... Gaines is the fourth different Irish player to notch a double-double this year, joining freshman guard Lindsay Schrader (two), sophomore center Melissa D'Amico (one) and junior forward Crystal Erwin (one); Gaines' double-double was the first by a Notre Dame player since Erwin's double-dip on Jan. 4 at St. John's ... Duffy's current 11-game double-figure scoring streak not only remains a career best, but also is the longest in a single season since Jacqueline Batteast had a 12-game run early in her freshman campaign of 2001-02 ... Duffy's 17 points boosted her into 14th place on the Notre Dame career scoring list with 1,228 points, passing Letitia Bowen (1,219 from 1991-95) ... senior forward Courtney LaVere also moved up a spot on the Irish all-time points list, now with 1,109 points to surpass Danielle Green (1,106 from 1995-2000) for 18th in Notre Dame history ... LaVere's four blocks were the most by an Irish player in a game since Teresa Borton had five vs. West Virginia on Feb. 26, 2005; LaVere also rose to sixth place on the school's career blocks list with 134 swats, passing Shari Matvey who had 133 from 1979-83.

#1 Tulyah Gaines

Guard • 5-7 • So.-1V • North Las Vegas, Nev. (Cheyenne HS)

2005-06 Highlights

- ◆ Has started 16 times this season, the first starting assignments of her career ... averaging 4.6 points and 3.0 rebounds per game.
- ◆ Had six points, four rebounds and three steals in season-opening win vs. Michigan.
- ◆ Added six points and five rebounds in victory at Western Michigan.
- ◆ Suffered injury to right ankle two minutes into game at Indiana ... *did not play vs. USC.*
- ◆ Returned to action vs. Iona, ending up with five points and four rebounds.
- ◆ Scored 11 points (4-5 FG) at Wisconsin, including critical driving layup to beat shot clock with 1:57 left.
- ◆ Had five points, three assists and three steals vs. Arkansas State in Duel in the Desert opener at Las Vegas.
- ◆ Logged four points in 14 minutes against #1 Tennessee.
- ◆ Returned to starting lineup vs. Seton Hall and responded well, setting or tying career marks for points (12), assists (5), steals (4) and minutes played (30).
- ◆ Tossed in eight points against #10 DePaul, including four key free throws in the final 1:34 to help seal victory.
- ◆ Collected five points in 30 minutes at #10/9 Rutgers.
- ◆ Registered three points, four assists and tied career high with four steals at Syracuse.
- ◆ Notched six points, eight rebounds and three steals against Providence.
- ◆ Grabbed six rebounds against Villanova.
- ◆ Tallied six points and four rebounds at #17/15 DePaul.
- ◆ Scored six points (3-5 FG) in 26 minutes at West Virginia.
- ◆ Erupted for first career double-double in overtime win at Cincinnati, posting career bests of 14 points (8-9 FT) and 11 rebounds in 34 minutes ... also sank game-tying layup as time expired in regulation.



Career Highs

Points

Career..... 14 at Cincinnati (2/25/06)

Rebounds

Career..... 11 at Cincinnati (2/25/06)

Assists

Career..... 5 vs. Seton Hall (1/7/06)

Field Goals

Career..... 4, twice (MR: at Wisconsin, 12/4/05)

Field Goal Attempts

Career..... 7, three times (MR: at Cin., 2/25/06)

Three-Point Field Goals

Career..... None

Three-Point Field Goal Attempts

Career..... None

Free Throws

Career..... 8, twice (MR: at Cincinnati, 2/25/06)

Free Throw Attempts

Career..... 12 vs. Seton Hall (1/7/06)

Steals

Career..4, twice (MR: at Syracuse, 1/31/06)

Blocked Shots

Career..... 1, three times (MR: vs. S. Hall, 1/7/06)

Minutes Played

Career..... 34 vs. Cincinnati (2/25/06)

Miscellaneous

Double-doubles..... 1/1
 Double-figure scoring games..... 3/4
 20-point games..... 0/0
 Double-figure assist games..... 0/0
 5-assist games..... 1/1
 5-steal games..... 0/0
(noted in season/career format)

Gaines' Career Statistics

Season	GP-GS	Min.-Avg.	FG-FGA	Pct.	3FG-3FGA	Pct.	FT-FTA	Pct.	Off	Def	Tot	Avg.	PF-DQ	A	T	B	S	Pts	Avg.
2004-05	29-0	398-13.7	21-63	.333	0-0	.000	27-42	.643	17	40	57	2.0	39-0	31	56	1	24	69	2.4
2005-06	25-16	519-20.8	33-88	.375	0-0	.000	49-75	.653	26	50	76	3.0	51-0	34	59	2	24	115	4.6
TOTALS	54-16	917-17.0	54-151	.358	0-0	.000	76-117	.650	43	90	133	2.5	90-0	65	115	3	48	184	3.4

2005-06 Game-By-Game Statistics — Tulyah Gaines

Date	Opponent	Min	FG-FGA	3FG-FGA	FT-FTA	Off	Def	Tot	PF	A	TO	Blk	Stl	Pts
N18	Michigan^	22	1-5	0-0	4-7	0	4	4	2	0	1	0	3	6
N20	@ Western Michigan^	24	2-3	0-0	2-2	2	3	5	2	1	3	0	0	6
N23	@ Indiana^	2	0-1	0-0	0-0	1	0	1	0	0	0	0	0	0
N27	#24/21 USC	Did not play — injured												
N29	Iona	18	1-4	0-0	3-4	2	2	4	1	0	4	0	1	5
D4	@ Wisconsin	24	4-5	0-0	3-5	0	1	1	2	1	3	0	0	11
D7	@ #24/23 Purdue	16	1-4	0-0	1-5	1	2	3	3	1	4	0	2	3
D17	vs. Arkansas State ¹	19	1-7	0-0	3-4	0	1	1	1	3	1	0	3	5
D18	vs. #22/21 Utah ¹	13	0-0	0-0	2-2	1	1	2	4	0	1	0	0	2
D28	Valparaiso	18	1-1	0-0	0-0	2	2	4	0	1	1	1	0	2
D31	#1/1 Tennessee	14	1-2	0-0	2-2	0	1	1	2	0	2	0	0	4
J4	• @ St. John's	17	1-1	0-0	0-0	0	0	0	1	2	1	0	1	2
J7	• Seton Hall^	30	2-5	0-0	8-12	1	3	4	4	5	2	1	4	12
J10	• Marquette^	18	2-3	0-0	0-0	1	1	2	3	1	1	0	0	4
J14	• @ Louisville^	23	0-4	0-0	0-0	0	2	2	3	3	4	0	0	0
J17	• #10/10 DePaul^	21	2-5	0-0	4-7	0	0	0	2	0	3	0	0	8
J21	• @ Georgetown^	14	1-4	0-0	0-1	0	2	2	2	0	2	0	0	2
J24	• @ #10/9 Rutgers^	30	1-3	0-0	3-6	1	1	2	3	0	8	0	0	5
J28	• South Florida^	19	0-1	0-0	0-0	0	0	0	1	2	1	0	1	0
J31	• @ Syracuse	28	1-2	0-0	1-2	2	1	3	2	4	2	0	4	3
F4	• Providence^	30	3-7	0-0	0-0	3	5	8	1	3	7	0	3	6
F7	• Villanova^	29	0-2	0-0	3-4	1	5	6	1	1	1	0	0	3
F12	• @ #17/15 DePaul^	20	2-5	0-0	2-3	3	1	4	4	0	1	0	0	6
F19	• #8/6 Connecticut^	10	0-2	0-0	0-0	1	2	3	0	0	2	0	1	0
F22	• @ West Virginia^	26	3-5	0-0	0-0	0	3	3	3	2	2	0	0	6
F25	• @ Cincinnati^	34	3-7	0-0	8-9	4	7	11	4	4	2	0	1	14
F28	• Pittsburgh													

• = indicates BIG EAST Conference game // ^ = indicates game started
 1 = Duel in the Desert (Las Vegas, Nev.)

#2 Charel Allen

Guard • 5-11 • So.-1V • Monessen, Pa. (Monessen HS)

2005-06 Highlights

- ◆ Has come off bench in 58 of 59 career games to date ...averaging 8.4 points and 4.3 rebounds per game this season, primarily as part of solid Irish second unit ... has career-best 12 double-digit scoring games this season.
- ◆ Scored game-high 16 points (6-14 FG) in season opener vs. Michigan.
- ◆ Cracked double figures for second time this season with 11 points and career-high tying four assists at Indiana — six points came in game-changing 27-8 second-half run.
- ◆ Tossed in 13 points (4-7 FG) and hit three key free throws in the final minute to preserve victory over #24/21 USC.
- ◆ Had six points, five rebounds and three assists against Iona.
- ◆ Registered seven points at #24/23 Purdue.
- ◆ Matched career high with nine rebounds vs. #22/21 Utah in helping Irish win Duel in the Desert Gray Division championship.
- ◆ Collected eight points (4-7 FG) and seven rebounds in win over Valparaiso.
- ◆ Picked up four points and four rebounds against #1 Tennessee, and hit three-pointer in second half as part of 26-10 Irish rally.
- ◆ Logged six points and five rebounds in BIG EAST opener at St. John's.
- ◆ Notched first double-digit scoring game since late November (USC) with 10 points against Seton Hall.
- ◆ Dropped in 15 points in career-high 38 minutes vs. Marquette, nailing crucial three-pointer with 2:23 left in regulation that helped propel Irish to overtime win.
- ◆ Had team-best 10 points at Louisville, marking the first time in her career she has had three consecutive double-figure scoring games.
- ◆ Made first career start vs. #10 DePaul, scoring five points and grabbing three rebounds in 18 minutes.
- ◆ Tallied eight points (4-9 FG) and two steals in victory at Georgetown.
- ◆ Contributed 10 points and eight rebounds against South Florida.
- ◆ Recorded 10 points, eight rebounds, four assists and three steals vs. Providence.
- ◆ Had 14 points vs. Villanova, all coming in second half on 7-of-10 shooting in period.
- ◆ Posted team-high 15 points and plucked six rebounds at #17/15 DePaul.
- ◆ Shared team-best scoring honors vs. #8/6 Connecticut with 12 points.
- ◆ Chalked up 12 points in win at West Virginia.
- ◆ Scored in double figures in six of past eight outings (10.3 ppg.).



Career Highs

Points

Career..... 17 at Syracuse (1/19/05)

Rebounds

Career..... 9, three times (MR: vs. Utah, 12/18/05)

Assists

Career.... 4, three times (MR: vs. Prov., 2/4/06)

Field Goals

Career..... 7, four times (MR: at DePaul, 2/12/06)

Field Goal Attempts

Career..... 17 vs. Villanova (2/7/06)

Three-Point Field Goals

Career... 2, three times (MR: at Louisville, 1/14/06)

Three-Point Field Goal Attempts

Career..... 7 at Louisville (1/14/06)

Free Throws

Career..... 8 at Seton Hall (3/1/05)

Free Throw Attempts

Career..... 8, three times (MR: vs. USC, 11/27/05)

Steals

Career.... 5 vs. Colorado State (11/22/04)

Blocked Shots

Career..... 2, four times (MR: vs. Villanova, 2/7/06)

Minutes Played

Career..... 38 vs. Marquette (1/10/06)

Miscellaneous

Double-doubles..... 0/0
 Double-figure scoring games..... 12/21
 20-point games..... 0/0
 Double-figure rebound games..... 0/0
 5-assist games..... 0/0
 5-steal games..... 0/1
(noted in season/career format)

Allen's Career Statistics

Season	GP-GS	Min.-Avg.	FG-FGA	Pct.	3FG-3FGA	Pct.	FT-FTA	Pct.	Off	Def	Tot	Avg.	PF-DQ	A	T	B	S	Pts	Avg.
2004-05	33-0	794-24.1	87-199	.437	7-16	.438	72-85	.847	48	89	137	4.2	63-1	47	60	11	39	253	7.7
2005-06	26-1	636-24.5	89-237	.376	12-46	.261	28-47	.596	35	78	113	4.3	35-0	37	37	12	33	218	8.4
TOTALS	59-1	1430-24.2	176-436	.404	19-62	.306	100-132	.758	83	167	250	4.2	98-1	84	97	23	72	471	8.0

2005-06 Game-By-Game Statistics — Charel Allen

Date	Opponent	Min	FG-FGA	3FG-FGA	FT-FTA	Off	Def	Tot	PF	A	TO	Blk	Stl	Pts
N18	Michigan	28	6-14	0-1	4-4	2	3	5	3	0	4	1	2	16
N20	@ Western Michigan	18	2-5	0-0	0-2	3	2	5	0	1	1	0	1	4
N23	@ Indiana	29	5-8	1-2	0-1	0	4	4	2	4	3	0	1	11
N27	#24/21 USC	22	4-7	1-2	4-8	1	3	4	3	2	1	1	0	13
N29	Iona	22	2-7	0-0	2-2	1	4	5	1	3	0	0	2	6
D4	@ Wisconsin	17	2-4	0-0	1-2	0	2	2	0	1	1	0	2	5
D7	@ #24/23 Purdue	23	2-7	1-4	2-2	0	2	2	1	0	1	0	0	7
D17	vs. Arkansas State ¹	19	1-6	0-0	2-2	1	4	5	2	1	1	0	1	4
D18	vs. #22/21 Utah ¹	24	1-3	0-0	2-2	2	7	9	1	1	3	0	0	4
D28	Valparaiso	21	4-7	0-1	0-0	2	5	7	1	3	3	0	0	8
D31	#1/1 Tennessee	25	1-8	1-4	1-2	1	3	4	1	3	1	0	2	4
J4	• @ St. John's	28	3-8	0-0	0-0	1	4	5	1	2	3	0	1	6
J7	• Seton Hall	26	4-10	0-2	2-2	0	3	3	2	1	0	0	2	10
J10	• Marquette	38	5-16	1-4	4-4	3	0	3	0	2	1	1	3	15
J14	• @ Louisville	22	4-13	2-7	0-0	2	2	4	2	0	2	2	2	10
J17	• #10/10 DePaul [^]	18	2-6	1-1	0-0	1	2	3	0	0	2	0	0	5
J21	• @ Georgetown	23	4-9	0-1	0-0	0	1	1	1	0	2	1	2	8
J24	• @ #10/9 Rutgers	9	0-1	0-0	0-0	0	1	1	0	0	2	1	1	0
J28	• South Florida	28	5-11	0-1	0-0	3	5	8	0	0	0	0	1	10
J31	• @ Syracuse	19	2-6	0-0	0-2	1	4	5	2	2	0	0	2	4
F4	• Providence	31	4-12	1-2	1-2	2	6	8	2	4	0	0	3	10
F7	• Villanova	36	7-17	0-4	0-0	1	3	4	3	1	0	2	1	14
F12	• @ #17/15 DePaul	32	7-16	1-5	0-0	3	3	6	2	0	1	1	0	15
F19	• #8/6 Connecticut	23	5-12	1-2	1-4	3	2	5	2	3	2	1	0	12
F22	• @ West Virginia	25	5-12	1-3	1-2	1	1	2	0	1	2	0	2	12
F25	• @ Cincinnati	30	2-12	0-0	1-4	1	2	3	3	2	1	1	2	5
F28	• Pittsburgh													

• = indicates BIG EAST Conference game // ^ = indicates game started
 1 = Duel in the Desert (Las Vegas, Nev.)

#11 Amanda Tsipis

Guard • 5-9 • So.-1V • Perry, Ohio (Perry HS)

2005-06 Highlights

- ◆ Has appeared in six games for the Irish this season.
- ◆ Made 2005-06 season debut vs. Iona (0-1 3FG in three minutes).
- ◆ Matched career high with five minutes of action vs. Arkansas State (no stats).
- ◆ Played one minute late in victory over Valparaiso and loss at #10/9 Rutgers.
- ◆ Saw three minutes vs. Providence, committing one foul.
- ◆ Scored four points in each of Notre Dame's two exhibition games this year.



Career Highs

Points

Career.. 2, three times (MR: vs. WVU, 2/26/05)

Rebounds

Career.....1 at Pittsburgh (2/5/05)

Assists

Career.....1 at Dayton (12/9/04)

Field Goals

Career... 1, twice (MR: vs. WVU, 2/26/05)

Field Goal Attempts

Career.... 1, six times (MR: vs. Iona, 11/29/05)

Three-Point Field Goals

Career.....None

Three-Point Field Goal Attempts

Career.....1 vs. Iona (11/29/05)

Free Throws

Career.....2 at Northern Illinois (12/30/04)

Free Throw Attempts

Career.....2 at Northern Illinois (12/30/04)

Steals

Career.....None

Blocked Shots

Career.....None

Minutes Played

Career.....5, twice (MR: vs. Ark. St., 12/17/05)

Miscellaneous

Double-doubles..... 0/0
 Double-figure scoring games..... 0/0
 20-point games 0/0
 Double-figure assist games..... 0/0
 5-assist games 0/0
 5-steal games..... 0/0
(noted in season/career format)

Tsipis' Career Statistics

Season	GP-GS	Min.-Avg.	FG-FGA	Pct.	3FG-3FGA	Pct.	FT-FTA	Pct.	Off	Def	Tot	Avg.	PF-DQ	A	T	B	S	Pts	Avg.
2004-05	12-0	32-2.7	2-5	.400	0-0	.000	2-2	1.000	1	0	1	0.1	1-0	1	2	0	0	6	0.5
2005-06	6-0	13-2.2	0-1	.000	0-1	.000	0-0	.000	0	0	0	0.0	1-0	0	0	0	0	0	0.0
TOTALS	18-0	45-2.5	2-6	.333	0-1	.000	2-2	1.000	1	0	1	0.1	2-0	1	2	0	0	6	0.3

2005-06 Game-By-Game Statistics — Amanda Tsipis

Date	Opponent	Min	FG-FGA	3FG-FGA	FT-FTA	Off	Def	Tot	PF	A	TO	Blk	Stl	Pts
N18	Michigan		Did not play											
N20	@ Western Michigan		Did not play											
N23	@ Indiana		Did not play											
N27	#24/21 USC		Did not play											
N29	Iona	3	0-1	0-1	0-0	0	0	0	0	0	0	0	0	0
D4	@ Wisconsin		Did not play											
D7	@ #24/23 Purdue		Did not play											
D17	vs. Arkansas State ¹	5	0-0	0-0	0-0	0	0	0	0	0	0	0	0	0
D18	vs. #22/21 Utah ¹		Did not play											
D28	Valparaiso	1	0-0	0-0	0-0	0	0	0	0	0	0	0	0	0
D31	#1/1 Tennessee		Did not play											
J4	• @ St. John's		Did not play											
J7	• Seton Hall		Did not play											
J10	• Marquette		Did not play											
J14	• @ Louisville		Did not play											
J17	• #10/10 DePaul		Did not play											
J21	• @ Georgetown		Did not play											
J24	• @ #10/9 Rutgers	1	0-0	0-0	0-0	0	0	0	0	0	0	0	0	0
J28	• South Florida		Did not play											
J31	• @ Syracuse		Did not play											
F4	• Providence	3	0-0	0-0	0-0	0	0	0	1	0	0	0	0	0
F7	• Villanova		Did not play											
F12	• @ #17/15 DePaul		Did not play											
F19	• #8/6 Connecticut		Did not play											
F22	• @ West Virginia		Did not play											
F25	• @ Cincinnati	0+	0-0	0-0	0-0	0	0	0	0	0	0	0	0	0
F28	• Pittsburgh													

• = indicates BIG EAST Conference game // ^ = indicates game started
 1 = Duel in the Desert (Las Vegas, Nev.)

#13 Megan Duffy

Guard • 5-7 • Sr.-3V • Dayton, Ohio (Chaminade-Julienne HS)

2005-06 Awards

- ◆ BIG EAST Player of the Week (Jan. 23, Feb. 27) // Weekly Honor Roll (Nov. 28, Dec. 5, Dec. 19)
- ◆ Duel in the Desert (Gray Division) All-Tournament Team
- ◆ Nancy Lieberman Award Nominee (top point guard in nation)
- ◆ Naismith Trophy Mid-Season Candidate
- ◆ ESPN The Magazine/CoSIDA Academic All-District V First Team
- ◆ State Farm/WBCA Wade Trophy Watch List
- ◆ Consensus preseason All-American (WBB News Service, Lindy's, Street & Smith's)
- ◆ Top five point guards in the nation (ESPN.com)
- ◆ Preseason all-BIG EAST
- ◆ Senior CLASS Award Nominee

2005-06 Highlights

- ◆ Started all 26 games this year (63 starts in a row and 90 of past 91 games; only non-start came March 2, 2004 vs. Syracuse, after yielding place in lineup for Senior Night).
- ◆ Leads team and ranks among top 10 in BIG EAST in scoring (8th - 15.7 ppg.), free throw percentage (1st - .894; 11th in NCAA as of Feb. 21), assists (8th - 4.19 apg.), steals (7th - 2.00 spg.) and assist/turnover ratio (10th - 1.73) ... scored in double figures 22 times and led team 13 times.
- ◆ Tallied team-best 19 points and seven rebounds at Western Michigan (4-4 FT in final :26).
- ◆ Logged 26 points at Indiana, including 13 in a game-changing 27-8 run late in the second half.
- ◆ Finished with game-best 19 points vs. #24/21 USC, with six assists and six steals.
- ◆ Carded 17 of game-high 21 points vs. Iona in second half (7-10 FG, 3-6 3FG in final frame).
- ◆ Scored game-best 20 points at Wisconsin, including 6-of-6 FT in final 30 seconds.
- ◆ Notched 12 points and eight assists (no turnovers) in 40-minute effort vs. #22/21 Utah.
- ◆ Sparked second-half comeback vs. #1 Tennessee, scoring 14 of her game-high 19 points after the break as Irish got within six on her short bank shot with 1:55 left.
- ◆ **Became 21st 1,000-point scorer in program history** with 13 points at St. John's.
- ◆ Erupted for career-high 32 points vs. Marquette, including game-winning layup as time expired in OT; also hit tying 3FG with :26 left in OT and nearly won game in regulation on trey with :38 left.
- ◆ Had 23 points, nine assists and career-high-tying eight rebounds in win over #10 DePaul ... just missed logging program's first triple-double in 16 years (and second in school history).
- ◆ Logged team-high 16 points, five assists and five rebounds in victory at Georgetown.
- ◆ Collected 25 points and tied career high with 45 minutes played in OT loss to South Florida.
- ◆ Registered 12 points, eight rebounds and six steals in win over Providence.
- ◆ Notched 15 points, six rebounds and five assists and went all 45 minutes in OT loss to Villanova ... hit game-tying layup with :11 remaining in regulation.
- ◆ Tallied 11 points and six assists in complete-game effort vs. #8/6 Connecticut.
- ◆ Rang up 17 of game-high 22 points in second half at West Virginia (5-7 FG, 4-6 3FG in period).
- ◆ Carded 17 points in overtime win at Cincinnati (10 points, including 8-of-8 FT in overtime).
- ◆ Scored in double figures in past 10 games, setting a new career best (previous: six in 2004-05).

Duffy In The Notre Dame Career Record Books

- ◆ First in minutes per game (32.82)
- ◆ Second in free throw percentage (.860) — tie-14th in NCAA history (*pending*)
- ◆ Second in minutes played (4,037)
- ◆ Fourth in free throws made (386)
- ◆ Fifth in free throw attempts (449)
- ◆ Fifth in three-point field goals made (154)
- ◆ Fifth in three-point field goal attempts (423)
- ◆ Sixth in assists (485)
- ◆ Sixth in steals (213)
- ◆ Sixth in assists per game (3.94)
- ◆ Ninth in steals per game (1.73)
- ◆ 14th in points (1,228)

Duffy's Career Statistics

Season	GP-GS	Min.-Avg.	FG-FGA	Pct.	3FG-3FGA	Pct.	FT-FTA	Pct.	Off	Def	Tot	Avg.	PF-DQ	A	T	B	S	Pts	Avg.
2002-03	32-5	748-23.4	22-91	.242	7-35	.200	45-59	.763	9	51	60	1.9	59-1	73	78	1	26	96	3.0
2003-04	32-31	1066-33.3	93-231	.403	46-114	.404	86-105	.819	11	82	93	2.9	56-0	125	92	1	45	318	9.9
2004-05	33-33	1222-37.0	110-252	.437	50-125	.400	137-153	.895	7	94	101	3.1	50-0	178	103	2	90	407	12.3
2005-06	26-26	1001-38.5	119-300	.397	51-149	.342	118-132	.894	12	88	100	3.8	44-0	109	63	2	52	407	15.7
TOTALS	123-95	4037-32.8	344-874	.394	154-423	.364	386-449	.860	39	315	354	2.9	209-1	485	336	6	213	1228	10.0



Career Highs

Points

Career..... 32 vs. Marquette (1/10/06)

Rebounds

Career.... 8, three times (MR: vs. Prov., 2/4/06)

Assists

Career..... 11 vs. Rutgers (1/23/05)

Field Goals

Career.....9 vs. Iona (11/29/05)

Field Goal Attempts

Career.....20 vs. Iona (11/29/05)

Three-Point Field Goals

Career..... 6 vs. Wisconsin (12/4/03)

Three-Point Field Goal Attempts

Career.....11 vs. Iona (11/29/05)

Free Throws

Career..... 12 vs. Marquette (1/10/06)

Free Throw Attempts

Career... 13, three times (MR: vs. USF, 1/28/06)

Steals

Career..... 7, three times (MR: at UConn, 1/30/05)

Blocked Shots

Career... 1, six times (MR: vs. Tenn., 12/31/05)

Minutes Played

Career....45, three times (MR: vs. Villanova, 2/7/06)

Miscellaneous

Double-doubles..... 0/2
 Double-figure scoring games..... 22/62
 20-point games 7*/12*
 Double-figure assist games..... 0/4
 5-assist games 11/47
 5-steal games..... 1/6

* = includes one 30-point game
 (noted in season/career format)

2005-06 Game-By-Game Statistics — Megan Duffy

Date	Opponent	Min	FG-FGA	3FG-FGA	FT-FTA	Off	Def	Tot	PF	A	TO	Blk	Stl	Pts
N18	Michigan [^]	39	0-5	0-0	3-4	1	3	4	1	8	3	0	4	3
N20	@ Western Michigan [^]	39	5-10	1-4	8-8	0	7	7	1	2	3	0	2	19
N23	@ Indiana [^]	40	8-15	3-6	7-8	0	1	1	2	5	0	0	4	26
N27	#24/21 USC [^]	40	6-16	3-8	4-4	0	2	2	1	6	1	0	6	19
N29	Iona [^]	31	9-20	3-11	0-0	0	2	2	1	3	0	1	1	21
D4	@ Wisconsin [^]	39	5-14	1-5	9-10	3	3	6	3	5	5	0	3	20
D7	@ #24/23 Purdue [^]	40	4-11	0-3	4-4	0	7	7	3	2	5	0	0	12
D17	vs. Arkansas State ^{1^}	26	5-11	3-8	0-0	1	4	5	1	6	1	0	2	13
D18	vs. #22/21 Utah ^{1^}	40	4-10	1-5	3-4	0	2	2	2	8	0	0	3	12
D28	Valparaiso [^]	38	3-11	1-6	0-0	0	1	1	0	2	2	0	0	7
D31	#1/1 Tennessee [^]	40	5-18	3-10	6-6	1	2	3	1	2	4	1	2	19
J4	• @ St. John's [^]	40	5-9	2-3	1-2	1	4	5	3	2	6	0	0	13
J7	• Seton Hall [^]	37	3-12	2-7	0-0	0	3	3	2	3	1	0	1	8
J10	• Marquette [^]	44	8-15	4-7	12-13	1	4	5	3	1	3	0	2	32
J14	• @ Louisville [^]	37	2-10	2-6	2-2	0	1	1	2	4	4	0	2	8
J17	• #10/10 DePaul [^]	39	6-12	2-6	9-9	1	7	8	1	9	2	0	3	23
J21	• @ Georgetown [^]	40	5-8	2-5	4-4	0	5	5	1	5	3	0	2	16
J24	• @ #10/9 Rutgers [^]	36	2-8	2-5	4-4	0	2	2	1	3	2	0	1	10
J28	• South Florida [^]	45	6-13	3-7	10-13	0	4	4	1	4	3	0	1	25
J31	• @ Syracuse [^]	40	4-11	0-4	4-4	0	0	0	1	3	3	0	1	12
F4	• Providence [^]	29	4-10	1-5	3-4	1	7	8	0	6	1	0	2	12
F7	• Villanova [^]	45	5-12	3-8	2-2	0	6	6	2	5	2	0	3	15
F12	• @ #17/15 DePaul [^]	40	2-12	2-7	6-6	1	1	2	3	4	0	0	2	12
F19	• #8/6 Connecticut [^]	40	2-7	1-2	6-9	0	3	3	3	6	2	0	1	11
F22	• @ West Virginia [^]	34	7-12	5-9	3-4	1	3	4	3	2	4	0	4	22
F25	• @ Cincinnati [^]	43	4-8	1-2	8-8	0	4	4	2	3	3	0	0	17
F28	• Pittsburgh													

• = indicates BIG EAST Conference game // ^ = indicates game started // 1 = Duel in the Desert (Las Vegas, Nev.)

What They're Saying About Megan Duffy ...

- ◆ “Megan Duffy is one of the best I've ever seen. I absolutely love that kid, but hate to play against her.” — *Purdue head coach Kristy Curry*
- ◆ “Notre Dame has one of the best point guards in the country in Megan Duffy.” — *Wisconsin head coach Lisa Stone*
- ◆ “If you have a great point guard, you're going to have a great team. She's just a phenomenal point guard.” — *Indiana head coach Sharon Versyp*
- ◆ “She's really unbelievable. You can just tell, diving on the floor and never quitting. She's just special. That's the thing that takes a program to the next level.” — *St. John's head coach Kim Barnes Arico*
- ◆ “Megan is truly a quarterback on the floor. She has great instincts, and is as tough as tough can be. She is the ultimate team player, and really the type of player that you love to coach.” — *Kathy Delaney-Smith, 2005 USA World University Games Team/Harvard head coach*
- ◆ “What can you say about Megan? That's the best point guard in America right there.” — *Notre Dame head coach Muffet McGraw (after Duffy's near triple-double vs. #10 DePaul on Jan. 17)*
- ◆ “She's steadily improved throughout her career, and is clearly the best point guard in the country.” — *Clay Kallam, Full Court Press*
- ◆ “Megan Duffy is the blueprint of a point guard ... eyes that see 94/50, ball handling skills 94/50 and scoring ability from the arc, the lane or the free throw line. She plays with an inherent basketball IQ and a mental toughness that is tough to match. You will not out-work or out-think Duffy. She can run Notre Dame's team from the point guard position and she has the savvy to run an opponent's team as well.” — *Debbie Antonelli, CSTV/CBS women's basketball analyst*
- ◆ “Megan Duffy is the quintessential floor leader. With a terrific basketball IQ, she's got all of the tools to lead a team, controls the rhythm of a game, and ensures that the action around her is being played out according to her coach's game plan. She can hit a three, take a defender off the dribble for a leaner, and easily make better the play of her teammates with that heady leadership we speak of. Frankly, Duffy is one that you just want to have on your roster.” — *Stacey Dales-Schuman, ESPN women's basketball analyst/member of WNBA's Chicago Sky*

#21 Chandrica Smith

Forward • 6-1 • Fr.-HS • Stone Mountain, Ga. (Oak Hill Academy (Va.))

2005-06 Highlights

- ◆ Has appeared in 19 games this season, averaging 1.8 points and 1.8 rebounds per game.
- ◆ Made college debut at Indiana, playing three minutes (0-1 FG, one foul).
- ◆ Had first collegiate stats vs. Iona, finishing with three points, two rebounds and a steal.
- ◆ Made only field goal attempt (two points) in three minutes at #24/23 Purdue.
- ◆ Set (then) new season highs with four points (2-4 FG) and four rebounds in 18 minutes against Arkansas State.
- ◆ Matched (then) personal best with four points (2-3 FG) and added three rebounds in victory over Valparaiso.
- ◆ Again had four points (1-2, 2-2 FT), this time at St. John's in BIG EAST opener ... also registered her first career blocked shot in contest.
- ◆ Scored two points and tied (then) season high with four rebounds and two steals in a season-best 19 minutes at Louisville.
- ◆ Had breakout game at #10/9 Rutgers, finishing just shy of a double-double with season bests of nine points (3-7 FG) and 10 rebounds in 24 minutes.
- ◆ Turned in second consecutive solid outing, tallying six points, three rebounds and two steals in only 11 minutes (foul trouble) against South Florida.



Career Highs

Points

Career..... 9 at Rutgers (1/24/06)

Rebounds

Career..... 10 at Rutgers (1/24/06)

Assists

Career.... 1 vs. Arkansas St. (12/17/05)

Field Goals

Career..... 3 at Rutgers (1/24/06)

Field Goal Attempts

Career..... 7 at Rutgers (1/24/06)

Three-Point Field Goals

Career.....None

Three-Point Field Goal Attempts

Career.....None

Free Throws

Career..... 3 at Rutgers (1/24/06)

Free Throw Attempts

Career..... 5 at Rutgers (1/24/06)

Steals

Career.....2, twice (MR: vs. USF, 1/28/06)

Blocked Shots

Career..... 1, twice (MR: at Georgetown, 1/21/06)

Minutes Played

Career..... 24 at Rutgers (1/24/06)

Miscellaneous

Double-doubles..... 0/0
 Double-figure scoring games..... 0/0
 20-point games 0/0
 Double-figure rebound games 1/1
 5-assist games 0/0
 5-steal games..... 0/0
(noted in season/career format)

Smith's Career Statistics

Season	GP-GS	Min.-Avg.	FG-FGA	Pct.	3FG-3FGA	Pct.	FT-FTA	Pct.	Off	Def	Tot	Avg.	PF-DQ	A	T	B	S	Pts	Avg.
2005-06	19-0	137-7.2	13-32	.406	0-0	.000	8-13	.615	13	21	34	1.8	15-0	1	11	2	7	34	1.8
TOTALS	19-0	137-7.2	13-32	.406	0-0	.000	8-13	.615	13	21	34	1.8	15-0	1	11	2	7	34	1.8

2005-06 Game-By-Game Statistics — Chandrica Smith

Date	Opponent	Min	FG-FGA	3FG-FGA	FT-FTA	Off	Def	Tot	PF	A	TO	Blk	Stl	Pts
N18	Michigan		Did not play											
N20	@ Western Michigan		Did not play											
N23	@ Indiana	3	0-1	0-0	0-0	0	0	0	1	0	0	0	0	0
N27	#24/21 USC		Did not play											
N29	Iona	6	1-1	0-0	1-2	0	2	2	1	0	0	0	1	3
D4	@ Wisconsin		Did not play											
D7	@ #24/23 Purdue	3	1-1	0-0	0-0	0	0	0	0	0	1	0	0	2
D17	vs. Arkansas State ¹	18	2-4	0-0	0-2	2	2	4	3	1	3	0	0	4
D18	vs. #22/21 Utah ¹		Did not play											
D28	Valparaiso	13	2-3	0-0	0-0	1	2	3	0	0	2	0	0	4
D31	#1/1 Tennessee	0+	0-0	0-0	0-0	0	0	0	0	0	0	0	0	0
J4	• @ St. John's	5	1-2	0-0	2-2	1	0	1	1	0	0	1	0	4
J7	• Seton Hall	2	0-0	0-0	0-0	0	1	1	0	0	1	0	0	0
J10	• Marquette		Did not play											
J14	• @ Louisville	19	1-3	0-0	0-0	1	3	4	2	0	0	0	2	2
J17	• #10/10 DePaul	2	0-0	0-0	0-0	0	0	0	0	0	0	0	0	0
J21	• @ Georgetown	3	0-1	0-0	0-0	0	0	0	0	0	0	1	0	0
J24	• @ #10/9 Rutgers	24	3-7	0-0	3-5	3	7	10	2	0	0	0	1	9
J28	• South Florida	11	2-3	0-0	2-2	1	2	3	3	0	1	0	2	6
J31	• @ Syracuse	4	0-0	0-0	0-0	0	0	0	0	0	0	0	0	0
F4	• Providence	13	0-2	0-0	0-0	1	2	3	0	0	2	0	0	0
F7	• Villanova		Did not play											
F12	• @ #17/15 DePaul	5	0-2	0-0	0-0	2	0	2	0	0	0	0	0	0
F19	• #8/6 Connecticut	4	0-1	0-0	0-0	1	0	1	2	0	0	0	0	0
F22	• @ West Virginia	2	0-1	0-0	0-0	0	0	0	0	0	1	0	1	0
F25	• @ Cincinnati	0+	0-0	0-0	0-0	0	0	0	0	0	0	0	0	0
F28	• Pittsburgh		Did not play											

• = indicates BIG EAST Conference game // ^ = indicates game started
 1 = Duel in the Desert (Las Vegas, Nev.)

#24 Lindsay Schrader

Guard • 6-0 • Fr.-HS • Bartlett, Ill. (Bartlett HS)

2005-06 Awards

- ◆ BIG EAST Conference Freshman of the Week (Nov. 21)
- ◆ BIG EAST Weekly Honor Roll (Dec. 5)

2005-06 Highlights

- ◆ Started 23 games this season ... became first Notre Dame freshman to start season opener since Jacqueline Batteast and Teresa Borton vs. Valparaiso on Nov. 18, 2001.
- ◆ Tops on team in rebounding (5.5 rpg.), second in scoring (9.4 ppg.) and assists (1.81 apg.), and third in steals (1.12 spg.).
- ◆ Opened college career with a bang, posting double-double vs. Michigan with 10 points and 14 rebounds ... only second player in school history to register double-double in college debut (Shari Matvey - 21p, 14r vs. Marion on Nov. 30, 1979) ... 14 rebounds also most by Irish player since Batteast's 18 boards at Connecticut on Feb. 23, 2003.
- ◆ Tossed in 11 points and grabbed five rebounds at Western Michigan.
- ◆ Contributed seven points, four rebounds, three assists and two blocks at Indiana.
- ◆ Had eight points, four rebounds in victory over #24/21 USC.
- ◆ Logged 14 points (6-9 FG) in only 22 minutes vs. Iona.
- ◆ Had perfect shooting day at Wisconsin, going 6-of-6 from the floor (including her first three-pointer of the year) and winding up with 13 points ... shooting performance was one made shot away from tying school record for field goal percentage by a freshman.
- ◆ Collected team-high eight rebounds and season-best four assists vs. Arkansas State.
- ◆ Registered second double-double of season with 10 points and game-high 10 rebounds against No. 22/21 Utah in title game of Duel in the Desert (Gray Division).
- ◆ Had game highs of 13 points (6-10 FG) and seven rebounds, along with season-high three steals against Valparaiso.
- ◆ Tallied eight points (4-7 FG) in BIG EAST opener at St. John's.
- ◆ Scored seven points in 19 minutes against Seton Hall.
- ◆ Posted third double-digit rebounding game of season with 10 rebounds vs. Marquette; also matched season high with four assists.
- ◆ Notched nine points and five rebounds at Louisville.
- ◆ Came off the bench for first time this year vs. #10 DePaul, responding with near double-double (nine points, nine rebounds).
- ◆ Was back in lineup at Georgetown, collecting six points and five rebounds.
- ◆ Had eight points and five rebounds in reserve role at #10/9 Rutgers.
- ◆ Carded 12 points and season-high-tying three steals in 36 minutes against South Florida (first double-digit scoring game since Dec. 28 vs. Valparaiso).
- ◆ Rang up season-high 24 points (9-19 FG, 6-10 FG) and eight rebounds at Syracuse.
- ◆ Registered team bests of 16 points and six rebounds in personal-best 40 minutes vs. Villanova.
- ◆ Tallied team-high seven rebounds at #17/15 DePaul.
- ◆ Earned share of team-best scoring honors against #8/6 Connecticut with 12 points (5-7 FG).
- ◆ Logged nine points and five rebounds in victory at West Virginia.
- ◆ Compiled 11 points and four assists in overtime win at Cincinnati ... assisted on Tulyah Gaines' game-tying layup at end of regulation, then hit Courtney LaVere for go-ahead three-point play with 2:07 left in OT.
- ◆ Averaging 11.5 points over her last eight games (five in double figures).



Career Highs

Points

Career..... 24 at Syracuse (1/31/06)

Rebounds

Career..... 14 vs. Michigan (11/18/05)

Assists

Career..... 4, four times (MR: at Cin., 2/25/06)

Field Goals

Career..... 9 at Syracuse (1/31/06)

Field Goal Attempts

Career..... 19 at Syracuse (1/31/06)

Three-Point Field Goals

Career..... 1, three times (MR: at DePaul, 2/12/06)

Three-Point Field Goal Attempts

Career..... 2 at Rutgers (1/24/06)

Free Throws

Career..... 6 at Syracuse (1/31/06)

Free Throw Attempts

Career..... 10 at Syracuse (1/31/06)

Steals

Career..... 3, twice (MR: vs. USF, 1/28/06)

Blocked Shots

Career..... 2 at Indiana (11/23/05)

Minutes Played

Career..... 40 vs. Villanova (2/7/06)

Miscellaneous

Double-doubles..... 2/2
 Double-figure scoring games..... 11/11
 20-point games 1/1
 Double-figure rebound games 3/3
 5-assist games 0/0
 5-steal games..... 0/0
(noted in season/career format)

Schrader's Career Statistics

Season	GP-GS	Min.-Avg.	FG-FGA	Pct.	3FG-3FGA	Pct.	FT-FTA	Pct.	Off	Def	Tot	Avg.	PF-DQ	A	T	B	S	Pts	Avg.
2005-06	26-23	721-27.7	99-233	.425	3-6	.500	43-89	.483	29	113	142	5.5	46-1	47	52	7	28	244	9.4
TOTALS	26-23	721-27.7	99-233	.425	3-6	.500	43-89	.483	29	113	142	5.5	46-1	47	52	7	28	244	9.4

2005-06 Game-By-Game Statistics — Lindsay Schrader

Date	Opponent	Min	FG-FGA	3FG-FGA	FT-FTA	Off	Def	Tot	PF	A	TO	Blk	Stl	Pts
N18	Michigan^	33	4-9	0-0	2-6	3	11	14	3	2	1	0	1	10
N20	@ Western Michigan^	28	5-11	0-0	1-2	1	4	5	2	0	1	0	1	11
N23	@ Indiana^	33	3-7	0-0	1-4	0	4	4	1	3	1	2	0	7
N27	#24/21 USC^	27	3-7	0-0	2-7	0	4	4	1	2	8	0	1	8
N29	Iona^	22	6-9	0-0	2-3	0	3	3	5	2	3	0	2	14
D4	@ Wisconsin^	28	6-6	1-1	0-0	1	4	5	2	0	4	0	1	13
D7	@ #24/23 Purdue^	26	3-15	0-0	0-1	0	2	2	1	3	0	0	1	6
D17	vs. Arkansas State ¹ ^	26	3-8	0-0	0-0	3	5	8	2	4	2	0	0	6
D18	vs. #22/21 Utah ¹ ^	33	4-10	0-0	2-5	1	9	10	2	3	1	0	1	10
D28	Valparaiso^	30	6-10	0-0	1-2	2	5	7	0	2	1	0	3	13
D31	#1/1 Tennessee^	28	1-3	0-0	2-4	2	4	6	3	1	3	0	2	4
J4	• @ St. John's^	23	4-7	0-1	0-1	0	3	3	1	2	3	1	2	8
J7	• Seton Hall^	19	2-3	0-0	3-6	0	2	2	4	1	0	0	1	7
J10	• Marquette^	33	0-6	0-0	3-7	2	8	10	2	4	1	0	0	3
J14	• @ Louisville^	24	4-12	1-1	0-1	1	4	5	1	0	2	0	1	9
J17	• #10/10 DePaul	26	4-12	0-0	1-2	4	5	9	0	1	0	0	1	9
J21	• @ Georgetown^	18	3-7	0-0	0-0	1	4	5	2	2	3	0	2	6
J24	• @ #10/9 Rutgers	28	4-11	0-2	0-1	3	2	5	3	2	4	0	1	8
J28	• South Florida	36	5-11	0-0	2-2	0	4	4	2	0	0	1	3	12
J31	• @ Syracuse^	29	9-19	0-0	6-10	2	6	8	2	0	0	0	2	24
F4	• Providence^	18	0-4	0-0	2-4	1	0	1	1	4	2	1	0	2
F7	• Villanova^	40	6-13	0-0	4-7	1	5	6	1	2	5	1	0	16
F12	• @ #17/15 DePaul^	31	1-12	1-1	3-4	0	7	7	2	2	2	0	2	6
F19	• #8/6 Connecticut^	29	5-7	0-0	2-2	0	2	2	2	1	3	0	0	12
F22	• @ West Virginia^	25	3-6	0-0	3-6	1	4	5	0	0	1	1	0	9
F25	• @ Cincinnati^	28	5-8	0-0	1-2	0	2	2	1	4	1	0	0	11
F28	• Pittsburgh													

• = indicates BIG EAST Conference game // ^ = indicates game started
 1 = Duel in the Desert (Las Vegas, Nev.)

#32 Breona Gray

Guard • 5-9 • Jr.-2V • Las Vegas, Nev. (Bishop Gorman HS)

2005-06 Highlights

- ◆ Has started 18 games this season ... averaging 5.0 points and 2.3 rebounds per game.
- ◆ Had six points (4-4 FT) in season opener vs. Michigan.
- ◆ Added six points in victory at Western Michigan.
- ◆ Was key factor in win at Indiana, replacing injured Tulyah Gaines early in first half and going on to score 14 points (6-11 FG, 2-5 3FG) ... 10 of her markers came in first half.
- ◆ Made first start of the season vs. #24/21 USC, collecting career-high eight rebounds and matching personal standard with three steals.
- ◆ Had seven points at Wisconsin, including three-pointer that put Irish ahead to stay with 6:03 left, and had critical offensive rebound of missed FT with 21 seconds remaining.
- ◆ Enjoyed successful homecoming at Duel in the Desert in Las Vegas ... scored 12 points in opening-day win over Arkansas State ... came back with 11 points, including two early three-pointers, in Gray Division title game vs. #22/21 Utah.
- ◆ Scored five points and grabbed two rebounds at Louisville.
- ◆ Had first double-digit scoring game since Las Vegas trip with 10 points (4-9 FG, 2-3 3FG) in 31 minutes vs. #10 DePaul ... also hit three-pointer to ignite 20-1 second-half run.
- ◆ Tallied two points, four assists and two steals at Georgetown ... second theft came with 14.9 seconds left and ND leading by two.
- ◆ Back in the lineup at #10/9 Rutgers, finishing with eight points (3-4 FG, 2-3 3FG) ... second trey with 16:07 left in game capped 23-8 run that pulled Irish within four.
- ◆ Turned in solid shooting day vs. Providence with 10 points (3-5 FG, 2-3 3FG, 2-2 FT).
- ◆ Snared six rebounds (second-highest total of season) at #17/15 DePaul.
- ◆ Got back into double digits with 12 points (5-7 FG, 2-2 3FG) against #8/6 Connecticut.



Career Highs

Points

Career.....17 vs. Syracuse (1/5/05)

Rebounds

Career.....8 vs. USC (11/27/05)

Assists

Career.....5 vs. Purdue (1/16/05)

Field Goals

Career..6, three times (MR: vs. Ind., 11/23/05)

Field Goal Attempts

Career.....13 vs. Nebraska (11/14/04)

Three-Point Field Goals

Career...2, six times (MR: vs. UConn, 2/19/06)

Three-Point Field Goal Attempts

Career.....5 at Indiana (11/23/05)

Free Throws

Career...5, twice (MR: vs. West Va., 3/6/05)

Free Throw Attempts

Career.....7 vs. Syracuse (1/5/05)

Steals

Career.....3, four times (MR: vs. USC, 11/27/05)

Blocked Shots

Career.....2 at Wisconsin (12/4/05)

Minutes Played

Career..35, twice (MR: at Villanova, 1/9/05)

Miscellaneous

Double-doubles.....0/0
 Double-figure scoring games.....6/13
 20-point games0/0
 Double-figure rebound games0/0
 5-assist games0/1
 5-steal games.....0/0
(noted in season/career format)

Gray's Career Statistics

Season	GP-GS	Min.-Avg.	FG-FGA	Pct.	3FG-3FGA	Pct.	FT-FTA	Pct.	Off	Def	Tot	Avg	PF-DQ	A	T	B	S	Pts	Avg
2003-04	29-0	330-11.4	24-58	.414	0-10	.000	17-27	.630	13	32	45	1.6	25-0	8	25	2	13	65	2.2
2004-05	33-33	788-23.9	69-188	.367	2-6	.333	40-57	.702	35	75	110	3.3	31-0	54	54	2	41	180	5.5
2005-06	26-18	602-23.2	46-118	.390	19-53	.358	18-23	.783	20	40	60	2.3	33-0	30	36	3	23	129	5.0
TOTALS	88-51	1720-19.5	139-364	.382	21-69	.304	75-107	.701	68	147	215	2.4	89-0	92	115	7	77	374	4.3

2005-06 Game-By-Game Statistics — Breona Gray

Date	Opponent	Min	FG-FGA	3FG-FGA	FT-FTA	Off	Def	Tot	PF	A	TO	Blk	Stl	Pts
N18	Michigan	21	1-7	0-3	4-4	1	1	2	0	1	1	0	2	6
N20	@ Western Michigan	23	3-7	0-2	0-0	0	1	1	2	0	0	0	0	6
N23	@ Indiana	33	6-11	2-5	0-0	0	2	2	1	1	1	0	1	14
N27	#24/21 USC^	30	0-3	0-1	2-2	2	6	8	1	1	3	0	3	2
N29	Iona^	23	0-3	0-2	0-0	1	2	3	0	1	1	0	2	0
D4	@ Wisconsin^	24	3-5	1-3	0-0	2	1	3	3	0	3	2	0	7
D7	@ #24/23 Purdue^	16	0-2	0-0	0-0	0	0	0	1	2	2	0	0	0
D17	vs. Arkansas State ¹ ^	26	4-7	1-1	3-3	1	3	4	1	3	2	0	0	12
D18	vs. #22/21 Utah ¹ ^	25	3-6	2-4	3-4	1	1	2	3	1	2	0	1	11
D28	Valparaiso^	23	1-4	0-1	0-0	1	0	1	0	3	3	0	0	2
D31	#1/1 Tennessee^	15	0-1	0-0	0-0	0	2	2	1	0	1	0	0	0
J4	• @ St. John's^	16	1-4	1-3	0-0	1	1	2	2	1	2	0	1	3
J7	• Seton Hall	14	1-2	1-1	0-0	0	0	0	4	1	0	0	1	3
J10	• Marquette	23	1-4	0-2	0-0	1	2	3	0	0	0	0	0	2
J14	• @ Louisville	17	1-3	0-1	3-3	1	1	2	0	0	0	0	1	5
J17	• #10/10 DePaul	31	4-9	2-3	0-0	2	1	3	1	2	2	0	2	10
J21	• @ Georgetown	26	1-3	0-1	0-1	0	1	1	2	4	1	0	2	2
J24	• @ #10/9 Rutgers^	21	3-4	2-3	0-0	1	2	3	0	0	2	0	0	8
J28	• South Florida^	26	0-5	0-3	0-2	1	1	2	2	1	3	1	1	0
J31	• @ Syracuse^	13	1-3	0-0	0-0	0	1	1	0	1	0	0	2	2
F4	• Providence^	22	3-5	2-3	2-2	0	3	3	0	0	0	0	0	10
F7	• Villanova^	30	1-1	1-1	0-0	0	1	1	2	1	1	0	1	3
F12	• @ #17/15 DePaul^	25	0-4	0-3	1-2	4	2	6	2	0	0	0	1	1
F19	• #8/6 Connecticut^	31	5-7	2-2	0-0	0	2	2	1	2	1	0	2	12
F22	• @ West Virginia^	24	2-5	1-3	0-0	0	1	1	2	2	2	0	0	5
F25	• @ Cincinnati^	24	1-3	1-2	0-0	0	2	2	2	2	3	0	0	3
F28	• Pittsburgh													

• = indicates BIG EAST Conference game // ^ = indicates game started
 1 = Duel in the Desert (Las Vegas, Nev.)

#33 Melissa D'Amico

Center • 6-5 • So.-1V • Manorville, N.Y. (William Floyd HS)

2005-06 Awards

- ◆ Duel in the Desert (Gray Division) Most Valuable Player
- ◆ BIG EAST Conference Player of the Week (Dec. 19)

2005-06 Highlights

- ◆ Started 17 games this season, the first starting assignments of her career.
- ◆ Second on team and eighth in BIG EAST in blocked shots (1.23 bpg.) ... also second on squad in field goal percentage (.483) ... tied-fourth on team in rebounding (4.2 rpg.) and fifth in scoring (6.5 ppg.).
- ◆ Made first career start in season opener vs. Michigan, recording second-ever double-digit scoring night with 10 points and seven rebounds.
- ◆ Turned in first career double-double vs. #24/21 USC, logging 13 points (6-10 FG) and career-high 10 rebounds.
- ◆ Nearly had second consecutive double-double with 10 points and team-high eight rebounds against Iona.
- ◆ Had another solid outing at Wisconsin with 11 points (3-5 FG) and eight rebounds.
- ◆ Registered her best weekend as a collegian, earning Gray Division MVP honors at the Duel in the Desert after averaging 16.0 points and 6.5 rebounds with an .824 field goal percentage (14-of-17) as the Irish won the title.
- ◆ Dropped in career-high 20 points of 10-of-12 shooting in only 18 minutes of action against Arkansas State.
- ◆ Came back with team-high 13 points (4-5 FG) and seven rebounds vs. #22/21 Utah.
- ◆ Tallied 10 points (4-7 FG) against Valparaiso.
- ◆ Enjoyed strong performance in homecoming game at St. John's, finishing with team-high 14 points (7-10 FG) and six rebounds.
- ◆ Came off the bench for the first time this season at Louisville, contributing eight points (4-7 FG) and six rebounds in 20 minutes.
- ◆ Collected five points and career-high-tying 10 rebounds in win at Georgetown.
- ◆ Notched eight points (4-7 FG) in 20 minutes against Providence.
- ◆ Contributed five points and two blocks against #8/6 Connecticut.
- ◆ Chipped in with four points and four rebounds in 12 minutes at Cincinnati.



Career Highs

Points

Career... 20 vs. Arkansas St. (12/17/05)

Rebounds

Career..... 10, twice (MR: at Georgetown, 1/21/06)

Assists

Career..... 2, three times (MR: at WVU, 2/22/06)

Field Goals

Career.. 10 vs. Arkansas St. (12/17/05)

Field Goal Attempts

Career.. 12 vs. Arkansas St. (12/17/05)

Three-Point Field Goals

Career..... None

Three-Point Field Goal Attempts

Career..... None

Free Throws

Career..... 5, twice (MR: vs. Utah, 12/18/05)

Free Throw Attempts

Career..... 10 vs. Utah (12/18/05)

Steals

Career..... 2, twice (MR: vs. Ark. St., 12/17/05)

Blocked Shots

Career..... 3, twice (MR: at Indiana, 11/18/05)

Minutes Played

Career..... 32, twice (MR: vs. Ark. St., 12/17/05)

Miscellaneous

Double-doubles..... 1/1
 Double-figure scoring games..... 8/9
 20-point games..... 1/1
 Double-figure rebound games..... 2/2
 5-block games..... 0/0
(noted in season/career format)

D'Amico's Career Statistics

Season	GP-GS	Min.-Avg.	FG-FGA	Pct.	3FG-3FGA	Pct.	FT-FTA	Pct.	Off	Def	Tot	Avg	PF-DQ	A	T	B	S	Pts	Avg
2004-05	26-0	159-6.1	21-48	.438	0-0	.000	7-16	.438	15	22	37	1.4	34-0	4	14	12	3	49	1.9
2005-06	26-17	518-19.9	70-145	.483	0-0	.000	30-57	.526	37	71	108	4.2	55-0	12	44	32	12	170	6.5
TOTALS	52-17	677-13.0	91-193	.472	0-0	.000	37-73	.507	52	93	145	2.8	89-0	16	58	44	15	219	4.2

2005-06 Game-By-Game Statistics — Melissa D'Amico

Date	Opponent	Min	FG-FGA	3FG-FGA	FT-FTA	Off	Def	Tot	PF	A	TO	Blk	Stl	Pts
N18	Michigan^	25	4-9	0-0	2-4	2	5	7	3	0	1	1	0	10
N20	@ Western Michigan^	16	4-7	0-0	0-0	2	2	4	4	1	0	2	0	8
N23	@ Indiana^	9	0-1	0-0	1-2	0	1	1	4	0	1	3	0	1
N27	#24/21 USC^	32	6-10	0-0	1-3	3	7	10	2	0	2	1	0	13
N29	Iona^	27	4-10	0-0	2-3	4	4	8	2	0	2	1	1	10
D4	@ Wisconsin^	26	3-5	0-0	5-6	4	4	8	2	1	3	2	0	11
D7	@ #24/23 Purdue^	28	2-6	0-0	3-4	1	2	3	2	0	1	1	2	7
D17	vs. Arkansas State ¹ ^	18	10-12	0-0	0-0	2	4	6	4	0	0	2	2	20
D18	vs. #22/21 Utah ¹ ^	32	4-5	0-0	5-10	2	5	7	2	0	4	2	0	13
D28	Valparaiso^	22	4-7	0-0	2-3	1	3	4	3	0	4	0	0	10
D31	#1/1 Tennessee^	23	2-5	0-0	2-5	4	2	6	3	0	2	2	1	6
J4	• @ St. John's^	30	7-10	0-0	0-0	1	5	6	2	0	2	2	1	14
J7	• Seton Hall^	17	0-2	0-0	2-3	0	3	3	3	2	3	1	0	2
J10	• Marquette^	15	0-6	0-0	0-3	2	1	3	1	2	0	1	0	0
J14	• @ Louisville	20	4-7	0-0	0-0	3	3	6	1	0	1	0	1	8
J17	• #10/10 DePaul^	17	2-6	0-0	0-0	1	0	1	1	1	3	0	0	4
J21	• @ Georgetown^	27	2-8	0-0	1-2	3	7	10	3	1	4	2	0	5
J24	• @ #10/9 Rutgers	13	0-3	0-0	0-0	0	0	0	2	0	1	2	1	0
J28	• South Florida	15	1-4	0-0	0-0	0	0	0	1	0	2	1	0	2
J31	• @ Syracuse^	19	2-4	0-0	1-3	0	2	2	3	1	2	1	1	5
F4	• Providence	20	4-7	0-0	0-1	1	1	2	2	0	2	1	0	8
F7	• Villanova	7	1-2	0-0	0-1	0	1	1	0	0	0	0	1	2
F12	• @ #17/15 DePaul	14	0-2	0-0	0-0	0	2	2	0	0	0	1	0	0
F19	• #8/6 Connecticut	18	1-2	0-0	3-4	0	2	2	3	1	0	2	0	5
F22	• @ West Virginia	16	1-3	0-0	0-0	1	1	2	1	2	2	1	1	2
F25	• @ Cincinnati	12	2-2	0-0	0-0	0	4	4	1	0	2	0	0	4
F28	• Pittsburgh													

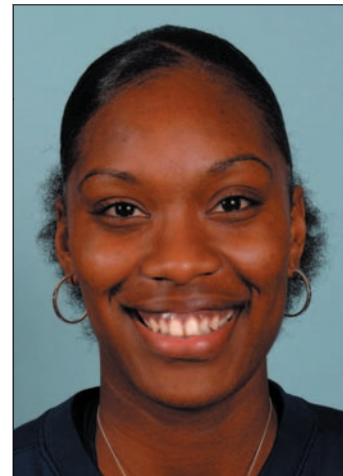
• = indicates BIG EAST Conference game // ^ = indicates game started
 1 = Duel in the Desert (Las Vegas, Nev.)

#34 Crystal Erwin

Forward • 6-2 • Jr.-2V • Rancho Cucamonga, Calif. (St. Paul HS)

2005-06 Highlights

- ◆ Started 19 games this season ... second on team in rebounding (5.2 rpg.).
- ◆ Had quality minutes in win at Western Michigan, finishing with seven points and five rebounds.
- ◆ Registered perfect shooting night at Indiana (3-3 FG, 3-3 FT), ending up with nine points and four rebounds despite picking up fourth foul with 13 minutes to play.
- ◆ Had seven rebounds in 20 minutes vs. #24/21 USC.
- ◆ Collected five points and three rebounds against Iona.
- ◆ Tallied seven points and career-high 11 rebounds at #24/23 Purdue.
- ◆ Posted first double-digit scoring performance of the season with 12 points (4-8 FG), along with seven rebounds in Duel in the Desert title game vs. #22/21 Utah.
- ◆ Turned in blue-collar effort vs. #1 Tennessee with team-high seven rebounds.
- ◆ Notched second career double-double in BIG EAST opener at St. John's, winding up with 11 points (5-7 FG) and a career-best 12 rebounds.
- ◆ Logged 11 points and six rebounds (five offensive) against Seton Hall.
- ◆ Snared eight rebounds in overtime win over Marquette.
- ◆ Carded seven points (3-4 FG) in 18 minutes at Louisville.
- ◆ Offered excellent production in win over #10 DePaul, registering 10 points (4-5 FG), six rebounds and career-high-tying four steals.
- ◆ Grabbed seven rebounds and hit two free throws with 41 seconds left in regulation that looked to be game-winners in eventual overtime loss vs. South Florida.
- ◆ Plucked eight rebounds in victory at Syracuse.
- ◆ Added six rebounds in 13 minutes against Providence.
- ◆ Registered five points and team-high seven rebounds against #8/6 Connecticut.
- ◆ Had perfect shooting night at West Virginia, scoring 10 points (4-4 FG, 2-2 FT).



Career Highs

Points

Career... 24 vs. Washington (12/11/04)

Rebounds

Career..... 12 at St. John's (1/4/06)

Assists

Career.... 3, three times (MR: vs. Prov., 2/4/06)

Field Goals

Career.....9, twice (MR: vs. Wash., 12/11/04)

Field Goal Attempts

Career.... 15 vs. Michigan State (12/2/04)

Three-Point Field Goals

Career.....None

Three-Point Field Goal Attempts

Career.... 1 vs. Arkansas St. (12/17/05)

Free Throws

Career..... 7 vs. Dayton (12/13/03)

Free Throw Attempts

Career....9, twice (MR: vs. St. John's, 1/26/05)

Steals

Career....4, twice (MR: vs. DePaul, 1/17/06)

Blocked Shots

Career..... 2 at Wisconsin (12/4/05)

Minutes Played

Career... 34 vs. Washington (12/11/04)

Miscellaneous

Double-doubles..... 1/2
 Double-figure scoring games..... 5/12
 20-point games 0/2
 Double-figure rebound games 2/3
 5-assist games 0/0
 5-steal games..... 0/0
(noted in season/career format)

Erwin's Career Statistics

Season	GP-GS	Min.-Avg.	FG-FGA	Pct.	3FG-3FGA	Pct.	FT-FTA	Pct.	Off	Def	Tot	Avg	PF-DQ	A	T	B	S	Pts	Avg
2003-04	32-0	353-11.0	42-94	.447	0-0	.000	22-42	.524	26	41	67	2.1	72-2	15	45	7	23	106	3.3
2004-05	33-17	579-17.5	67-162	.414	0-0	.000	40-71	.563	51	75	126	3.8	82-4	29	55	8	18	174	5.3
2005-06	26-19	535-20.6	46-116	.397	0-1	.000	37-60	.617	48	88	136	5.2	69-2	26	54	7	20	129	5.0
TOTALS	91-36	1467-16.1	155-372	.417	0-1	.000	99-173	.572	125	204	329	3.6	223-8	70	154	22	61	409	4.5

2005-06 Game-By-Game Statistics — Crystal Erwin

Date	Opponent	Min	FG-FGA	3FG-FGA	FT-FTA	Off	Def	Tot	PF	A	TO	Blk	Stl	Pts
N18	Michigan^	17	0-3	0-0	0-0	2	1	3	2	0	5	0	0	0
N20	@ Western Michigan^	28	2-9	0-0	3-4	1	4	5	2	2	2	1	1	7
N23	@ Indiana^	21	3-3	0-0	3-3	2	2	4	4	1	2	0	0	9
N27	#24/21 USC^	20	0-0	0-0	2-2	1	6	7	2	1	5	0	1	2
N29	Iona^	17	1-3	0-0	3-6	1	2	3	3	2	2	0	1	5
D4	@ Wisconsin^	22	1-3	0-0	2-2	0	3	3	3	2	1	2	0	4
D7	@ #24/23 Purdue^	26	3-5	0-0	1-2	6	5	11	4	1	0	0	2	7
D17	vs. Arkansas State ¹ ^	21	2-6	0-1	0-0	2	3	5	5	1	1	0	1	4
D18	vs. #22/21 Utah ¹ ^	21	4-8	0-0	4-6	3	4	7	2	0	1	0	0	12
D28	Valparaiso^	11	1-3	0-0	0-0	2	3	5	0	0	1	0	1	2
D31	#1/1 Tennessee^	28	1-4	0-0	2-6	1	6	7	4	1	2	0	0	4
J4	• @ St. John's^	31	5-7	0-0	1-3	3	9	12	2	2	7	1	0	11
J7	• Seton Hall^	26	5-11	0-0	1-7	5	1	6	4	0	2	0	0	11
J10	• Marquette^	26	1-6	0-0	0-0	5	3	8	5	0	3	1	1	2
J14	• @ Louisville^	18	3-4	0-0	1-1	1	1	2	3	1	0	0	1	7
J17	• #10/10 DePaul^	27	4-5	0-0	2-2	2	4	6	4	1	2	0	4	10
J21	• @ Georgetown^	18	2-6	0-0	2-2	0	2	2	1	0	3	0	0	6
J24	• @ #10/9 Rutgers^	15	0-2	0-0	1-2	0	4	4	3	1	2	1	0	1
J28	• South Florida^	17	0-5	0-0	3-4	3	4	7	2	2	3	1	0	3
J31	• @ Syracuse	21	0-3	0-0	3-4	2	6	8	2	2	1	0	2	3
F4	• Providence	13	0-3	0-0	0-0	1	5	6	3	3	1	0	2	0
F7	• Villanova	12	0-1	0-0	0-0	0	2	2	0	1	0	0	0	0
F12	• @ #17/15 DePaul	12	0-1	0-0	0-0	0	0	0	4	0	1	0	0	0
F19	• #8/6 Connecticut	26	2-7	0-0	1-2	3	4	7	2	0	5	0	0	5
F22	• @ West Virginia	25	4-4	0-0	2-2	1	2	3	1	2	0	0	2	10
F25	• @ Cincinnati	16	2-4	0-0	0-0	1	2	3	2	0	2	0	1	4
F28	• Pittsburgh													

• = indicates BIG EAST Conference game // ^ = indicates game started
 1 = Duel in the Desert (Las Vegas, Nev.)

#41 Courtney LaVere

Forward • 6-3 • Sr.-3V • Ventura, Calif. (Buena HS)

2005-06 Awards

- ◆ BIG EAST Conference Weekly Honor Roll (Feb. 6)

2005-06 Highlights

- ◆ Has started 10 times this year, including each of past nine games.
- ◆ Leads team in field goal percentage (.516) and blocked shots (1.46 bpg.; t-5th in BIG EAST), as well as third in scoring (8.6 ppg.) ... 1.80 bpg. in BIG EAST games (t-2nd).
- ◆ Notched first double-digit game of season with 10 points and five rebounds (four offensive) at Western Michigan.
- ◆ Had solid all-around effort at Indiana with six points (3-4 FG) and eight rebounds, including five critical boards in final seven minutes ... also logged 900th career point and 100th career block vs. the Hoosiers (eighth player in school history with 100 blocks).
- ◆ Sparked Irish past #24/21 USC with 16 points (7-11 FG) in 29 minutes ... made first five shots from the field.
- ◆ Added 10 points (5-8 FG) and five rebounds vs. Iona, connecting on her first four shots of the game.
- ◆ Went 5-of-7 from floor at #24/23 Purdue, finishing with 10 points.
- ◆ Logged 10 points, including career-best 2-of-3 three-pointers, against #1 Tennessee.
- ◆ Collected season-high three blocked shots along with eight points vs. Seton Hall.
- ◆ **Became 22nd 1,000-point scorer in school history** with her only basket at Louisville ... was also her first starting assignment of season.
- ◆ Came on in supporting role vs. #10 DePaul, carding nine points (4-5 FG) in 19 minutes.
- ◆ Had nine points (4-7 FG), four rebounds (including 500th board of her career) and season-high-tying three blocks in victory at Georgetown.
- ◆ Managed six points, seven rebounds and two blocks in overtime loss to South Florida.
- ◆ Contributed 14 points (7-10 FG), four rebounds and three blocks in win at Syracuse.
- ◆ Was nearly flawless from the field against Providence, scoring season-high 18 points on career-high 9-of-10 shooting in only 21 minutes.
- ◆ Registered 12 points (5-9 FG) and five rebounds in OT loss vs. Villanova.
- ◆ Collected 10 points and six rebounds at #17/15 DePaul.
- ◆ Had seven points and two blocks against #8/6 Connecticut.
- ◆ Rolled up 17 points, seven rebounds and four blocks in career-high 38 minutes at Cincinnati ... put Irish ahead for good on three-point play with 2:07 left in overtime.
- ◆ Averaging 10.0 points, 4.7 rebounds and 2.0 blocks with a .583 field goal percentage (42-of-72) since returning to the starting lineup nine games ago (Jan. 24 at Rutgers).

LaVere In The Notre Dame Career Record Books

- ◆ Sixth in blocked shots (134)
- ◆ Sixth in blocks per game (1.14)
- ◆ 18th in points (1,109)



Career Highs

Points

Career.....23, twice (MR: vs. Rutgers, 1/18/03)

Rebounds

Career.....13 vs. SMS (3/21/04)

Assists

Career.....6 vs. Valparaiso (12/28/05)

Field Goals

Career.....9, four times (MR: vs. Prov., 2/4/06)

Field Goal Attempts

Career.....16, three times (MR: vs. Wis., 12/4/03)

Three-Point Field Goals

Career.....2 vs. Tennessee (12/31/05)

Three-Point Field Goal Attempts

Career.....3 vs. Tennessee (12/31/05)

Free Throws

Career.....12 at Villanova (1/25/03)

Free Throw Attempts

Career.....16 at Villanova (1/25/03)

Steals

Career.....4 vs. USC (12/22/03)

Blocked Shots

Career.....5 at Marquette (12/31/02)

Minutes Played

Career.....38 at Cincinnati (2/25/06)

Miscellaneous

Double-doubles.....0/8
 Double-figure scoring games.....11/54
 20-point games0/6
 Double-figure rebound games0/8
 5-block games.....0/1
(noted in season/career format)

LaVere's Career Statistics

Season	GP-GS	Min.-Avg.	FG-FGA	Pct.	3FG-3FGA	Pct.	FT-FTA	Pct.	Off	Def	Tot	Avg	PF-DQ	A	T	B	S	Pts	Avg
2002-03	32-10	723-22.6	151-311	.486	1-3	.333	95-136	.699	81	99	180	5.6	88-5	21	80	27	19	398	12.4
2003-04	32-17	709-22.2	113-274	.412	3-10	.300	47-85	.553	61	84	145	4.5	87-1	30	75	41	36	276	8.6
2004-05	28-16	583-20.8	88-190	.463	1-6	.167	34-59	.576	34	76	110	3.9	61-2	37	57	28	26	211	7.5
2005-06	26-10	615-23.7	99-192	.516	2-6	.333	24-44	.545	50	60	110	4.2	66-1	34	27	38	20	224	8.6
TOTALS	118-53	2630-22.3	451-967	.466	7-25	.280	200-324	.617	226	319	545	4.6	302-9	122	239	134	101	1109	9.4

2005-06 Game-By-Game Statistics — Courtney LaVere

Date	Opponent	Min	FG-FGA	3FG-FGA	FT-FTA	Off	Def	Tot	PF	A	TO	Blk	Stl	Pts
N18	Michigan	15	2-7	0-0	0-0	4	3	7	2	0	3	0	0	4
N20	@ Western Michigan	24	4-13	0-0	2-2	4	1	5	3	0	2	2	1	10
N23	@ Indiana	30	3-4	0-0	0-0	2	6	8	3	1	3	2	2	6
N27	#24/21 USC	29	7-11	0-0	2-2	0	0	0	2	3	0	1	0	16
N29	Iona	28	5-8	0-0	0-1	3	2	5	1	3	1	0	1	10
D4	@ Wisconsin	20	3-7	0-0	0-0	2	2	4	2	3	0	0	1	6
D7	@ #24/23 Purdue	22	5-7	0-0	0-0	1	2	3	3	2	1	0	2	10
D17	vs. Arkansas State ¹	22	4-12	0-0	1-1	2	2	4	2	0	0	1	1	9
D18	vs. #22/21 Utah ¹	12	1-4	0-0	2-4	4	0	4	1	0	1	1	0	4
D28	Valparaiso	23	4-6	0-0	2-2	0	3	3	4	6	2	2	0	10
D31	#1/1 Tennessee	27	4-8	2-3	0-0	2	1	3	5	2	1	2	2	10
J4	• @ St. John's	10	1-2	0-0	0-0	1	2	3	1	0	0	0	0	2
J7	• Seton Hall	29	2-8	0-1	4-4	2	1	3	1	0	0	3	0	8
J10	• Marquette	28	3-4	0-0	3-6	3	4	7	2	2	2	1	2	9
J14	• @ Louisville [^]	20	1-7	0-0	0-0	1	1	2	2	0	0	2	0	2
J17	• #10/10 DePaul	19	4-5	0-0	1-4	0	3	3	3	2	3	0	1	9
J21	• @ Georgetown	31	4-7	0-0	1-2	1	3	4	3	2	1	3	2	9
J24	• @ #10/9 Rutgers [^]	23	1-5	0-0	0-0	2	2	4	2	0	0	1	0	2
J28	• South Florida [^]	28	2-3	0-0	2-5	1	6	7	4	1	1	2	0	6
J31	• @ Syracuse [^]	27	7-10	0-0	0-1	2	2	4	2	0	2	3	0	14
F4	• Providence [^]	21	9-10	0-0	0-0	1	2	3	3	2	0	2	0	18
F7	• Villanova [^]	26	5-9	0-0	2-4	4	1	5	3	0	1	0	1	12
F12	• @ #17/15 DePaul [^]	21	5-14	0-1	0-1	4	2	6	3	0	1	2	0	10
F19	• #8/6 Connecticut [^]	19	3-7	0-1	1-2	0	1	1	3	0	1	2	1	7
F22	• @ West Virginia [^]	23	2-3	0-0	0-0	1	4	5	4	3	1	2	2	4
F25	• @ Cincinnati [^]	38	8-11	0-0	1-3	3	4	7	2	2	0	4	1	17
F28	• Pittsburgh	42-72												

• = indicates BIG EAST Conference game // ^ = indicates game started
 1 = Duel in the Desert (Las Vegas, Nev.)